

IHC*easy* RAD50 Ready-To-Use IHC Kit

Catalog Number: **KHC2763**

General Information

Sample type:
FFPE tissue
Cited sample type:
Reactivity:
Human, Mouse, Rat
Cited Reactivity:

Assay type:
Immunohistochemistry
Primary antibody type:
Rabbit Recombinant
Secondary antibody type:
Polymer-HRP-Goat anti-Rabbit

Kit Component

Component	Size	Concentration
Antigen Retrieval Buffer	100 mL	50×
Washing Buffer	100 mL ×2	20×
Blocking Buffer	5 mL	RTU
Primary Antibody	5 mL	RTU
Secondary Antibody	5 mL	RTU
Chromogen Component A	0.2 mL	RTU
Chromogen Component B	4 mL	RTU
Signal Enhancer	5 mL	RTU
Counter Staining Reagent	5 mL	RTU
Mounting Media	5 mL	RTU
Control Slide	1 slide (Optional)	FFPE
Datasheet	1 Copy	
Manual	1 Copy	

Storage Instructions

All the reagents are stored at 2-8°C. The kit is stable for 6 months from the date of receipt.

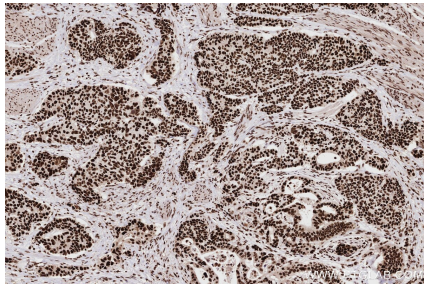
Background

RAD50 belongs to the ABC-ATPase protein family that concurs in forming the Nucleotide Binding Domain (NBD). ATP binding to Rad50 induces a conformational change that dramatically increases the Rad50 NBD affinity for itself, allowing for its dimerization. The Mre11-Rad50 (MR) complex has key functions in the detection, signaling and repair of DNA breaks.

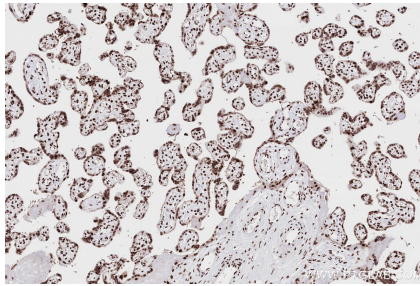
Synonyms

hRad50, RAD50 homolog (*S. cerevisiae*)

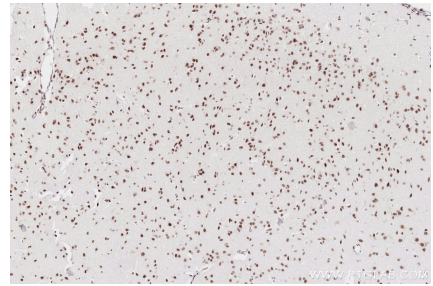
Selected Validation Data



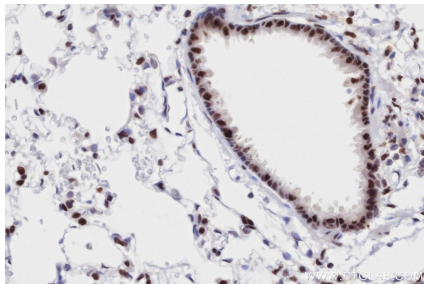
Immunohistochemical analysis of paraffin-embedded human stomach cancer tissue slide using KHC2763 (RAD50 IHC Kit).



Immunohistochemical analysis of paraffin-embedded human placenta tissue slide using KHC2763 (RAD50 IHC Kit).



Immunohistochemical analysis of paraffin-embedded mouse brain tissue slide using KHC2763 (RAD50 IHC Kit).



Immunohistochemical analysis of paraffin-embedded rat lung tissue slide using KHC2763 (RAD50 IHC Kit).