

# IHC*easy* RAB8 Ready-To-Use IHC Kit

Catalog Number: **KHC2766**

## General Information

Sample type:  
FFPE tissue  
Cited sample type:  
Reactivity:  
Human, Mouse, Rat  
Cited Reactivity:

Assay type:  
Immunohistochemistry  
Primary antibody type:  
Rabbit Polyclonal  
Secondary antibody type:  
Polymer-HRP-Goat anti-Rabbit

## Kit Component

Component	Size	Concentration
Antigen Retrieval Buffer	100 mL	50×
Washing Buffer	100 mL ×2	20×
Blocking Buffer	5 mL	RTU
Primary Antibody	5 mL	RTU
Secondary Antibody	5 mL	RTU
Chromogen Component A	0.2 mL	RTU
Chromogen Component B	4 mL	RTU
Signal Enhancer	5 mL	RTU
Counter Staining Reagent	5 mL	RTU
Mounting Media	5 mL	RTU
Control Slide	1 slide (Optional)	FFPE
Datasheet	1 Copy	
Manual	1 Copy	

## Storage Instructions

All the reagents are stored at 2-8°C. The kit is stable for 6 months from the date of receipt.

## Background

The Rab8 GTPase is a member of the Ras superfamily that functions in protein transport and membrane restructuring. RAB8 has two isoforms, RAB8A and RAB8B, that share 40% amino acid identity in the C-terminal variable region. RAB8 activity is regulated by specific guanine nucleotide exchange factors (GEFs), that mediate GTP loading, and GTPase activating proteins (GAPs) that convert them into the inactive GDP-bound form. RAB8 participates in recycling of the  $\alpha$ -amino-3-hydroxy-5-methyl-4-isoxazolepropionic acid (AMPA) receptors to the dendritic spine surface as well as in the intracellular transport of the metabotropic glutamate receptor type 1 in neuronal cells. Rab8 is activated at the base of the cilium by its guanine nucleotide exchanger Rabin8. Primary antibody in this kit recognizes both RAB8A and RAB8B.

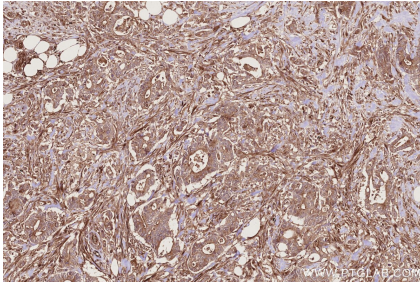
## Synonyms

RAB8B, Ras related protein Rab 8B, Ras-related protein Rab-8B

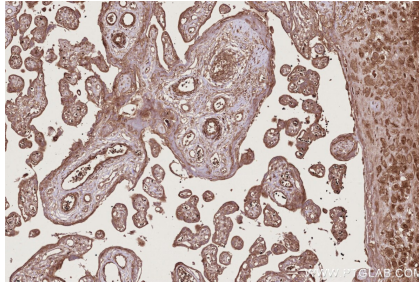
For technical support and original validation data for this product please contact:  
T: 1 (888) 4PTGLAB (1-888-478-4522) (toll free in USA), or 1(312) 455-8498 (outside USA)  
E: [proteintech@ptglab.com](mailto:proteintech@ptglab.com)  
W: [ptglab.com](http://ptglab.com)

This product is exclusively available under Proteintech Group brand and is not available to purchase from any other manufacturer.

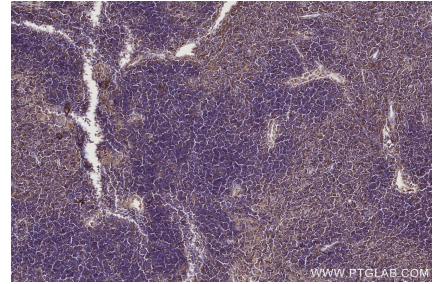
## Selected Validation Data



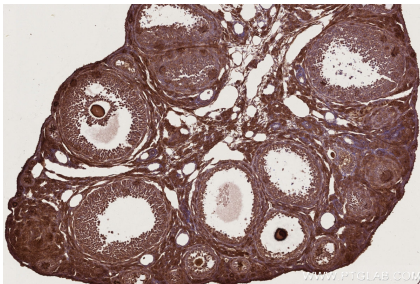
Immunohistochemical analysis of paraffin-embedded human rectal cancer tissue slide using KHC2766 (RAB8 IHC Kit).



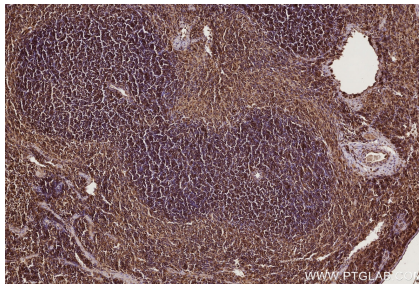
Immunohistochemical analysis of paraffin-embedded human placenta tissue slide using KHC2766 (RAB8 IHC Kit).



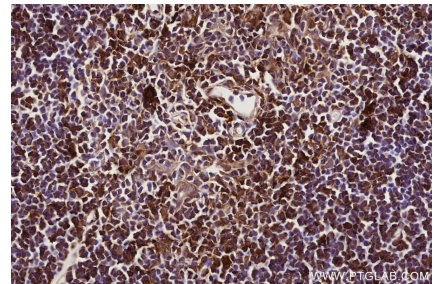
Immunohistochemical analysis of paraffin-embedded mouse thymus tissue slide using KHC2766 (RAB8 IHC Kit).



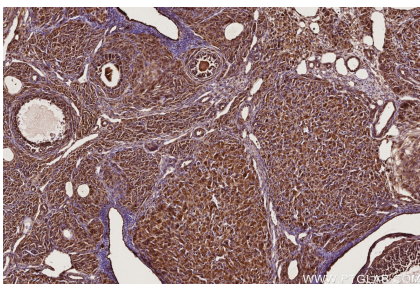
Immunohistochemical analysis of paraffin-embedded mouse ovary tissue slide using KHC2766 (RAB8 IHC Kit).



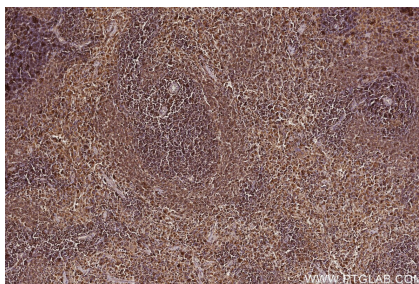
Immunohistochemical analysis of paraffin-embedded mouse spleen tissue slide using KHC2766 (RAB8 IHC Kit).



Immunohistochemical analysis of paraffin-embedded rat thymus tissue slide using KHC2766 (RAB8 IHC Kit).



Immunohistochemical analysis of paraffin-embedded rat ovary tissue slide using KHC2766 (RAB8 IHC Kit).



Immunohistochemical analysis of paraffin-embedded rat spleen tissue slide using KHC2766 (RAB8 IHC Kit).