

IHC*easy* PGT Ready-To-Use IHC Kit

Catalog Number: **KHC2768**

General Information

Sample type:
FFPE tissue
Cited sample type:
Reactivity:
Human, Mouse
Cited Reactivity:

Assay type:
Immunohistochemistry
Primary antibody type:
Rabbit Recombinant
Secondary antibody type:
Polymer-HRP-Goat anti-Rabbit

Kit Component

Component	Size	Concentration
Antigen Retrieval Buffer	100 mL	50×
Washing Buffer	100 mL ×2	20×
Blocking Buffer	5 mL	RTU
Primary Antibody	5 mL	RTU
Secondary Antibody	5 mL	RTU
Chromogen Component A	0.2 mL	RTU
Chromogen Component B	4 mL	RTU
Signal Enhancer	5 mL	RTU
Counter Staining Reagent	5 mL	RTU
Mounting Media	5 mL	RTU
Control Slide	1 slide (Optional)	FFPE
Datasheet	1 Copy	
Manual	1 Copy	

Storage Instructions

All the reagents are stored at 2-8°C. The kit is stable for 6 months from the date of receipt.

Background

Prostaglandin transporter (PGT), also known as SLC02A1, has been identified as a functional prostaglandin (PG) carrier that mediates either the release of newly-synthesized PGs by cells and/or the uptake of PGs prior to intracellular oxidation. Northern blot analysis revealed that PGT mRNA has broad tissue distribution, suggesting its role in the transport and/ or metabolic clearance of PG in diverse tissues.

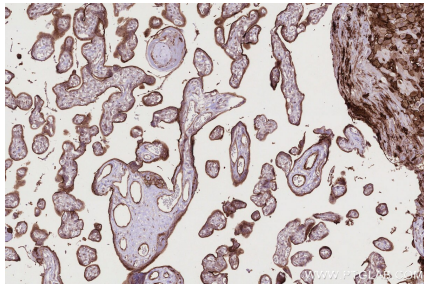
Synonyms

SLC02A1, OATP2A1, PHOAR2

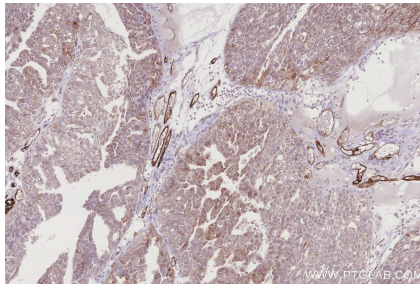
For technical support and original validation data for this product please contact:
T: 1 (888) 4PTGLAB (1-888-478-4522) (toll free in USA), or 1(312) 455-8498 (outside USA)
E: proteintech@ptglab.com
W: ptglab.com

This product is exclusively available under Proteintech Group brand and is not available to purchase from any other manufacturer.

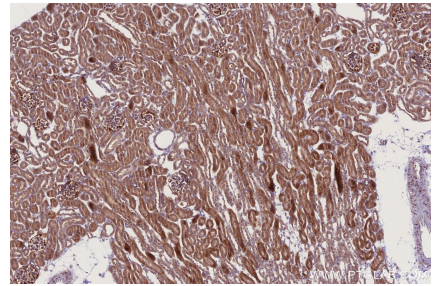
Selected Validation Data



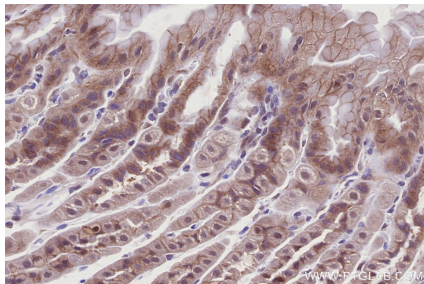
Immunohistochemical analysis of paraffin-embedded human placenta tissue slide using KHC2768 (PGT IHC Kit).



Immunohistochemical analysis of paraffin-embedded human ovary cancer tissue slide using KHC2768 (PGT IHC Kit).



Immunohistochemical analysis of paraffin-embedded mouse kidney tissue slide using KHC2768 (PGT IHC Kit).



Immunohistochemical analysis of paraffin-embedded mouse stomach tissue slide using KHC2768 (PGT IHC Kit).