

# IHC*easy* PHKB Ready-To-Use IHC Kit

Catalog Number: **KHC2772**

## General Information

Sample type:  
FFPE tissue  
Cited sample type:  
Reactivity:  
Human, Mouse  
Cited Reactivity:

Assay type:  
Immunohistochemistry  
Primary antibody type:  
Rabbit Polyclonal  
Secondary antibody type:  
Polymer-HRP-Goat anti-Rabbit

## Kit Component

Component	Size	Concentration
Antigen Retrieval Buffer	100 mL	50×
Washing Buffer	100 mL ×2	20×
Blocking Buffer	5 mL	RTU
Primary Antibody	5 mL	RTU
Secondary Antibody	5 mL	RTU
Chromogen Component A	0.2 mL	RTU
Chromogen Component B	4 mL	RTU
Signal Enhancer	5 mL	RTU
Counter Staining Reagent	5 mL	RTU
Mounting Media	5 mL	RTU
Control Slide	1 slide (Optional)	FFPE
Datasheet	1 Copy	
Manual	1 Copy	

## Storage Instructions

All the reagents are stored at 2-8°C. The kit is stable for 6 months from the date of receipt.

## Background

PHKB gene encodes phosphorylase kinase subunit beta involved in glycan biosynthesis and glycogen metabolism. PHKB activity is regulated by phosphorylation of various serine residues, and catalyzes the phosphorylation of serine in certain substrates, including troponin I. Phosphorylase kinase (PhK) complex, composed of alpha, beta, gamma, and delta subunits, stimulates energy production from glycogen in the cascade activation of glycogenolysis. Its large homologous alpha and beta subunits regulate the activity of the catalytic gamma subunit. Defects in PHKB are the cause of glycogen storage disease type 9B (GSD9B) also known as phosphorylase kinase deficiency of liver and muscle (PKD), characterized by hepatomegaly, only slightly elevated transaminases and plasma lipids, clinical improvement with increasing age, and remarkably no clinical muscle involvement.

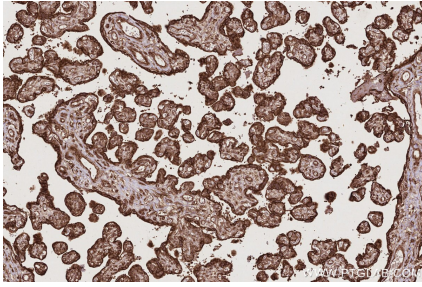
## Synonyms

Phosphorylase kinase subunit beta

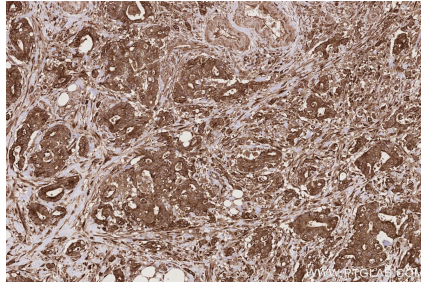
For technical support and original validation data for this product please contact:  
T: 1 (888) 4PTGLAB (1-888-478-4522) (toll free in USA), or 1(312) 455-8498 (outside USA)  
E: [proteintech@ptglab.com](mailto:proteintech@ptglab.com)  
W: [ptglab.com](http://ptglab.com)

This product is exclusively available under Proteintech Group brand and is not available to purchase from any other manufacturer.

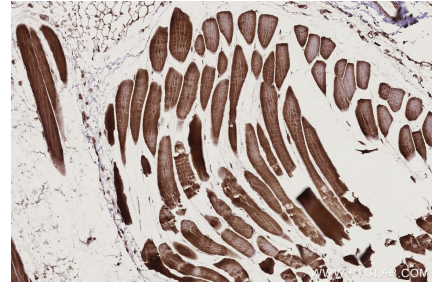
## Selected Validation Data



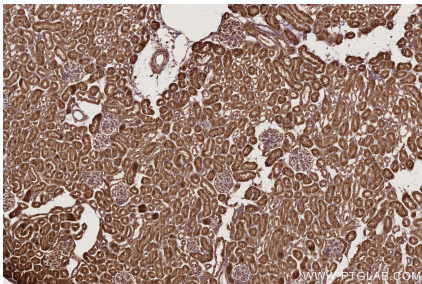
Immunohistochemical analysis of paraffin-embedded human placenta tissue slide using KHC2772 (PHKB IHC Kit).



Immunohistochemical analysis of paraffin-embedded human rectal cancer tissue slide using KHC2772 (PHKB IHC Kit).



Immunohistochemical analysis of paraffin-embedded mouse skeletal muscle tissue slide using KHC2772 (PHKB IHC Kit).



Immunohistochemical analysis of paraffin-embedded mouse kidney tissue slide using KHC2772 (PHKB IHC Kit).