

# IHCeasy<sup>®</sup> SKA1/C18orf24 Ready-To-Use IHC Kit

Catalog Number: **KHC2778**

## General Information

**Sample type:**  
FFPE tissue

**Cited sample type:**

**Reactivity:**  
Human, Mouse

**Cited Reactivity:**

**Assay type:**  
Immunohistochemistry

**Primary antibody type:**  
Rabbit Polyclonal

**Secondary antibody type:**  
Polymer-HRP-Goat anti-Rabbit

## Kit Component

Component	Size	Concentration
Antigen Retrieval Buffer	100 mL	50×
Washing Buffer	100 mL ×2	20×
Blocking Buffer	5 mL	RTU
Primary Antibody	5 mL	RTU
Secondary Antibody	5 mL	RTU
Chromogen Component A	0.2 mL	RTU
Chromogen Component B	4 mL	RTU
Signal Enhancer	5 mL	RTU
Counter Staining Reagent	5 mL	RTU
Mounting Media	5 mL	RTU
Control Slide	1 slide (Optional)	FFPE
Datasheet	1 Copy	
Manual	1 Copy	

## Storage Instructions

All the reagents are stored at 2-8°C. The kit is stable for 6 months from the date of receipt.

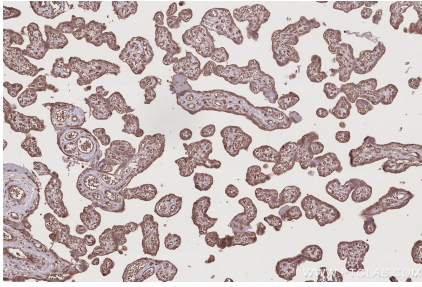
## Background

C18orf24 (Spindle and kinetochore-associated protein 1, SKA1) is involved in chromosome congression and mitosis. It is upregulated and oncogenic in several human cancers. In the human genome, SKA1, SKA2, and SKA3 constitute the SKA complex; this is necessary to maintain spindle microtubule attachment to kinetochores during mitosis.

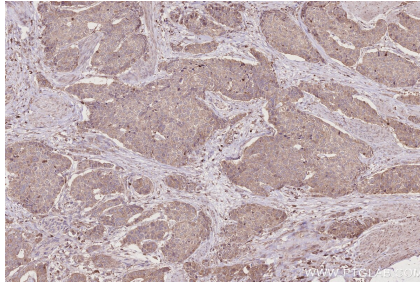
## Synonyms

C18orf24, SKA1, Spindle and kinetochore-associated protein 1

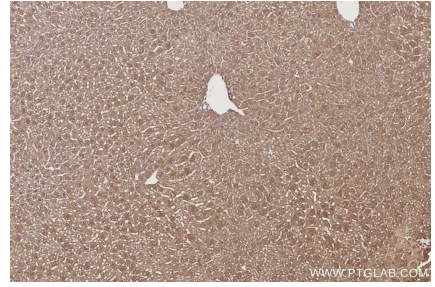
## Selected Validation Data



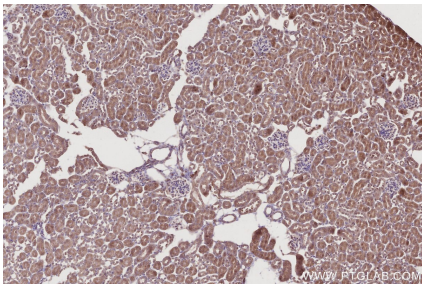
Immunohistochemical analysis of paraffin-embedded human placenta tissue slide using KHC2778 (SKA1/C18orf24 IHC Kit).



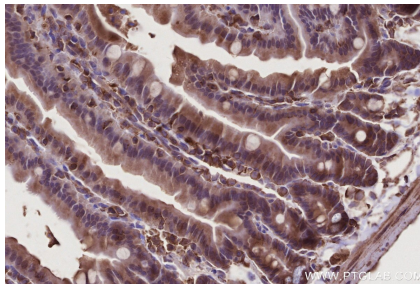
Immunohistochemical analysis of paraffin-embedded human stomach cancer tissue slide using KHC2778 (SKA1/C18orf24 IHC Kit).



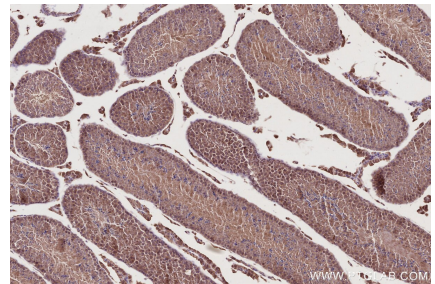
Immunohistochemical analysis of paraffin-embedded mouse liver tissue slide using KHC2778 (SKA1/C18orf24 IHC Kit).



Immunohistochemical analysis of paraffin-embedded mouse kidney tissue slide using KHC2778 (SKA1/C18orf24 IHC Kit).



Immunohistochemical analysis of paraffin-embedded mouse small intestine tissue slide using KHC2778 (SKA1/C18orf24 IHC Kit).



Immunohistochemical analysis of paraffin-embedded mouse testis tissue slide using KHC2778 (SKA1/C18orf24 IHC Kit).