

IHC*easy* ARL8A/ARL8B Ready-To-Use IHC Kit

Catalog Number: **KHC2779**

General Information

Sample type:
FFPE tissue
Cited sample type:
Reactivity:
Human, Mouse, Rat
Cited Reactivity:

Assay type:
Immunohistochemistry
Primary antibody type:
Mouse Monoclonal
Secondary antibody type:
Polymer-HRP-Goat anti-Mouse

Kit Component

Component	Size	Concentration
Antigen Retrieval Buffer	100 mL	50×
Washing Buffer	100 mL ×2	20×
Blocking Buffer	5 mL	RTU
Primary Antibody	5 mL	RTU
Secondary Antibody	5 mL	RTU
Chromogen Component A	0.2 mL	RTU
Chromogen Component B	4 mL	RTU
Signal Enhancer	5 mL	RTU
Counter Staining Reagent	5 mL	RTU
Mounting Media	5 mL	RTU
Control Slide	1 slide (Optional)	FFPE
Datasheet	1 Copy	
Manual	1 Copy	

Storage Instructions

All the reagents are stored at 2-8°C. The kit is stable for 6 months from the date of receipt.

Background

ARL8A (ADP-ribosylation factor-like protein 8A) is also named as ARL10B, GIE2 and belongs to the small GTPase superfamily. ARL8A is localized to lysosomes in mammalian cells. In neurons, ARL8A mediates the anterograde axonal long-range transport of presynaptic lysosome-related vesicles that are required for presynaptic biogenesis and synaptic function. ARL8A is upregulated in many cancers such as endometrial cancer, colorectal cancer and inflammatory breast cancer, and has been associated with poor survival outcomes. Primary antibody in this kit recognizes both ARL8A and ARL8B.

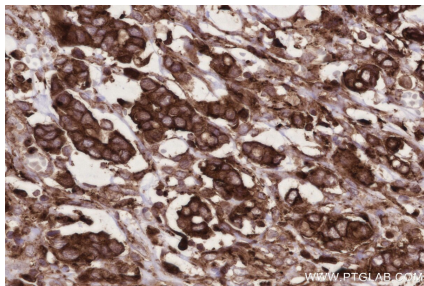
Synonyms

ARL8A, ADP-ribosylation factor-like protein 10B, ADP-ribosylation factor-like protein 8A, ARL10B, GIE2

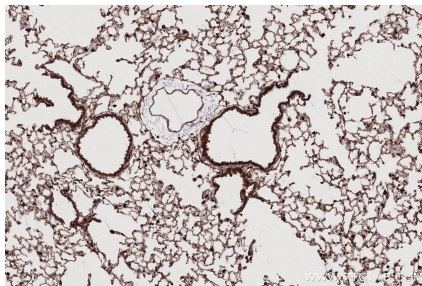
For technical support and original validation data for this product please contact:
T: 1 (888) 4PTGLAB (1-888-478-4522) (toll free in USA), or 1(312) 455-8498 (outside USA)
E: proteintech@ptglab.com
W: ptglab.com

This product is exclusively available under Proteintech Group brand and is not available to purchase from any other manufacturer.

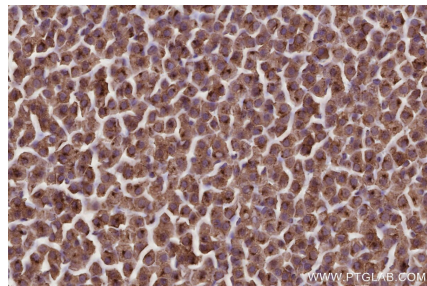
Selected Validation Data



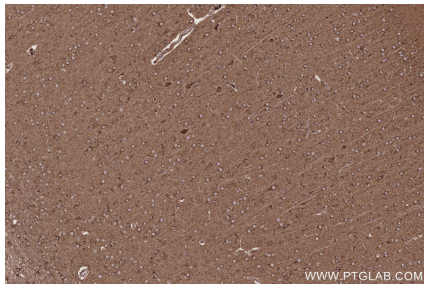
Immunohistochemical analysis of paraffin-embedded human stomach cancer tissue slide using KHC2779 (ARL8A/ARL8B IHC Kit).



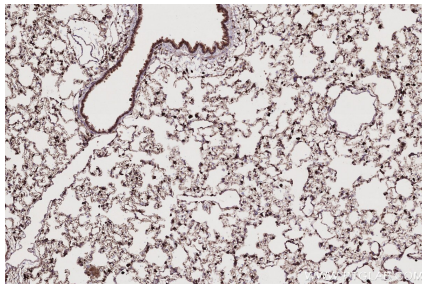
Immunohistochemical analysis of paraffin-embedded mouse lung tissue slide using KHC2779 (ARL8A/ARL8B IHC Kit).



Immunohistochemical analysis of paraffin-embedded rat adrenal gland tissue slide using KHC2779 (ARL8A/ARL8B IHC Kit).



Immunohistochemical analysis of paraffin-embedded rat brain tissue slide using KHC2779 (ARL8A/ARL8B IHC Kit).



Immunohistochemical analysis of paraffin-embedded rat lung tissue slide using KHC2779 (ARL8A/ARL8B IHC Kit).