

# IHC*easy* DOCK10 Ready-To-Use IHC Kit

Catalog Number: **KHC2780**

## General Information

Sample type:  
FFPE tissue  
Cited sample type:  
Reactivity:  
Human, Mouse, Rat  
Cited Reactivity:

Assay type:  
Immunohistochemistry  
Primary antibody type:  
Rabbit Polyclonal  
Secondary antibody type:  
Polymer-HRP-Goat anti-Rabbit

## Kit Component

Component	Size	Concentration
Antigen Retrieval Buffer	100 mL	50×
Washing Buffer	100 mL ×2	20×
Blocking Buffer	5 mL	RTU
Primary Antibody	5 mL	RTU
Secondary Antibody	5 mL	RTU
Chromogen Component A	0.2 mL	RTU
Chromogen Component B	4 mL	RTU
Signal Enhancer	5 mL	RTU
Counter Staining Reagent	5 mL	RTU
Mounting Media	5 mL	RTU
Control Slide	1 slide (Optional)	FFPE
Datasheet	1 Copy	
Manual	1 Copy	

## Storage Instructions

All the reagents are stored at 2-8°C. The kit is stable for 6 months from the date of receipt.

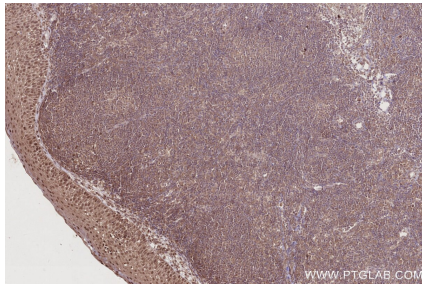
## Background

DOCK10 (Dedicator of Cytokinesis 10) is a protein-coding gene that belongs to the DOCK family of guanine nucleotide exchange factors (GEFs). It is involved in regulating the activity of Rho GTPases, particularly Rac1 and Cdc42, which play crucial roles in various cellular processes.

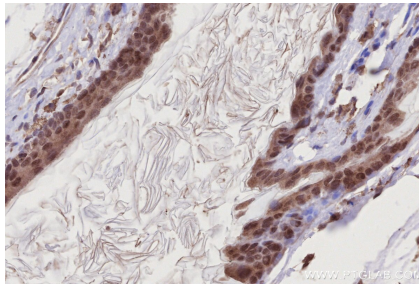
## Synonyms

dedicator of cytokinesis 10, DRIP2, Nbla10300, ZIZ3, Zizimin 3

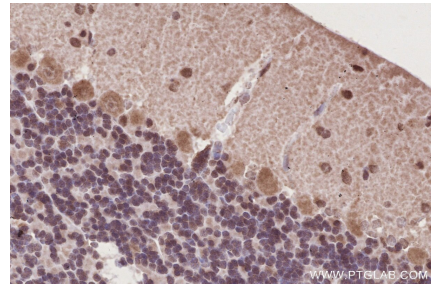
## Selected Validation Data



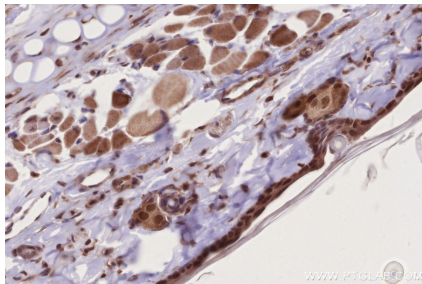
Immunohistochemical analysis of paraffin-embedded human tonsillitis tissue slide using KHC2780 (DOCK10 IHC Kit).



Immunohistochemical analysis of paraffin-embedded mouse skin tissue slide using KHC2780 (DOCK10 IHC Kit).



Immunohistochemical analysis of paraffin-embedded rat cerebellum tissue slide using KHC2780 (DOCK10 IHC Kit).



Immunohistochemical analysis of paraffin-embedded rat skin tissue slide using KHC2780 (DOCK10 IHC Kit).