

# IHCeasy<sup>®</sup> CCDC124 Ready-To-Use IHC Kit

Catalog Number: **KHC2784**

## General Information

Sample type:  
FFPE tissue  
Cited sample type:  
Reactivity:  
Human, Rat  
Cited Reactivity:

Assay type:  
Immunohistochemistry  
Primary antibody type:  
Rabbit Polyclonal  
Secondary antibody type:  
Polymer-HRP-Goat anti-Rabbit

## Kit Component

Component	Size	Concentration
Antigen Retrieval Buffer	100 mL	50×
Washing Buffer	100 mL ×2	20×
Blocking Buffer	5 mL	RTU
Primary Antibody	5 mL	RTU
Secondary Antibody	5 mL	RTU
Chromogen Component A	0.2 mL	RTU
Chromogen Component B	4 mL	RTU
Signal Enhancer	5 mL	RTU
Counter Staining Reagent	5 mL	RTU
Mounting Media	5 mL	RTU
Control Slide	1 slide (Optional)	FFPE
Datasheet	1 Copy	
Manual	1 Copy	

## Storage Instructions

All the reagents are stored at 2-8°C. The kit is stable for 6 months from the date of receipt.

## Background

CCDC124 is a novel centrosomal and midbody protein that is highly conserved among species. It is ubiquitously expressed with high expression in brain, placenta, liver, spleen, and prostate. At telophase, CCDC124 dissociates from centrosomes and relocalizes to the midzone, subsequently accumulating at the midbody at cytokinesis. It interacts with the Ras-guanine nucleotide exchange factor 1B (RasGEF1B) and is involved in cytokinesis.

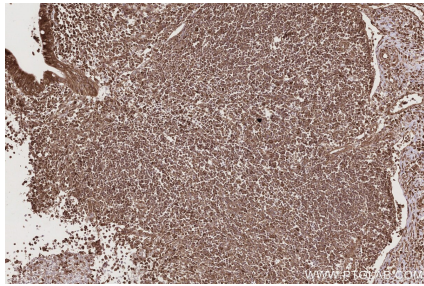
## Synonyms

coiled coil domain containing 124, Coiled-coil domain-containing protein 124

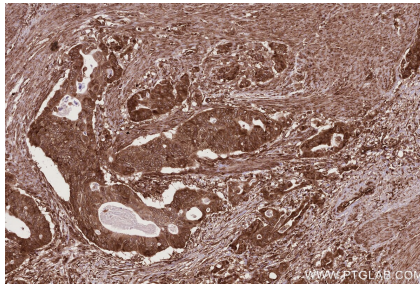
For technical support and original validation data for this product please contact:  
T: 1 (888) 4PTGLAB (1-888-478-4522) (toll free in USA), or 1(312) 455-8498 (outside USA)  
E: [proteintech@ptglab.com](mailto:proteintech@ptglab.com)  
W: [ptglab.com](http://ptglab.com)

This product is exclusively available under Proteintech Group brand and is not available to purchase from any other manufacturer.

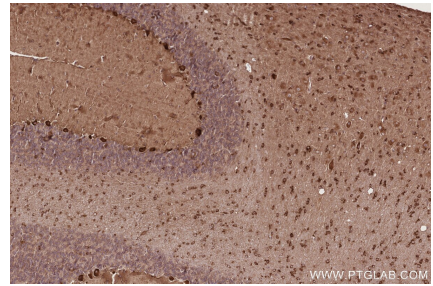
## Selected Validation Data



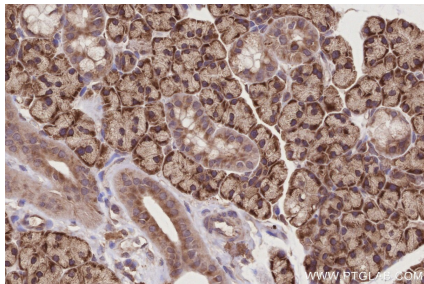
Immunohistochemical analysis of paraffin-embedded human appendicitis tissue slide using KHC2784 (CCDC124 IHC Kit).



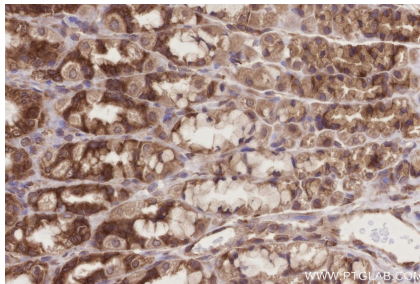
Immunohistochemical analysis of paraffin-embedded human stomach cancer tissue slide using KHC2784 (CCDC124 IHC Kit).



Immunohistochemical analysis of paraffin-embedded rat cerebellum tissue slide using KHC2784 (CCDC124 IHC Kit).



Immunohistochemical analysis of paraffin-embedded rat salivary gland tissue slide using KHC2784 (CCDC124 IHC Kit).



Immunohistochemical analysis of paraffin-embedded rat stomach tissue slide using KHC2784 (CCDC124 IHC Kit).