

# IHC*easy* SGSM3 Ready-To-Use IHC Kit

Catalog Number: **KHC2798**

## General Information

Sample type:  
FFPE tissue  
Cited sample type:  
Reactivity:  
Human, Mouse, Rat  
Cited Reactivity:

Assay type:  
Immunohistochemistry  
Primary antibody type:  
Rabbit Polyclonal  
Secondary antibody type:  
Polymer-HRP-Goat anti-Rabbit

## Kit Component

Component	Size	Concentration
Antigen Retrieval Buffer	100 mL	50×
Washing Buffer	100 mL ×2	20×
Blocking Buffer	5 mL	RTU
Primary Antibody	5 mL	RTU
Secondary Antibody	5 mL	RTU
Chromogen Component A	0.2 mL	RTU
Chromogen Component B	4 mL	RTU
Signal Enhancer	5 mL	RTU
Counter Staining Reagent	5 mL	RTU
Mounting Media	5 mL	RTU
Control Slide	1 slide (Optional)	FFPE
Datasheet	1 Copy	
Manual	1 Copy	

## Storage Instructions

All the reagents are stored at 2-8°C. The kit is stable for 6 months from the date of receipt.

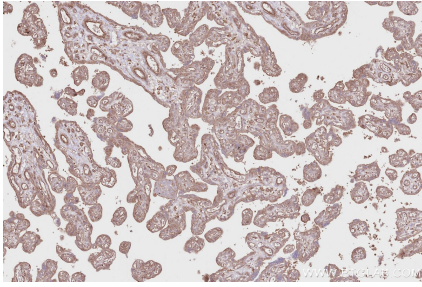
## Background

Small G protein signaling modulator 3 (SGSM3) is also named as MAP, RABGAPLP and RABGAPLP. SGSM3 is highly correlated with Cx43 in heart functions and that high levels of SGSM3 may induce Cx43 turnover through lysosomal degradation in infarcted rat hearts. SGSM3 has been shown to be associated with small G-protein-coupled receptor signaling. Several studies have shown that SGSM3 is associated with the risk of some cancers, including liver, breast, colorectal and bladder cancers.

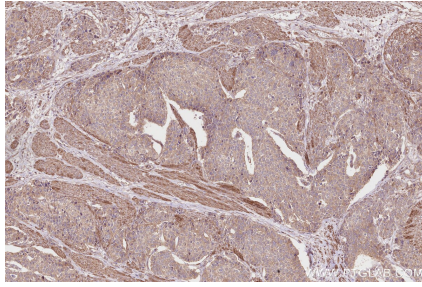
## Synonyms

MAP, Merlin associated protein, Merlin-associated protein, RabGAPLP, Rab-GTPase-activating protein-like protein

## Selected Validation Data



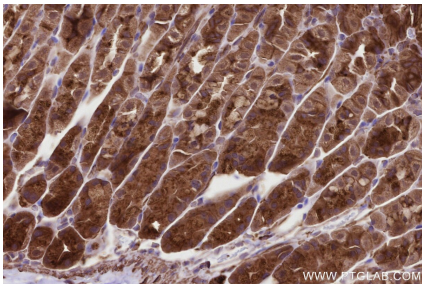
Immunohistochemical analysis of paraffin-embedded human placenta tissue slide using KHC2798 (SGSM3 IHC Kit).



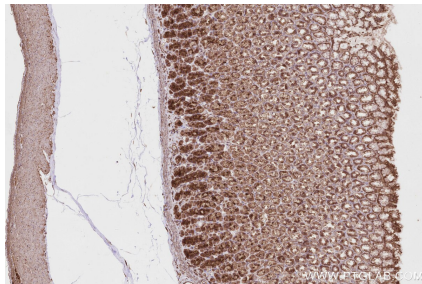
Immunohistochemical analysis of paraffin-embedded human stomach cancer tissue slide using KHC2798 (SGSM3 IHC Kit).



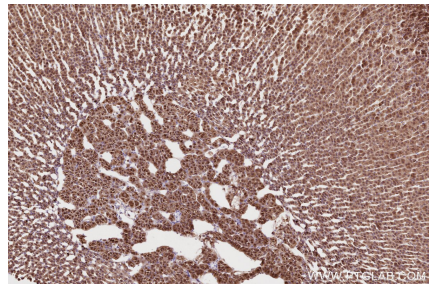
Immunohistochemical analysis of paraffin-embedded mouse colon tissue slide using KHC2798 (SGSM3 IHC Kit).



Immunohistochemical analysis of paraffin-embedded mouse stomach tissue slide using KHC2798 (SGSM3 IHC Kit).



Immunohistochemical analysis of paraffin-embedded rat stomach tissue slide using KHC2798 (SGSM3 IHC Kit).



Immunohistochemical analysis of paraffin-embedded rat adrenal gland tissue slide using KHC2798 (SGSM3 IHC Kit).