

# IHC*easy* PPP1R13B Ready-To-Use IHC Kit

Catalog Number: **KHC2805**

## General Information

Sample type:  
FFPE tissue  
Cited sample type:  
Reactivity:  
Human, Mouse, Rat  
Cited Reactivity:

Assay type:  
Immunohistochemistry  
Primary antibody type:  
Rabbit Polyclonal  
Secondary antibody type:  
Polymer-HRP-Goat anti-Rabbit

## Kit Component

Component	Size	Concentration
Antigen Retrieval Buffer	100 mL	50×
Washing Buffer	100 mL ×2	20×
Blocking Buffer	5 mL	RTU
Primary Antibody	5 mL	RTU
Secondary Antibody	5 mL	RTU
Chromogen Component A	0.2 mL	RTU
Chromogen Component B	4 mL	RTU
Signal Enhancer	5 mL	RTU
Counter Staining Reagent	5 mL	RTU
Mounting Media	5 mL	RTU
Control Slide	1 slide (Optional)	FFPE
Datasheet	1 Copy	
Manual	1 Copy	

## Storage Instructions

All the reagents are stored at 2-8°C. The kit is stable for 6 months from the date of receipt.

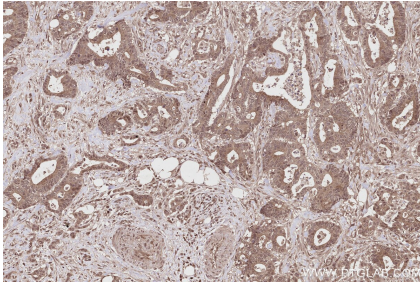
## Background

PPP1R13B (Protein phosphatase 1 regulatory subunit 13B), also named ASPP1 and KIAA0771, is a member of the apoptosis-stimulating proteins of the p53 family. PPP1R13B contains four ankyrin repeats and an SH3 domain involved in protein-protein interactions. PPP1R13 promotes DNA binding and transactivation of p53-family proteins on the promoters of proapoptotic genes. Expression of this gene is regulated by the E2F transcription factor.

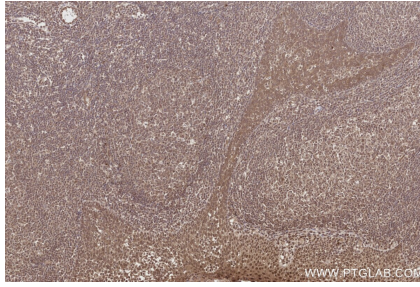
## Synonyms

ASPP1, Apoptosis-stimulating of p53 protein 1, KIAA0771, p53BP2 like, p85

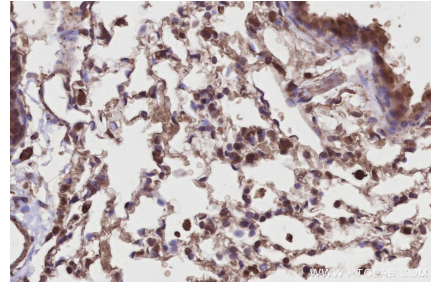
## Selected Validation Data



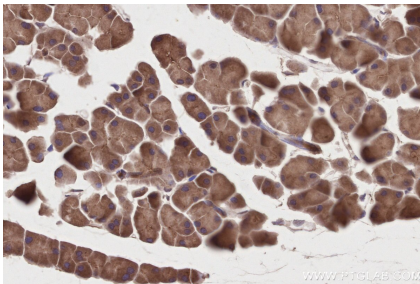
Immunohistochemical analysis of paraffin-embedded human rectal cancer tissue slide using KHC2805 (PPP1R13B IHC Kit).



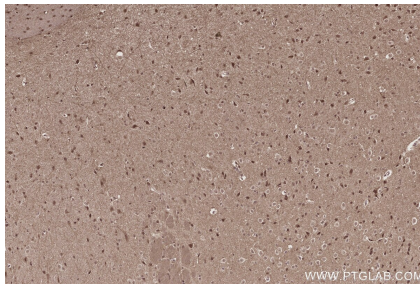
Immunohistochemical analysis of paraffin-embedded human tonsillitis tissue slide using KHC2805 (PPP1R13B IHC Kit).



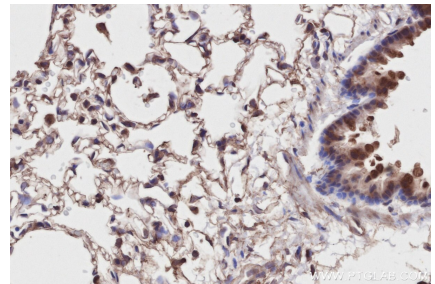
Immunohistochemical analysis of paraffin-embedded mouse lung tissue slide using KHC2805 (PPP1R13B IHC Kit).



Immunohistochemical analysis of paraffin-embedded mouse pancreas tissue slide using KHC2805 (PPP1R13B IHC Kit).



Immunohistochemical analysis of paraffin-embedded mouse brain tissue slide using KHC2805 (PPP1R13B IHC Kit).



Immunohistochemical analysis of paraffin-embedded rat lung tissue slide using KHC2805 (PPP1R13B IHC Kit).