

IHC*easy* DOCK7 Ready-To-Use IHC Kit

Catalog Number: **KHC2809**

General Information

Sample type:
FFPE tissue
Cited sample type:
Reactivity:
Human, Mouse, Rat
Cited Reactivity:

Assay type:
Immunohistochemistry
Primary antibody type:
Rabbit Polyclonal
Secondary antibody type:
Polymer-HRP-Goat anti-Rabbit

Kit Component

Component	Size	Concentration
Antigen Retrieval Buffer	100 mL	50×
Washing Buffer	100 mL ×2	20×
Blocking Buffer	5 mL	RTU
Primary Antibody	5 mL	RTU
Secondary Antibody	5 mL	RTU
Chromogen Component A	0.2 mL	RTU
Chromogen Component B	4 mL	RTU
Signal Enhancer	5 mL	RTU
Counter Staining Reagent	5 mL	RTU
Mounting Media	5 mL	RTU
Control Slide	1 slide (Optional)	FFPE
Datasheet	1 Copy	
Manual	1 Copy	

Storage Instructions

All the reagents are stored at 2-8°C. The kit is stable for 6 months from the date of receipt.

Background

DOCK 7 (dedicator of cytokinesis 7), also known as ZIR2, is a member of the DOCK180-related protein superfamily. Expressed mainly in neuronal cells, DOCK 7 is a guanine nucleotide exchange factor (GEF) for small GTPases, Rac1 and Cdc42, which are the major regulators of actin cytoskeleton.

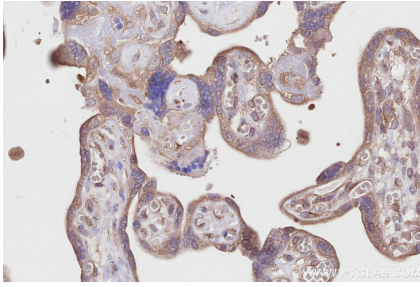
Synonyms

dedicator of cytokinesis 7, ZIR2

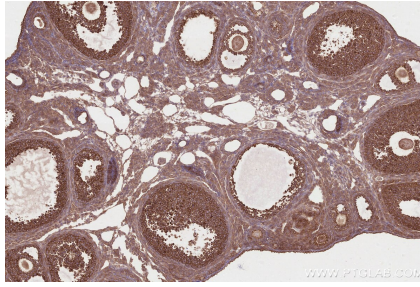
For technical support and original validation data for this product please contact:
T: 1 (888) 4PTGLAB (1-888-478-4522) (toll free in USA), or 1(312) 455-8498 (outside USA)
E: proteintech@ptglab.com
W: ptglab.com

This product is exclusively available under Proteintech Group brand and is not available to purchase from any other manufacturer.

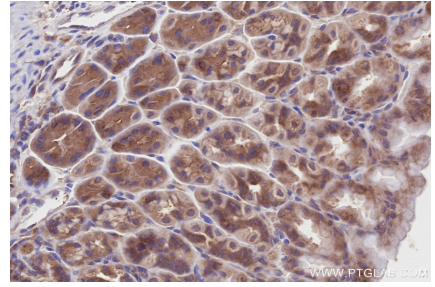
Selected Validation Data



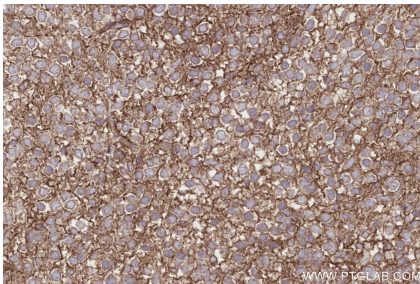
Immunohistochemical analysis of paraffin-embedded human placenta tissue slide using KHC2809 (DOCK7 IHC Kit).



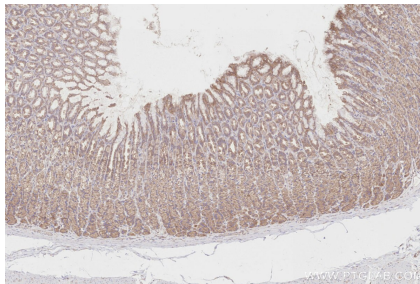
Immunohistochemical analysis of paraffin-embedded mouse ovary tissue slide using KHC2809 (DOCK7 IHC Kit).



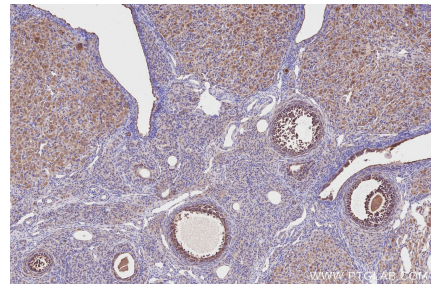
Immunohistochemical analysis of paraffin-embedded mouse stomach tissue slide using KHC2809 (DOCK7 IHC Kit).



Immunohistochemical analysis of paraffin-embedded mouse embryo tissue slide using KHC2809 (DOCK7 IHC Kit).



Immunohistochemical analysis of paraffin-embedded rat stomach tissue slide using KHC2809 (DOCK7 IHC Kit).



Immunohistochemical analysis of paraffin-embedded rat ovary tissue slide using KHC2809 (DOCK7 IHC Kit).