

IHC*easy* NEDD4L Ready-To-Use IHC Kit

Catalog Number: **KHC2815**

General Information

Sample type:
FFPE tissue
Cited sample type:
Reactivity:
Human, Mouse, Rat
Cited Reactivity:

Assay type:
Immunohistochemistry
Primary antibody type:
Rabbit Polyclonal
Secondary antibody type:
Polymer-HRP-Goat anti-Rabbit

Kit Component

Component	Size	Concentration
Antigen Retrieval Buffer	100 mL	50×
Washing Buffer	100 mL ×2	20×
Blocking Buffer	5 mL	RTU
Primary Antibody	5 mL	RTU
Secondary Antibody	5 mL	RTU
Chromogen Component A	0.2 mL	RTU
Chromogen Component B	4 mL	RTU
Signal Enhancer	5 mL	RTU
Counter Staining Reagent	5 mL	RTU
Mounting Media	5 mL	RTU
Control Slide	1 slide (Optional)	FFPE
Datasheet	1 Copy	
Manual	1 Copy	

Storage Instructions

All the reagents are stored at 2-8°C. The kit is stable for 6 months from the date of receipt.

Background

NEDD4L(E3 ubiquitin-protein ligase NEDD4-like) is also named as KIAA0439, NEDL3, Nedd4-2. It accepts ubiquitin from an E2 ubiquitin-conjugating enzyme in the form of a thioester and then directly transfers the ubiquitin to targeted substrates and is the principal ubiquitin ligase that selectively targets activated SMAD2 and SMAD3 for destruction. Nedd4L binds the PY motif of ENaC COOH terminals and catalyzes ubiquitination of the NH2 terminus of the protein for subsequent degradation. It has some isoforms produced by alternative splicing.

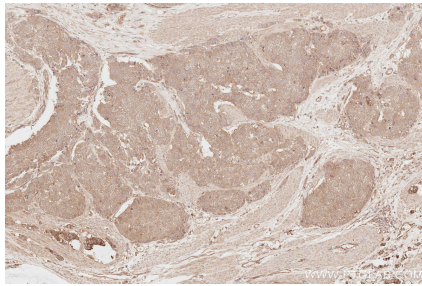
Synonyms

E3 ubiquitin-protein ligase NEDD4-like, EC:2.3.2.26, HECT-type E3 ubiquitin transferase NED4L, hNEDD4-2, KIAA0439

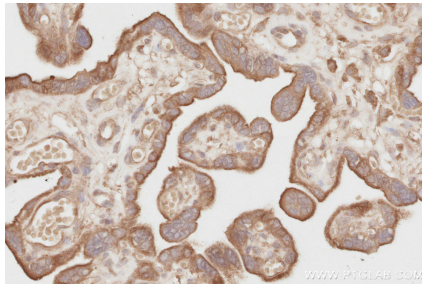
For technical support and original validation data for this product please contact:
T: 1 (888) 4PTGLAB (1-888-478-4522) (toll free in USA), or 1(312) 455-8498 (outside USA)
E: proteintech@ptglab.com
W: ptglab.com

This product is exclusively available under Proteintech Group brand and is not available to purchase from any other manufacturer.

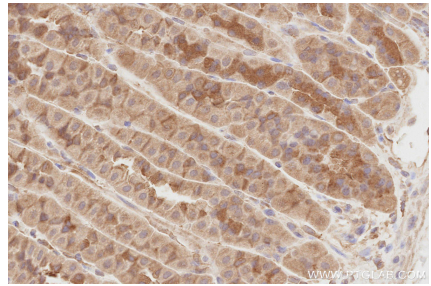
Selected Validation Data



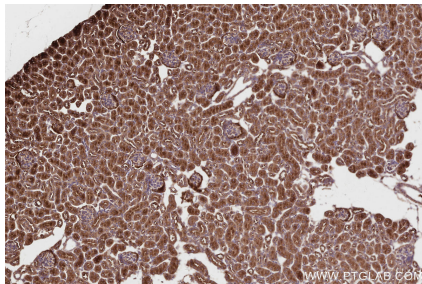
Immunohistochemical analysis of paraffin-embedded human stomach cancer tissue slide using KHC2815 (NEDD4L IHC Kit).



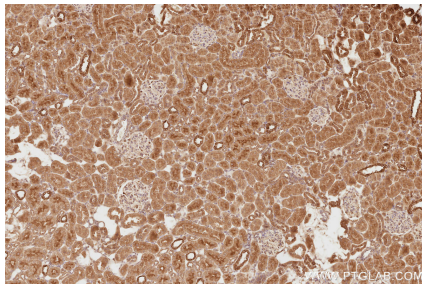
Immunohistochemical analysis of paraffin-embedded human placenta tissue slide using KHC2815 (NEDD4L IHC Kit).



Immunohistochemical analysis of paraffin-embedded mouse stomach tissue slide using KHC2815 (NEDD4L IHC Kit).



Immunohistochemical analysis of paraffin-embedded mouse kidney tissue slide using KHC2815 (NEDD4L IHC Kit).



Immunohistochemical analysis of paraffin-embedded rat kidney tissue slide using KHC2815 (NEDD4L IHC Kit).