

# IHC*easy* SPAG5 Ready-To-Use IHC Kit

Catalog Number: **KHC2824**

## General Information

Sample type:  
FFPE tissue  
Cited sample type:  
Reactivity:  
Human, Mouse  
Cited Reactivity:

Assay type:  
Immunohistochemistry  
Primary antibody type:  
Rabbit Polyclonal  
Secondary antibody type:  
Polymer-HRP-Goat anti-Rabbit

## Kit Component

Component	Size	Concentration
Antigen Retrieval Buffer	100 mL	50×
Washing Buffer	100 mL ×2	20×
Blocking Buffer	5 mL	RTU
Primary Antibody	5 mL	RTU
Secondary Antibody	5 mL	RTU
Chromogen Component A	0.2 mL	RTU
Chromogen Component B	4 mL	RTU
Signal Enhancer	5 mL	RTU
Counter Staining Reagent	5 mL	RTU
Mounting Media	5 mL	RTU
Control Slide	1 slide (Optional)	FFPE
Datasheet	1 Copy	
Manual	1 Copy	

## Storage Instructions

All the reagents are stored at 2-8°C. The kit is stable for 6 months from the date of receipt.

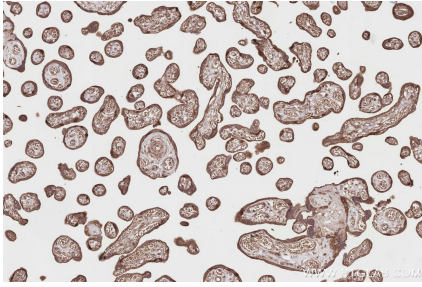
## Background

SPAG5, also named as MAP126, Astrin and Deepest, is necessary for normal spindle formation during mitosis. It is highly expressed in testis. SPAG5 has different localization in somatic versus male germ cells suggesting the possibility of different function.

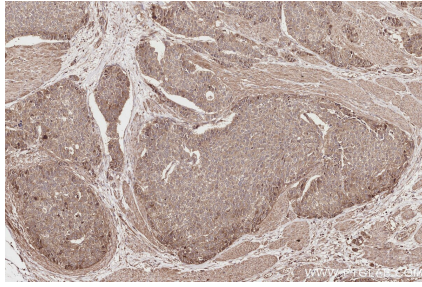
## Synonyms

Astrin, Deepest, hMAP126, MAP126, Mitotic spindle-associated protein p126

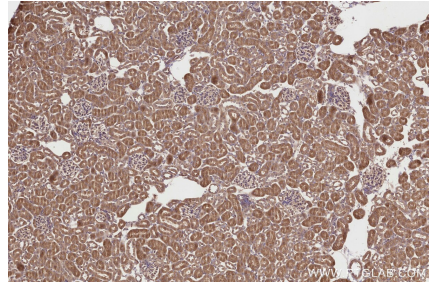
## Selected Validation Data



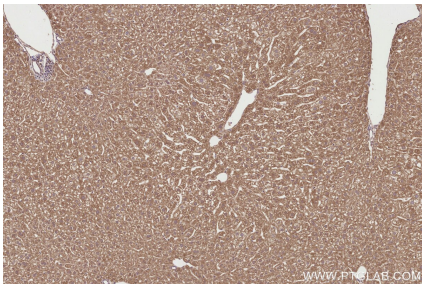
Immunohistochemical analysis of paraffin-embedded human placenta tissue slide using KHC2824 (SPAG5 IHC Kit).



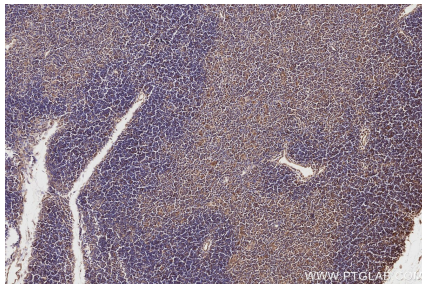
Immunohistochemical analysis of paraffin-embedded human stomach cancer tissue slide using KHC2824 (SPAG5 IHC Kit).



Immunohistochemical analysis of paraffin-embedded mouse kidney tissue slide using KHC2824 (SPAG5 IHC Kit).



Immunohistochemical analysis of paraffin-embedded mouse liver tissue slide using KHC2824 (SPAG5 IHC Kit).



Immunohistochemical analysis of paraffin-embedded mouse thymus tissue slide using KHC2824 (SPAG5 IHC Kit).