

# IHC*easy* VRK1 Ready-To-Use IHC Kit

Catalog Number: **KHC2852**

## General Information

Sample type:  
FFPE tissue  
Cited sample type:  
Reactivity:  
Human  
Cited Reactivity:

Assay type:  
Immunohistochemistry  
Primary antibody type:  
Rabbit Polyclonal  
Secondary antibody type:  
Polymer-HRP-Goat anti-Rabbit

## Kit Component

Component	Size	Concentration
Antigen Retrieval Buffer	100 mL	50×
Washing Buffer	100 mL ×2	20×
Blocking Buffer	5 mL	RTU
Primary Antibody	5 mL	RTU
Secondary Antibody	5 mL	RTU
Chromogen Component A	0.2 mL	RTU
Chromogen Component B	4 mL	RTU
Signal Enhancer	5 mL	RTU
Counter Staining Reagent	5 mL	RTU
Mounting Media	5 mL	RTU
Control Slide	1 slide (Optional)	FFPE
Datasheet	1 Copy	
Manual	1 Copy	

## Storage Instructions

All the reagents are stored at 2-8°C. The kit is stable for 6 months from the date of receipt.

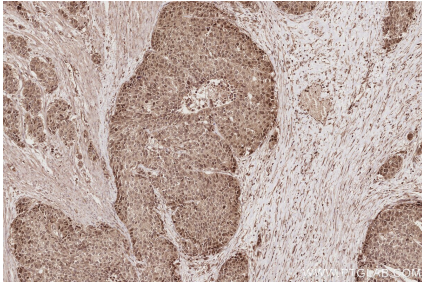
## Background

Vaccinia-related kinase 1 (VRK1) is a members of the vaccinia-related kinase (VRK) family of serine/threonine kinases and are principally localized in the nucleus. VRK1 was initially described as a kinase with homology to B1R, a vaccinia virus kinase required for viral DNA replication and the early phase of infection. It has been suggested that VRK1 was overexpressed in numerous human tumors, such as lung carcinomas, hepatocellular carcinoma, breast carcinomas, head and neck squamous cell carcinoma.

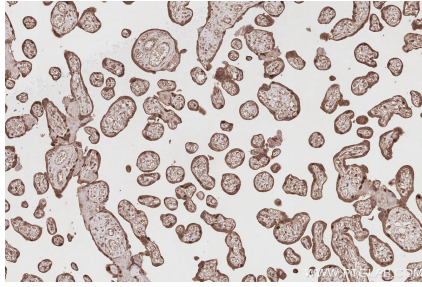
## Synonyms

EC:2.7.11.1, Serine/threonine-protein kinase VRK1, Vaccinia-related kinase 1

## Selected Validation Data



Immunohistochemical analysis of paraffin-embedded human stomach cancer tissue slide using KHC2852 (VRK1 IHC Kit).



Immunohistochemical analysis of paraffin-embedded human placenta tissue slide using KHC2852 (VRK1 IHC Kit).