

IHC*easy* OBFC2B Ready-To-Use IHC Kit

Catalog Number: **KHC2853**

General Information

Sample type:
FFPE tissue
Cited sample type:
Reactivity:
Human, Mouse, Rat
Cited Reactivity:

Assay type:
Immunohistochemistry
Primary antibody type:
Rabbit Polyclonal
Secondary antibody type:
Polymer-HRP-Goat anti-Rabbit

Kit Component

Component	Size	Concentration
Antigen Retrieval Buffer	100 mL	50×
Washing Buffer	100 mL ×2	20×
Blocking Buffer	5 mL	RTU
Primary Antibody	5 mL	RTU
Secondary Antibody	5 mL	RTU
Chromogen Component A	0.2 mL	RTU
Chromogen Component B	4 mL	RTU
Signal Enhancer	5 mL	RTU
Counter Staining Reagent	5 mL	RTU
Mounting Media	5 mL	RTU
Control Slide	1 slide (Optional)	FFPE
Datasheet	1 Copy	
Manual	1 Copy	

Storage Instructions

All the reagents are stored at 2-8°C. The kit is stable for 6 months from the date of receipt.

Background

OBFC2B, also named as NABP2 or SSB1, is a 211 amino acid protein, which belongs to the SOSS-B family. OBFC2B localizes to nuclear foci following DNA damage. OBFC2B is a component of the SOSS complex, a multiprotein complex that functions downstream of the MRN complex to promote DNA repair and G2/M checkpoint. In the SOSS complex, OBFC2B acts as a sensor of single-stranded DNA that binds to single-stranded DNA, in particular to polypyrimidines.

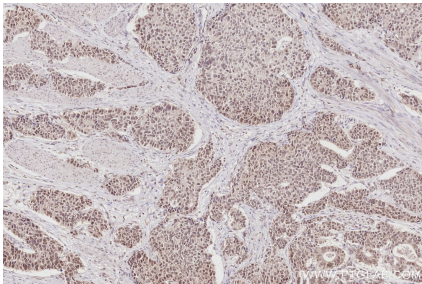
Synonyms

hSSB1, LP3587, NABP2, Nucleic acid-binding protein 2, Oligonucleotide/oligosaccharide-binding fold-containing protein 2B

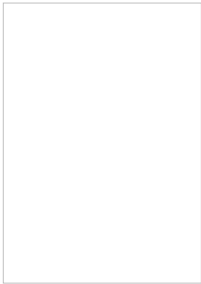
For technical support and original validation data for this product please contact:
T: 1 (888) 4PTGLAB (1-888-478-4522) (toll free in USA), or 1(312) 455-8498 (outside USA)
E: proteintech@ptglab.com
W: ptglab.com

This product is exclusively available under Proteintech Group brand and is not available to purchase from any other manufacturer.

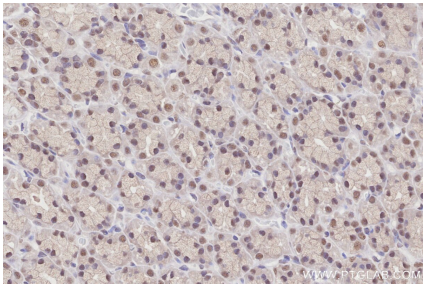
Selected Validation Data



Immunohistochemical analysis of paraffin-embedded human stomach cancer tissue slide using KHC2853 (OBFC2B IHC Kit).



Immunohistochemical analysis of paraffin-embedded mouse stomach tissue slide using KHC2853 (OBFC2B IHC Kit).



Immunohistochemical analysis of paraffin-embedded rat stomach tissue slide using KHC2853 (OBFC2B IHC Kit).