

IHC*easy* EIF2AK1 Ready-To-Use IHC Kit

Catalog Number: **KHC2855**

General Information

Sample type:
FFPE tissue
Cited sample type:
Reactivity:
Human, Mouse, Rat
Cited Reactivity:

Assay type:
Immunohistochemistry
Primary antibody type:
Mouse Monoclonal
Secondary antibody type:
Polymer-HRP-Goat anti-Mouse

Kit Component

Component	Size	Concentration
Antigen Retrieval Buffer	100 mL	50×
Washing Buffer	100 mL ×2	20×
Blocking Buffer	5 mL	RTU
Primary Antibody	5 mL	RTU
Secondary Antibody	5 mL	RTU
Chromogen Component A	0.2 mL	RTU
Chromogen Component B	4 mL	RTU
Signal Enhancer	5 mL	RTU
Counter Staining Reagent	5 mL	RTU
Mounting Media	5 mL	RTU
Control Slide	1 slide (Optional)	FFPE
Datasheet	1 Copy	
Manual	1 Copy	

Storage Instructions

All the reagents are stored at 2-8°C. The kit is stable for 6 months from the date of receipt.

Background

Eukaryotic initiation factor 2a (eIF2a), which is a critical component in the formation of the translation initiation ternary complex (eIF2a/GTP/methionyl transfer RNA), plays a key role in the ER stress response. EIF2AK1, which is activated by heme deficiency and other stimuli, is a major kinase that phosphorylates EIF2-alpha. Phosphorylation of the alpha subunit of EIF2 downregulates protein synthesis in response to various stress conditions.

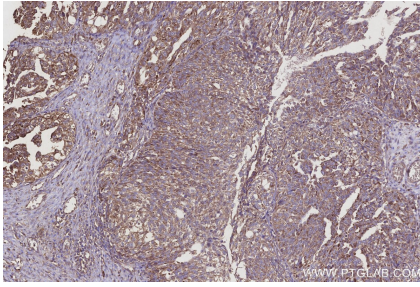
Synonyms

EC:2.7.11.1, Eukaryotic translation initiation factor 2-alpha kinase 1, HCR, Heme controlled repressor, Heme regulated inhibitor

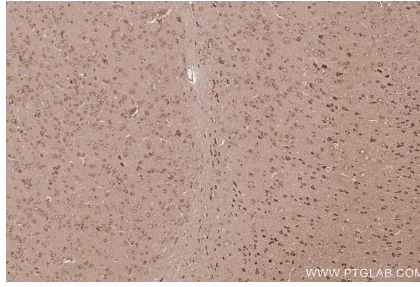
For technical support and original validation data for this product please contact:
T: 1 (888) 4PTGLAB (1-888-478-4522) (toll free in USA), or 1(312) 455-8498 (outside USA)
E: proteintech@ptglab.com
W: ptglab.com

This product is exclusively available under Proteintech Group brand and is not available to purchase from any other manufacturer.

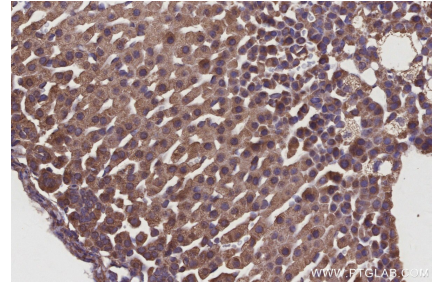
Selected Validation Data



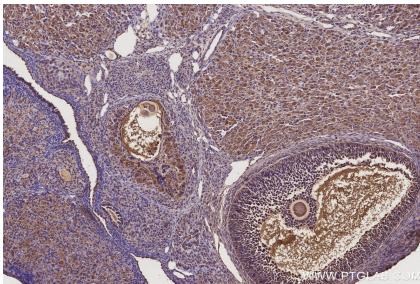
Immunohistochemical analysis of paraffin-embedded human ovary cancer tissue slide using KHC2855 (EIF2AK1 IHC Kit).



Immunohistochemical analysis of paraffin-embedded mouse brain tissue slide using KHC2855 (EIF2AK1 IHC Kit).



Immunohistochemical analysis of paraffin-embedded mouse adrenal gland tissue slide using KHC2855 (EIF2AK1 IHC Kit).



Immunohistochemical analysis of paraffin-embedded rat ovary tissue slide using KHC2855 (EIF2AK1 IHC Kit).