

IHC*easy* RIOK1 Ready-To-Use IHC Kit

Catalog Number: **KHC2858**

General Information

Sample type:
FFPE tissue
Cited sample type:
Reactivity:
Human, Mouse, Rat
Cited Reactivity:

Assay type:
Immunohistochemistry
Primary antibody type:
Rabbit Polyclonal
Secondary antibody type:
Polymer-HRP-Goat anti-Rabbit

Kit Component

Component	Size	Concentration
Antigen Retrieval Buffer	100 mL	50×
Washing Buffer	100 mL ×2	20×
Blocking Buffer	5 mL	RTU
Primary Antibody	5 mL	RTU
Secondary Antibody	5 mL	RTU
Chromogen Component A	0.2 mL	RTU
Chromogen Component B	4 mL	RTU
Signal Enhancer	5 mL	RTU
Counter Staining Reagent	5 mL	RTU
Mounting Media	5 mL	RTU
Control Slide	1 slide (Optional)	FFPE
Datasheet	1 Copy	
Manual	1 Copy	

Storage Instructions

All the reagents are stored at 2-8°C. The kit is stable for 6 months from the date of receipt.

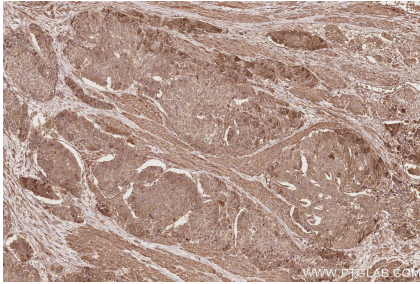
Background

RIOK1 (RIO Kinase 1) is a protein-coding gene located on chromosome 6 in humans. It encodes a serine/threonine-protein kinase that belongs to the RIO family of atypical protein kinases/ATPases. This family also includes RIOK2, RIOK3, and RIOB, which have evolved from Archaea to humans. RIOK1 is best known for its role in ribosome biogenesis and its involvement in various cellular processes, including translation regulation and cell-cycle progression.

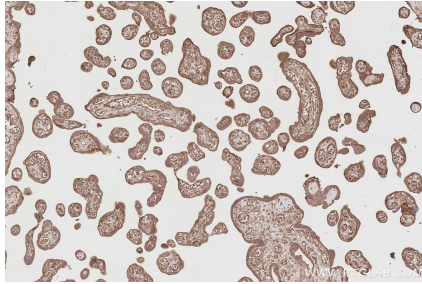
Synonyms

AD034, EC:2.7.11.1, RIO kinase 1, RIO1, Serine/threonine-protein kinase RIO1

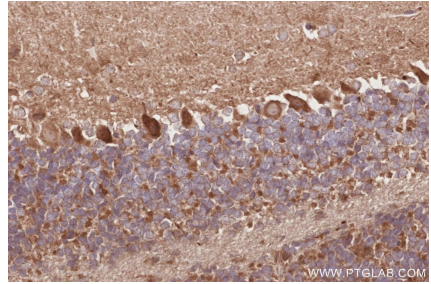
Selected Validation Data



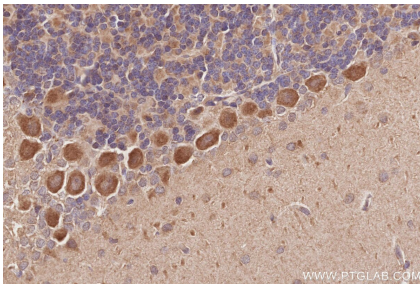
Immunohistochemical analysis of paraffin-embedded human stomach cancer tissue slide using KHC2858 (RIOK1 IHC Kit).



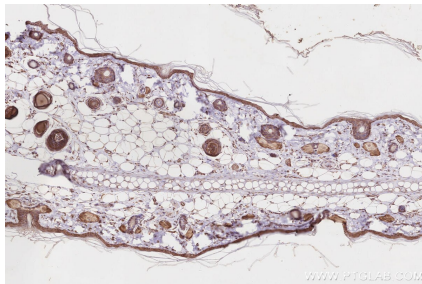
Immunohistochemical analysis of paraffin-embedded human placenta tissue slide using KHC2858 (RIOK1 IHC Kit).



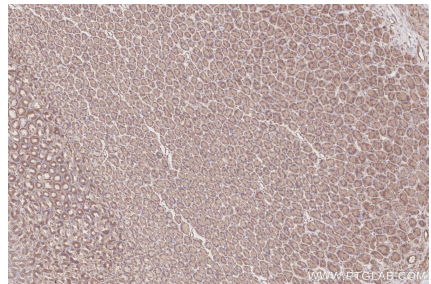
Immunohistochemical analysis of paraffin-embedded mouse cerebellum tissue slide using KHC2858 (RIOK1 IHC Kit).



Immunohistochemical analysis of paraffin-embedded rat cerebellum tissue slide using KHC2858 (RIOK1 IHC Kit).



Immunohistochemical analysis of paraffin-embedded rat skin tissue slide using KHC2858 (RIOK1 IHC Kit).



Immunohistochemical analysis of paraffin-embedded rat stomach tissue slide using KHC2858 (RIOK1 IHC Kit).