

IHC*easy* UBAC1 Ready-To-Use IHC Kit

Catalog Number: **KHC2862**

General Information

Sample type:
FFPE tissue
Cited sample type:
Reactivity:
Human, Mouse
Cited Reactivity:

Assay type:
Immunohistochemistry
Primary antibody type:
Rabbit Polyclonal
Secondary antibody type:
Polymer-HRP-Goat anti-Rabbit

Kit Component

Component	Size	Concentration
Antigen Retrieval Buffer	100 mL	50×
Washing Buffer	100 mL ×2	20×
Blocking Buffer	5 mL	RTU
Primary Antibody	5 mL	RTU
Secondary Antibody	5 mL	RTU
Chromogen Component A	0.2 mL	RTU
Chromogen Component B	4 mL	RTU
Signal Enhancer	5 mL	RTU
Counter Staining Reagent	5 mL	RTU
Mounting Media	5 mL	RTU
Control Slide	1 slide (Optional)	FFPE
Datasheet	1 Copy	
Manual	1 Copy	

Storage Instructions

All the reagents are stored at 2-8°C. The kit is stable for 6 months from the date of receipt.

Background

UBAC1 (Ubiquitin-associated domain-containing protein 1) is also named as GBDR1, KPC2, UBADC1. It has several putative phosphorylation sites, including 8 CK2 sites, as well as 1 N-glycosylation site and 2 N-myristoylation sites. It is required for poly-ubiquitination and proteasome-mediated degradation of CDKN1B during G1 phase of the cell cycle. Northern blot analysis shows UBAC1 expression with the highest levels in heart and skeletal muscle and lowest level in lung.

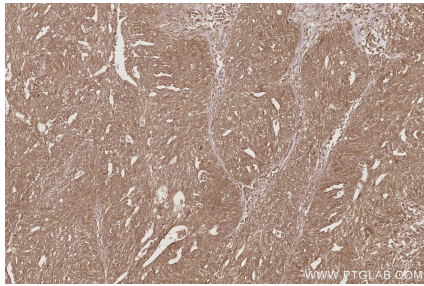
Synonyms

KPC2, GBDR1, Glioblastoma cell differentiation-related protein 1, Kip1 ubiquitination-promoting complex protein 2, UBA domain containing 1

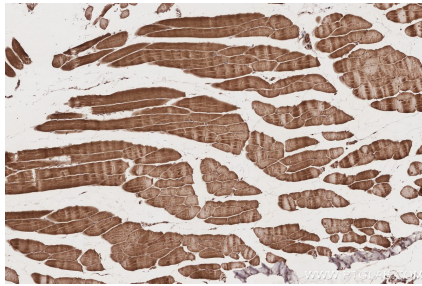
For technical support and original validation data for this product please contact:
T: 1 (888) 4PTGLAB (1-888-478-4522) (toll free in USA), or 1(312) 455-8498 (outside USA)
E: proteintech@ptglab.com
W: ptglab.com

This product is exclusively available under Proteintech Group brand and is not available to purchase from any other manufacturer.

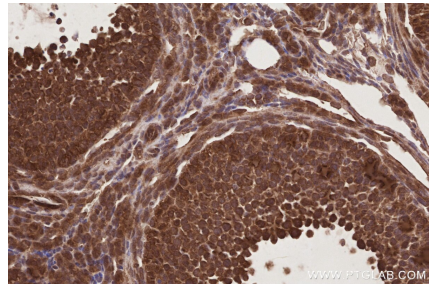
Selected Validation Data



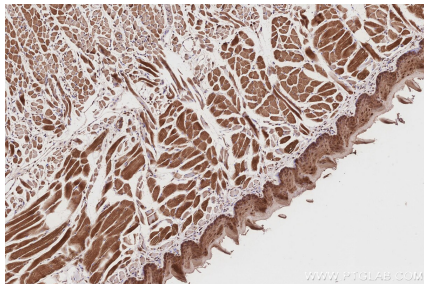
Immunohistochemical analysis of paraffin-embedded human ovary cancer tissue slide using KHC2862 (UBAC1 IHC Kit).



Immunohistochemical analysis of paraffin-embedded mouse skeletal muscle tissue slide using KHC2862 (UBAC1 IHC Kit).



Immunohistochemical analysis of paraffin-embedded mouse ovary tissue slide using KHC2862 (UBAC1 IHC Kit).



Immunohistochemical analysis of paraffin-embedded mouse tongue tissue slide using KHC2862 (UBAC1 IHC Kit).