

IHCeasy[®] CDC2L6 Ready-To-Use IHC Kit

Catalog Number: **KHC2879**

General Information

Sample type:
FFPE tissue
Cited sample type:
Reactivity:
Human, Mouse, Rat
Cited Reactivity:

Assay type:
Immunohistochemistry
Primary antibody type:
Rabbit Polyclonal
Secondary antibody type:
Polymer-HRP-Goat anti-Rabbit

Kit Component

Component	Size	Concentration
Antigen Retrieval Buffer	100 mL	50×
Washing Buffer	100 mL × 2	20×
Blocking Buffer	5 mL	RTU
Primary Antibody	5 mL	RTU
Secondary Antibody	5 mL	RTU
Chromogen Component A	0.2 mL	RTU
Chromogen Component B	4 mL	RTU
Signal Enhancer	5 mL	RTU
Counter Staining Reagent	5 mL	RTU
Mounting Media	5 mL	RTU
Control Slide	1 slide (Optional)	FFPE
Datasheet	1 Copy	
Manual	1 Copy	

Storage Instructions

All the reagents are stored at 2-8°C. The kit is stable for 6 months from the date of receipt.

Background

The CDK8 homolog, CDK19 (Cdk11, CDC2L6) was discovered by Hidden Markov model (HMM) profiling of a eukaryotic protein kinase domain, and found to have approximately 91% sequence homology to Cdk8. The two proteins share a particularly high degree of sequence conservation in their kinase and cyclin binding domain. CDK8 and CDK19, collectively termed 'Mediator Kinase,' are incorporated, in a mutually exclusive manner, as part of a 4-protein complex called the Mediator kinase module. CDK8/19 inhibition suppressed the induction of NFκB-driven transcription by p21.

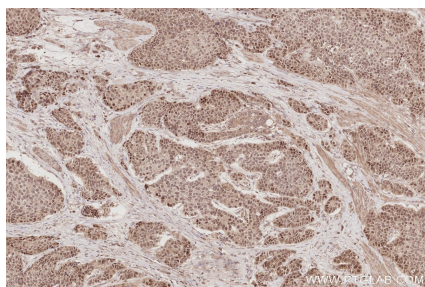
Synonyms

CDK8/19, CDC2 related protein kinase 6, CDC2-related protein kinase 6, CDK11, CDK19

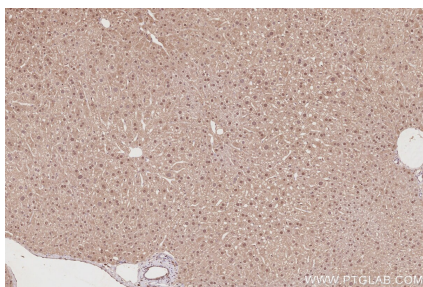
For technical support and original validation data for this product please contact:
T: 1 (888) 4PTGLAB (1-888-478-4522) (toll free in USA), or 1(312) 455-8498 (outside USA)
E: proteintech@ptglab.com
W: ptglab.com

This product is exclusively available under Proteintech Group brand and is not available to purchase from any other manufacturer.

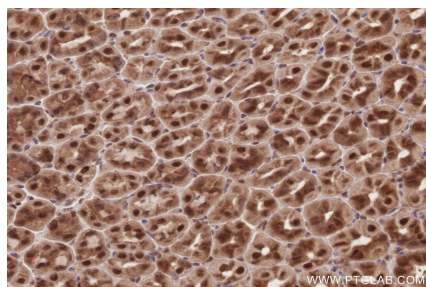
Selected Validation Data



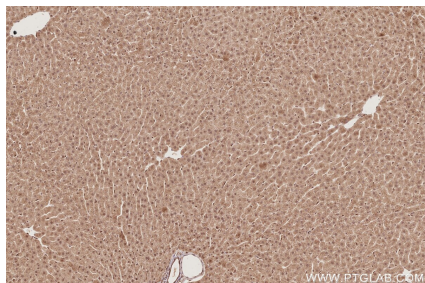
Immunohistochemical analysis of paraffin-embedded human stomach cancer tissue slide using KHC2879 (CDC2L6 IHC Kit).



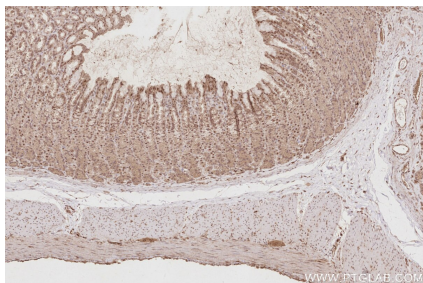
Immunohistochemical analysis of paraffin-embedded mouse liver tissue slide using KHC2879 (CDC2L6 IHC Kit).



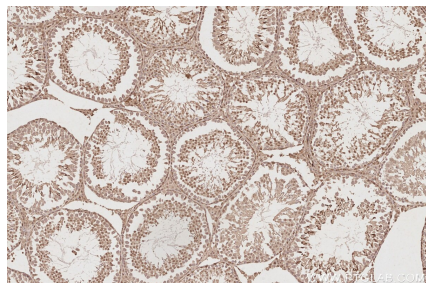
Immunohistochemical analysis of paraffin-embedded mouse stomach tissue slide using KHC2879 (CDC2L6 IHC Kit).



Immunohistochemical analysis of paraffin-embedded rat liver tissue slide using KHC2879 (CDC2L6 IHC Kit).



Immunohistochemical analysis of paraffin-embedded rat stomach tissue slide using KHC2879 (CDC2L6 IHC Kit).



Immunohistochemical analysis of paraffin-embedded rat testis tissue slide using KHC2879 (CDC2L6 IHC Kit).