

IHC*easy* DUSP16 Ready-To-Use IHC Kit

Catalog Number: **KHC2885**

General Information

Sample type:
FFPE tissue
Cited sample type:
Reactivity:
Human, Mouse, Rat
Cited Reactivity:

Assay type:
Immunohistochemistry
Primary antibody type:
Rabbit Polyclonal
Secondary antibody type:
Polymer-HRP-Goat anti-Rabbit

Kit Component

Component	Size	Concentration
Antigen Retrieval Buffer	100 mL	50×
Washing Buffer	100 mL ×2	20×
Blocking Buffer	5 mL	RTU
Primary Antibody	5 mL	RTU
Secondary Antibody	5 mL	RTU
Chromogen Component A	0.2 mL	RTU
Chromogen Component B	4 mL	RTU
Signal Enhancer	5 mL	RTU
Counter Staining Reagent	5 mL	RTU
Mounting Media	5 mL	RTU
Control Slide	1 slide (Optional)	FFPE
Datasheet	1 Copy	
Manual	1 Copy	

Storage Instructions

All the reagents are stored at 2-8°C. The kit is stable for 6 months from the date of receipt.

Background

DUSP16, also known as MKP-7, is a mitogen-activated protein kinase phosphatase that is a member of the dual specificity protein phosphatase subfamily. DUSP16 dephosphorylates JUN kinases (JNKs) specifically and thereby regulates T-cell differentiation, which can be responsible for the pathogenesis of Burkitt's lymphoma and cerebral ischemia. DUSP16 was also found to induce the expression of VCAM-1 through the suppression of JNK signaling.

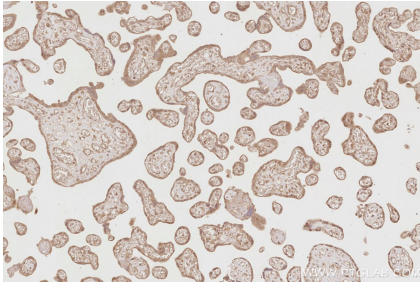
Synonyms

MKP7, EC:3.1.3.16, KIAA1700, MAP kinase phosphatase 7, Mitogen-activated protein kinase phosphatase 7

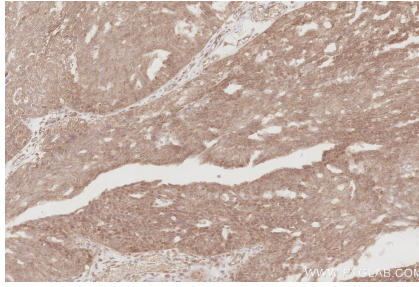
For technical support and original validation data for this product please contact:
T: 1 (888) 4PTGLAB (1-888-478-4522) (toll free in USA), or 1(312) 455-8498 (outside USA)
E: proteintech@ptglab.com
W: ptglab.com

This product is exclusively available under Proteintech Group brand and is not available to purchase from any other manufacturer.

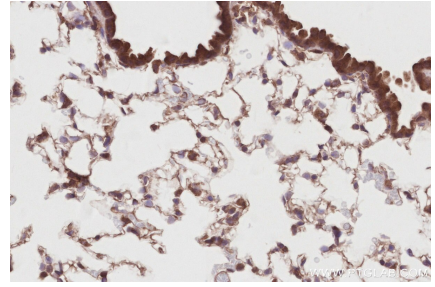
Selected Validation Data



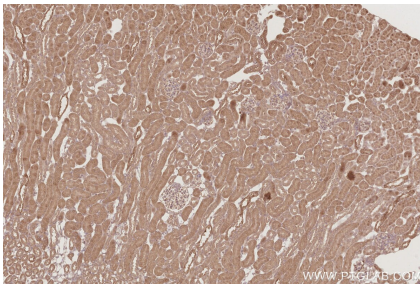
Immunohistochemical analysis of paraffin-embedded human placenta tissue slide using KHC2885 (DUSP16 IHC Kit).



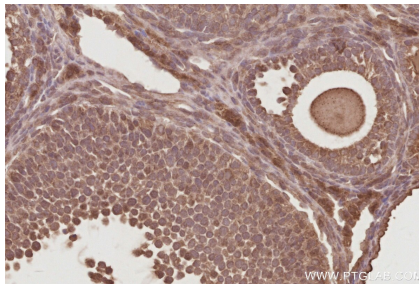
Immunohistochemical analysis of paraffin-embedded human ovary cancer tissue slide using KHC2885 (DUSP16 IHC Kit).



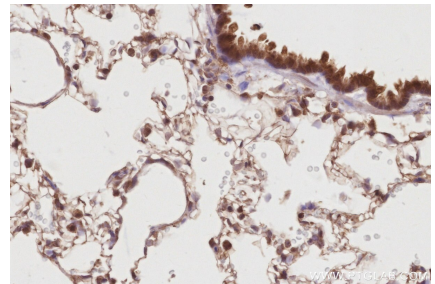
Immunohistochemical analysis of paraffin-embedded mouse lung tissue slide using KHC2885 (DUSP16 IHC Kit).



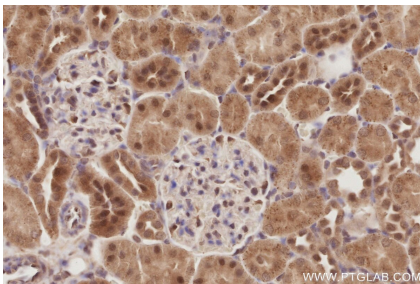
Immunohistochemical analysis of paraffin-embedded mouse kidney tissue slide using KHC2885 (DUSP16 IHC Kit).



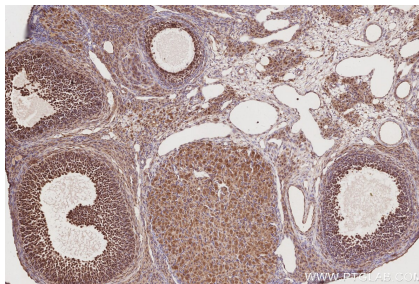
Immunohistochemical analysis of paraffin-embedded mouse ovary tissue slide using KHC2885 (DUSP16 IHC Kit).



Immunohistochemical analysis of paraffin-embedded rat lung tissue slide using KHC2885 (DUSP16 IHC Kit).



Immunohistochemical analysis of paraffin-embedded rat kidney tissue slide using KHC2885 (DUSP16 IHC Kit).



Immunohistochemical analysis of paraffin-embedded rat ovary tissue slide using KHC2885 (DUSP16 IHC Kit).