

IHCeasy[®] CEP44 Ready-To-Use IHC Kit

Catalog Number: **KHC2894**

General Information

Sample type:
FFPE tissue
Cited sample type:
Reactivity:
Human, Mouse, Rat
Cited Reactivity:

Assay type:
Immunohistochemistry
Primary antibody type:
Rabbit Polyclonal
Secondary antibody type:
Polymer-HRP-Goat anti-Rabbit

Kit Component

Component	Size	Concentration
Antigen Retrieval Buffer	100 mL	50×
Washing Buffer	100 mL ×2	20×
Blocking Buffer	5 mL	RTU
Primary Antibody	5 mL	RTU
Secondary Antibody	5 mL	RTU
Chromogen Component A	0.2 mL	RTU
Chromogen Component B	4 mL	RTU
Signal Enhancer	5 mL	RTU
Counter Staining Reagent	5 mL	RTU
Mounting Media	5 mL	RTU
Control Slide	1 slide (Optional)	FFPE
Datasheet	1 Copy	
Manual	1 Copy	

Storage Instructions

All the reagents are stored at 2-8°C. The kit is stable for 6 months from the date of receipt.

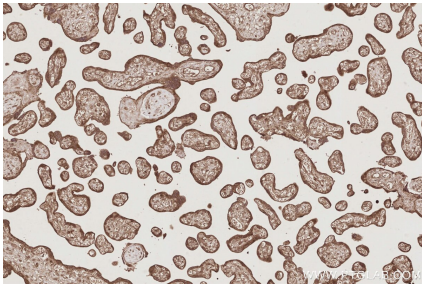
Background

CEP44, also named as KIAA1712 and PS1TP3, localizes to centrosomes, spindle poles, and weakly in midbody.

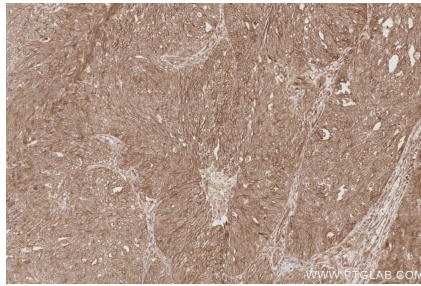
Synonyms

Centrosomal protein of 44 kDa, HBV PreS1-transactivated protein 3, PS1TP3

Selected Validation Data



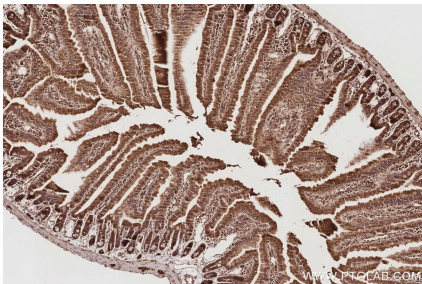
Immunohistochemical analysis of paraffin-embedded human placenta tissue slide using KHC2894 (CEP44 IHC Kit).



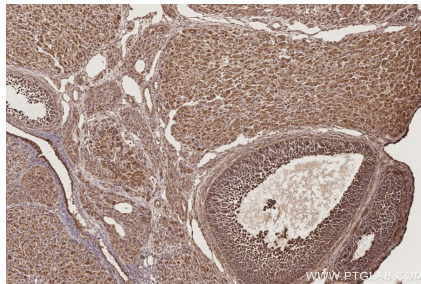
Immunohistochemical analysis of paraffin-embedded human ovary cancer tissue slide using KHC2894 (CEP44 IHC Kit).



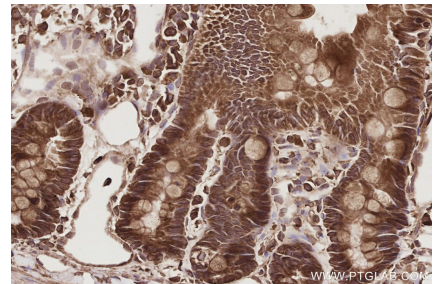
Immunohistochemical analysis of paraffin-embedded mouse ovary tissue slide using KHC2894 (CEP44 IHC Kit).



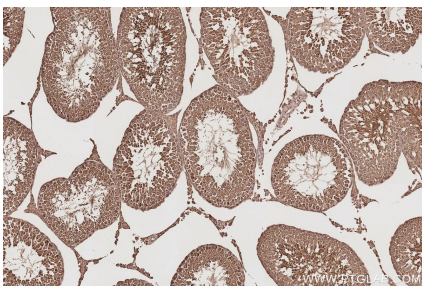
Immunohistochemical analysis of paraffin-embedded mouse small intestine tissue slide using KHC2894 (CEP44 IHC Kit).



Immunohistochemical analysis of paraffin-embedded rat ovary tissue slide using KHC2894 (CEP44 IHC Kit).



Immunohistochemical analysis of paraffin-embedded rat small intestine tissue slide using KHC2894 (CEP44 IHC Kit).



Immunohistochemical analysis of paraffin-embedded rat testis tissue slide using KHC2894 (CEP44 IHC Kit).