

IHC*easy* EIF5A1/EIF5A2 Ready-To-Use IHC Kit

Catalog Number: **KHC2896**

General Information

Sample type:
FFPE tissue
Cited sample type:
Reactivity:
Human, Mouse, Rat
Cited Reactivity:

Assay type:
Immunohistochemistry
Primary antibody type:
Rabbit Polyclonal
Secondary antibody type:
Polymer-HRP-Goat anti-Rabbit

Kit Component

Component	Size	Concentration
Antigen Retrieval Buffer	100 mL	50×
Washing Buffer	100 mL ×2	20×
Blocking Buffer	5 mL	RTU
Primary Antibody	5 mL	RTU
Secondary Antibody	5 mL	RTU
Chromogen Component A	0.2 mL	RTU
Chromogen Component B	4 mL	RTU
Signal Enhancer	5 mL	RTU
Counter Staining Reagent	5 mL	RTU
Mounting Media	5 mL	RTU
Control Slide	1 slide (Optional)	FFPE
Datasheet	1 Copy	
Manual	1 Copy	

Storage Instructions

All the reagents are stored at 2-8°C. The kit is stable for 6 months from the date of receipt.

Background

Eukaryotic initiation factor 5A (EIF5A) plays an essential role in the viability of eukaryotic cells. EIF5A is known to act as a translation initiation factor specific for a small number of mRNAs, a cellular target of HIV-1 REV protein, and an exportin-4-dependent nuclear export cargo. It is also involved in mRNA turnover and the establishment of actin polarity. EIF5A2, one isoform of EIF5A, has a key at the level of mRNA turnover by acting downstream of decapping. It also involved in actin dynamics and cell cycle progression, mRNA decay and probably in a pathway involved in stress response and maintenance of cell wall integrity. EIF5A2 shares 84% identity of amino acid sequence with EIF5A1 isoform. Primary antibody in this kit recognizes both EIF5A2 and EIF5A1.

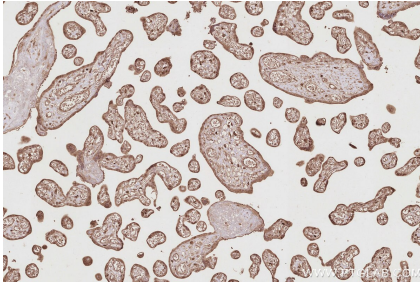
Synonyms

EIF5A2, EIF 5A2, eIF-5A2, eIF-5A-2, eIF5AII

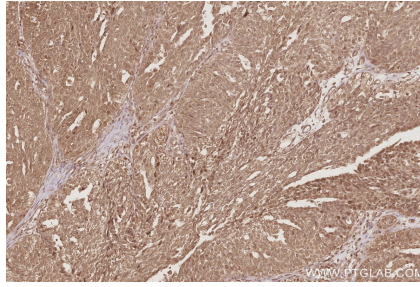
For technical support and original validation data for this product please contact:
T: 1 (888) 4PTGLAB (1-888-478-4522) (toll free in USA), or 1(312) 455-8498 (outside USA)
E: proteintech@ptglab.com
W: ptglab.com

This product is exclusively available under Proteintech Group brand and is not available to purchase from any other manufacturer.

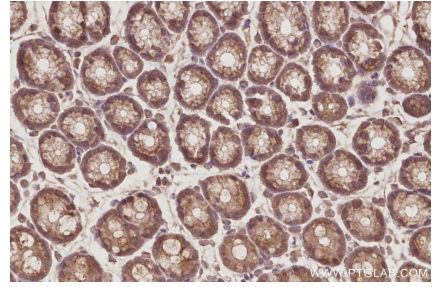
Selected Validation Data



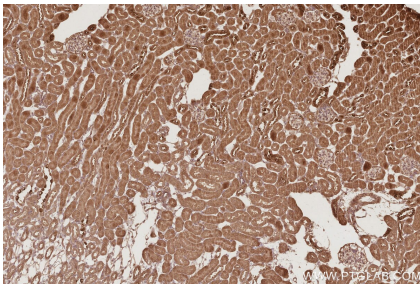
Immunohistochemical analysis of paraffin-embedded human placenta tissue slide using KHC2896 (EIF5A1/EIF5A2 IHC Kit).



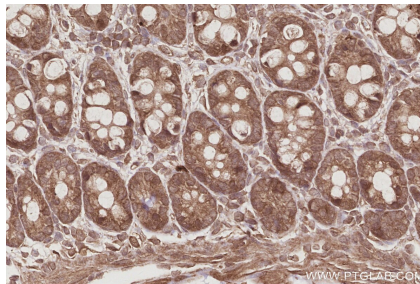
Immunohistochemical analysis of paraffin-embedded human ovary cancer tissue slide using KHC2896 (EIF5A1/EIF5A2 IHC Kit).



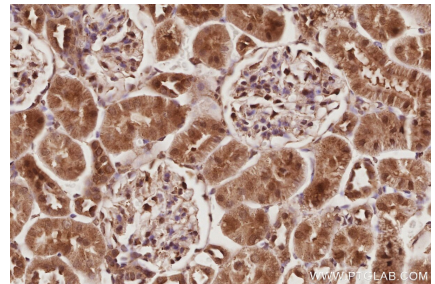
Immunohistochemical analysis of paraffin-embedded mouse colon tissue slide using KHC2896 (EIF5A1/EIF5A2 IHC Kit).



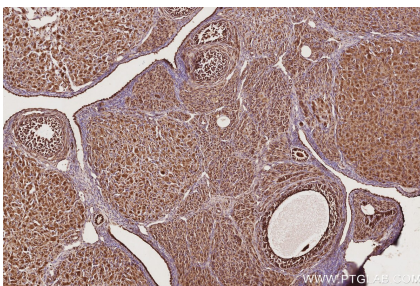
Immunohistochemical analysis of paraffin-embedded mouse kidney tissue slide using KHC2896 (EIF5A1/EIF5A2 IHC Kit).



Immunohistochemical analysis of paraffin-embedded rat colon tissue slide using KHC2896 (EIF5A1/EIF5A2 IHC Kit).



Immunohistochemical analysis of paraffin-embedded rat kidney tissue slide using KHC2896 (EIF5A1/EIF5A2 IHC Kit).



Immunohistochemical analysis of paraffin-embedded rat ovary tissue slide using KHC2896 (EIF5A1/EIF5A2 IHC Kit).