

IHC*easy* SLC38A1 Ready-To-Use IHC Kit

Catalog Number: **KHC2907**

General Information

Sample type:
FFPE tissue
Cited sample type:
Reactivity:
Human, Mouse
Cited Reactivity:

Assay type:
Immunohistochemistry
Primary antibody type:
Rabbit Polyclonal
Secondary antibody type:
Polymer-HRP-Goat anti-Rabbit

Kit Component

Component	Size	Concentration
Antigen Retrieval Buffer	100 mL	50×
Washing Buffer	100 mL ×2	20×
Blocking Buffer	5 mL	RTU
Primary Antibody	5 mL	RTU
Secondary Antibody	5 mL	RTU
Chromogen Component A	0.2 mL	RTU
Chromogen Component B	4 mL	RTU
Signal Enhancer	5 mL	RTU
Counter Staining Reagent	5 mL	RTU
Mounting Media	5 mL	RTU
Control Slide	1 slide (Optional)	FFPE
Datasheet	1 Copy	
Manual	1 Copy	

Storage Instructions

All the reagents are stored at 2-8°C. The kit is stable for 6 months from the date of receipt.

Background

SLC38A1 (Sodium-coupled neutral amino acid transporter 1), is also named as SNAT1, which is a symporter that cotransports short-chain neutral amino acids and sodium ions from the extracellular to the intracellular side of the cell membrane. Inhibition of SLC38A1 reduced tumor growth, cellular migration, invasion, and induced senescence in melanoma cells. SLC38A1 was identified as a positive regulator of mTORC1 in neurons, which promoted ischemic brain damage by mTOR-autophagy system. SLC38A1 is mainly expressed in brain and placenta.

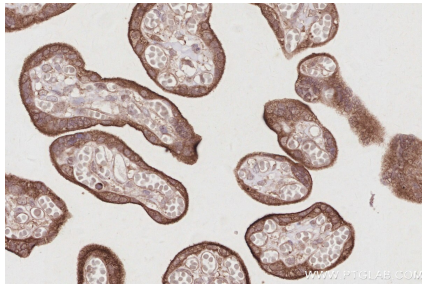
Synonyms

Amino acid transporter A1, ATA1, NAT2, N-system amino acid transporter 2, SAT1

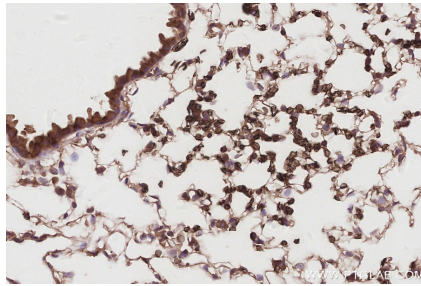
For technical support and original validation data for this product please contact:
T: 1 (888) 4PTGLAB (1-888-478-4522) (toll free in USA), or 1(312) 455-8498 (outside USA)
E: proteintech@ptglab.com
W: ptglab.com

This product is exclusively available under Proteintech Group brand and is not available to purchase from any other manufacturer.

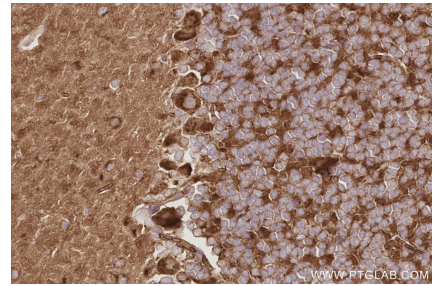
Selected Validation Data



Immunohistochemical analysis of paraffin-embedded human placenta tissue slide using KHC2907 (SLC38A1 IHC Kit).



Immunohistochemical analysis of paraffin-embedded mouse lung tissue slide using KHC2907 (SLC38A1 IHC Kit).



Immunohistochemical analysis of paraffin-embedded mouse cerebellum tissue slide using KHC2907 (SLC38A1 IHC Kit).