

IHC*easy* CDC42EP4 Ready-To-Use IHC Kit

Catalog Number: **KHC2911**

General Information

Sample type:
FFPE tissue

Cited sample type:

Reactivity:
Human, Mouse, Rat

Cited Reactivity:

Assay type:
Immunohistochemistry

Primary antibody type:
Rabbit Polyclonal

Secondary antibody type:
Polymer-HRP-Goat anti-Rabbit

Kit Component

Component	Size	Concentration
Antigen Retrieval Buffer	100 mL	50×
Washing Buffer	100 mL × 2	20×
Blocking Buffer	5 mL	RTU
Primary Antibody	5 mL	RTU
Secondary Antibody	5 mL	RTU
Chromogen Component A	0.2 mL	RTU
Chromogen Component B	4 mL	RTU
Signal Enhancer	5 mL	RTU
Counter Staining Reagent	5 mL	RTU
Mounting Media	5 mL	RTU
Control Slide	1 slide (Optional)	FFPE
Datasheet	1 Copy	
Manual	1 Copy	

Storage Instructions

All the reagents are stored at 2-8°C. The kit is stable for 6 months from the date of receipt.

Background

CDC42EP4, or Cell division cycle 42 effector protein 4, is a member of the CDC42-binding protein family. This protein interacts with Rho family GTPases and plays a role in regulating the organization of the actin cytoskeleton. It has been shown to bind both CDC42 and TC10 GTPases in a GTP-dependent manner. Overexpression of CDC42EP4 in fibroblasts can induce pseudopodia formation, suggesting its involvement in actin filament assembly and cell shape control. CDC42EP4 is also implicated in cancer progression, particularly in prostate cancer. Furthermore, CDC42EP4 has been implicated in the regulation of glutamate transporters, which are crucial for maintaining glutamate homeostasis in the nervous system. It has been suggested that CDC42EP4 may interact with septins, a family of polymerizing GTPases that constitute the membrane skeleton, and this interaction could potentially influence the localization and activity of glutamate transporters.

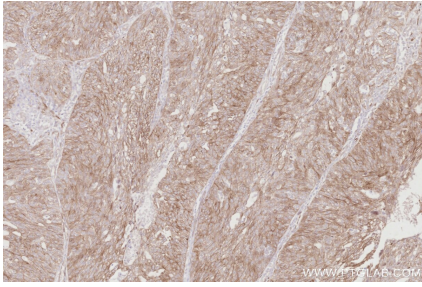
Synonyms

Binder of Rho GTPases 4, BORG4, Cdc42 effector protein 4, CEP4

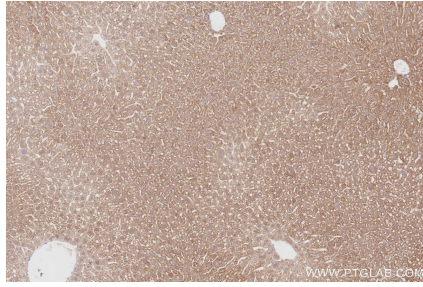
For technical support and original validation data for this product please contact:
T: 1 (888) 4PTGLAB (1-888-478-4522) (toll free in USA), or 1(312) 455-8498 (outside USA)
E: proteintech@ptglab.com
W: ptglab.com

This product is exclusively available under Proteintech Group brand and is not available to purchase from any other manufacturer.

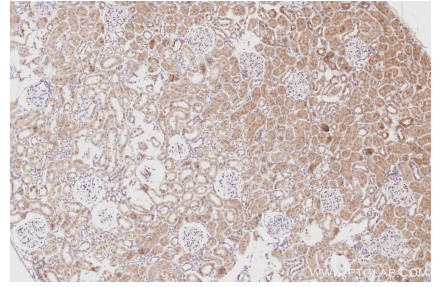
Selected Validation Data



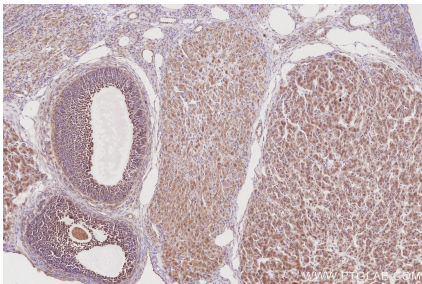
Immunohistochemical analysis of paraffin-embedded human ovary cancer tissue slide using KHC2911 (CDC42EP4 IHC Kit).



Immunohistochemical analysis of paraffin-embedded mouse liver tissue slide using KHC2911 (CDC42EP4 IHC Kit).



Immunohistochemical analysis of paraffin-embedded rat kidney tissue slide using KHC2911 (CDC42EP4 IHC Kit).



Immunohistochemical analysis of paraffin-embedded rat ovary tissue slide using KHC2911 (CDC42EP4 IHC Kit).