

IHCeasy[®] FBXL15 Ready-To-Use IHC Kit

Catalog Number: **KHC2915**

General Information

Sample type:
FFPE tissue
Cited sample type:
Reactivity:
Human, Mouse, Rat
Cited Reactivity:

Assay type:
Immunohistochemistry
Primary antibody type:
Rabbit Polyclonal
Secondary antibody type:
Polymer-HRP-Goat anti-Rabbit

Kit Component

Component	Size	Concentration
Antigen Retrieval Buffer	100 mL	50×
Washing Buffer	100 mL ×2	20×
Blocking Buffer	5 mL	RTU
Primary Antibody	5 mL	RTU
Secondary Antibody	5 mL	RTU
Chromogen Component A	0.2 mL	RTU
Chromogen Component B	4 mL	RTU
Signal Enhancer	5 mL	RTU
Counter Staining Reagent	5 mL	RTU
Mounting Media	5 mL	RTU
Control Slide	1 slide (Optional)	FFPE
Datasheet	1 Copy	
Manual	1 Copy	

Storage Instructions

All the reagents are stored at 2-8°C. The kit is stable for 6 months from the date of receipt.

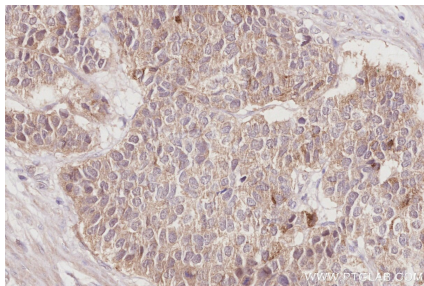
Background

FBXL15, also known as FBXO37, belongs to the FBXL15 family. FBXL15 plays a role in the G2/M transition of the cell cycle, as well as in cellular protein metabolic processes and the positive regulation of the bone morphogenetic proteins signaling pathway.

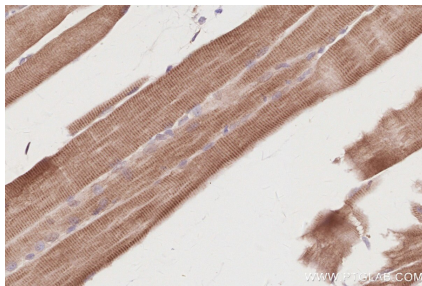
Synonyms

Fbl15, F-box only protein 37, F-box/LRR-repeat protein 15, FBXO37, JET

Selected Validation Data



Immunohistochemical analysis of paraffin-embedded human stomach cancer tissue slide using KHC2915 (FBXL15 IHC Kit).



Immunohistochemical analysis of paraffin-embedded mouse skeletal muscle tissue slide using KHC2915 (FBXL15 IHC Kit).



Immunohistochemical analysis of paraffin-embedded rat stomach tissue slide using KHC2915 (FBXL15 IHC Kit).