

IHC*easy* RNF167 Ready-To-Use IHC Kit

Catalog Number: **KHC2923**

General Information

Sample type:
FFPE tissue
Cited sample type:
Reactivity:
Human, Mouse
Cited Reactivity:

Assay type:
Immunohistochemistry
Primary antibody type:
Rabbit Polyclonal
Secondary antibody type:
Polymer-HRP-Goat anti-Rabbit

Kit Component

Component	Size	Concentration
Antigen Retrieval Buffer	100 mL	50×
Washing Buffer	100 mL ×2	20×
Blocking Buffer	5 mL	RTU
Primary Antibody	5 mL	RTU
Secondary Antibody	5 mL	RTU
Chromogen Component A	0.2 mL	RTU
Chromogen Component B	4 mL	RTU
Signal Enhancer	5 mL	RTU
Counter Staining Reagent	5 mL	RTU
Mounting Media	5 mL	RTU
Control Slide	1 slide (Optional)	FFPE
Datasheet	1 Copy	
Manual	1 Copy	

Storage Instructions

All the reagents are stored at 2-8°C. The kit is stable for 6 months from the date of receipt.

Background

RNF167 also named as, ring finger protein 167 or LP2254, is a 350 amino acid protein, which contains one protease associated domain and one Ring-type zinc finger. RNF167 as single-pass membrane protein localizes in the endomembrane system and is strongly expressed in the kidney and liver. RNF167 may act as an E3 ubiquitin-protein ligase, or as a part of the E3 complex, which accepts ubiquitin from specific E3 ubiquitin from ubiquitin conjugation enzymes. RNF167 also may play a role in growth regulation in G1/S transition.

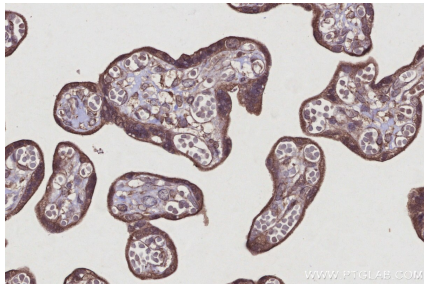
Synonyms

E3 ubiquitin-protein ligase RNF167, EC:2.3.2.27, LP2254, RING finger protein 167, RING105

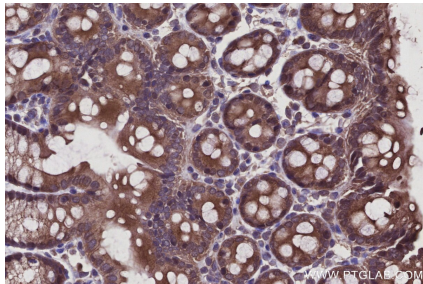
For technical support and original validation data for this product please contact:
T: 1 (888) 4PTGLAB (1-888-478-4522) (toll free in USA), or 1(312) 455-8498 (outside USA)
E: proteintech@ptglab.com
W: ptglab.com

This product is exclusively available under Proteintech Group brand and is not available to purchase from any other manufacturer.

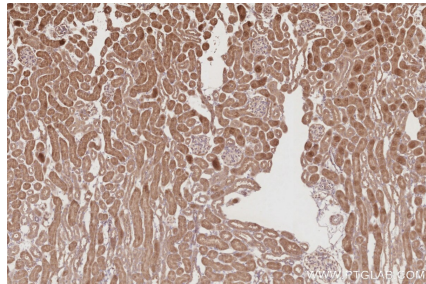
Selected Validation Data



Immunohistochemical analysis of paraffin-embedded human placenta tissue slide using KHC2923 (RNF167 IHC Kit).



Immunohistochemical analysis of paraffin-embedded mouse colon tissue slide using KHC2923 (RNF167 IHC Kit).



Immunohistochemical analysis of paraffin-embedded mouse kidney tissue slide using KHC2923 (RNF167 IHC Kit).