

IHC*easy* Arp5/ACTR5 Ready-To-Use IHC Kit

Catalog Number: **KHC2926**

General Information

Sample type:
FFPE tissue
Cited sample type:
Reactivity:
Human, Mouse, Rat
Cited Reactivity:

Assay type:
Immunohistochemistry
Primary antibody type:
Rabbit Polyclonal
Secondary antibody type:
Polymer-HRP-Goat anti-Rabbit

Kit Component

Component	Size	Concentration
Antigen Retrieval Buffer	100 mL	50×
Washing Buffer	100 mL ×2	20×
Blocking Buffer	5 mL	RTU
Primary Antibody	5 mL	RTU
Secondary Antibody	5 mL	RTU
Chromogen Component A	0.2 mL	RTU
Chromogen Component B	4 mL	RTU
Signal Enhancer	5 mL	RTU
Counter Staining Reagent	5 mL	RTU
Mounting Media	5 mL	RTU
Control Slide	1 slide (Optional)	FFPE
Datasheet	1 Copy	
Manual	1 Copy	

Storage Instructions

All the reagents are stored at 2-8°C. The kit is stable for 6 months from the date of receipt.

Background

Arp5 is a member of nuclear actin-related proteins (ARPs) that function as components of the chromatin-remodeling complex. Recently study reported that Arp5 regulates smooth muscle cell differentiation through interaction with myocardin (Myocd). Arp5 has been identified as negative regulator of Myocd, suppressing Myocd activity in the nucleus through tightly binding with Myocd RPEL motifs. Alternative splicing results in two variants of Arp5: a broadly expressed arp5-common, and a smooth muscle restricted arp5-sm. Expression of Arp5-sm protein is strongly suppressed in well-differentiated smooth muscle cells by partial messenger RNA decay and translational suppression.

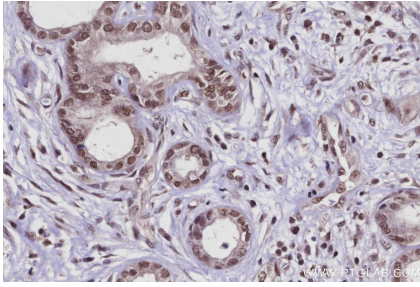
Synonyms

ACTR5, ARP5, Actin related protein 5, Actin-related protein 5, hARP5

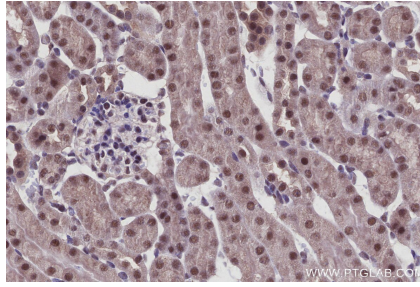
For technical support and original validation data for this product please contact:
T: 1 (888) 4PTGLAB (1-888-478-4522) (toll free in USA), or 1(312) 455-8498 (outside USA)
E: proteintech@ptglab.com
W: ptglab.com

This product is exclusively available under Proteintech Group brand and is not available to purchase from any other manufacturer.

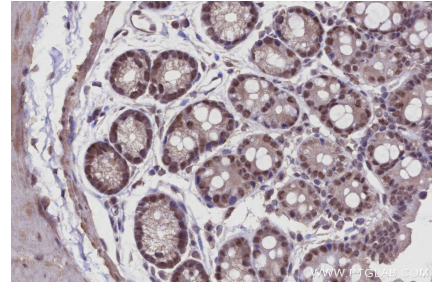
Selected Validation Data



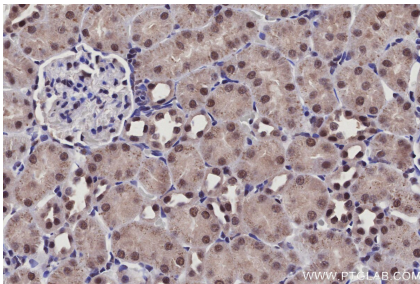
Immunohistochemical analysis of paraffin-embedded human pancreas cancer tissue slide using KHC2926 (Arp5/ACTR5 IHC Kit).



Immunohistochemical analysis of paraffin-embedded mouse kidney tissue slide using KHC2926 (Arp5/ACTR5 IHC Kit).



Immunohistochemical analysis of paraffin-embedded mouse colon tissue slide using KHC2926 (Arp5/ACTR5 IHC Kit).



Immunohistochemical analysis of paraffin-embedded rat kidney tissue slide using KHC2926 (Arp5/ACTR5 IHC Kit).