

IHC*easy* CSNK1G1 Ready-To-Use IHC Kit

Catalog Number: **KHC2932**

General Information

Sample type:
FFPE tissue
Cited sample type:
Reactivity:
Human, Mouse, Rat
Cited Reactivity:

Assay type:
Immunohistochemistry
Primary antibody type:
Rabbit Polyclonal
Secondary antibody type:
Polymer-HRP-Goat anti-Rabbit

Kit Component

| Component | Size | Concentration |
|--------------------------|--------------------|---------------|
| Antigen Retrieval Buffer | 100 mL | 50× |
| Washing Buffer | 100 mL ×2 | 20× |
| Blocking Buffer | 5 mL | RTU |
| Primary Antibody | 5 mL | RTU |
| Secondary Antibody | 5 mL | RTU |
| Chromogen Component A | 0.2 mL | RTU |
| Chromogen Component B | 4 mL | RTU |
| Signal Enhancer | 5 mL | RTU |
| Counter Staining Reagent | 5 mL | RTU |
| Mounting Media | 5 mL | RTU |
| Control Slide | 1 slide (Optional) | FFPE |
| Datasheet | 1 Copy | |
| Manual | 1 Copy | |

Storage Instructions

All the reagents are stored at 2-8°C. The kit is stable for 6 months from the date of receipt.

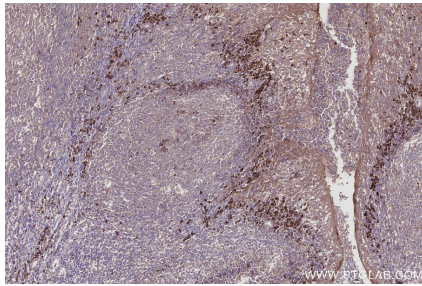
Background

The casein kinase 1 (CK1) is a family of Ser/Thr protein kinases that functions as regulator in signal transduction of eukaryotic cells. CSNK1G1 (Casein kinase I isoform gamma-1) plays an important role in activating the ATR/Chk1 pathway by phosphorylating Claspin, which was identified as a Chk1-activating protein. Recently, it has been found that CSNK1G1 can phosphorylate NF-κB subunit p65 at Ser536, which promotes its ubiquitin-mediated degradation by E3 ligases COMMD1 and CUL2.

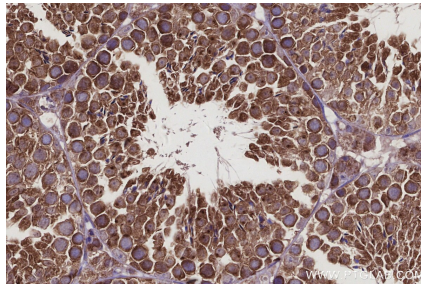
Synonyms

Casein kinase I isoform gamma-1, CKI gamma 1, CKI-gamma 1, CSNK, CSNK1

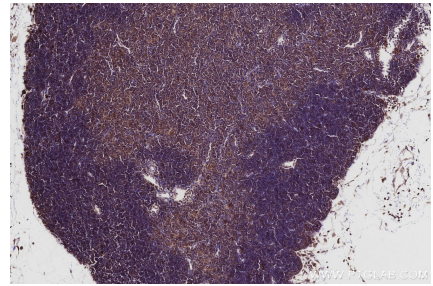
Selected Validation Data



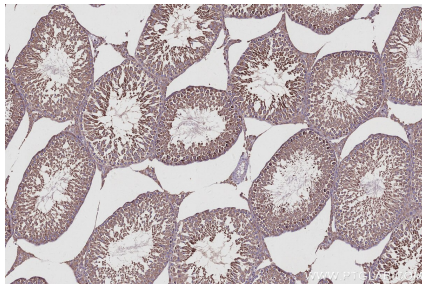
Immunohistochemical analysis of paraffin-embedded human tonsillitis tissue slide using KHC2932 (CSNK1G1 IHC Kit).



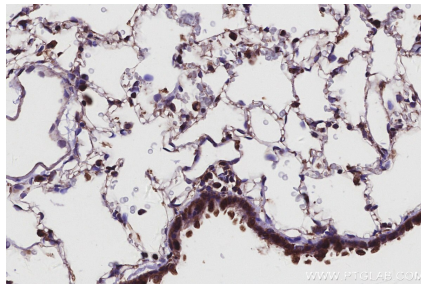
Immunohistochemical analysis of paraffin-embedded mouse testis tissue slide using KHC2932 (CSNK1G1 IHC Kit).



Immunohistochemical analysis of paraffin-embedded mouse thymus tissue slide using KHC2932 (CSNK1G1 IHC Kit).



Immunohistochemical analysis of paraffin-embedded rat testis tissue slide using KHC2932 (CSNK1G1 IHC Kit).



Immunohistochemical analysis of paraffin-embedded rat lung tissue slide using KHC2932 (CSNK1G1 IHC Kit).