

IHC*easy* ARFGAP3 Ready-To-Use IHC Kit

Catalog Number: **KHC2934**

General Information

Sample type:
FFPE tissue
Cited sample type:
Reactivity:
Human, Mouse
Cited Reactivity:

Assay type:
Immunohistochemistry
Primary antibody type:
Rabbit Polyclonal
Secondary antibody type:
Polymer-HRP-Goat anti-Rabbit

Kit Component

Component	Size	Concentration
Antigen Retrieval Buffer	100 mL	50×
Washing Buffer	100 mL ×2	20×
Blocking Buffer	5 mL	RTU
Primary Antibody	5 mL	RTU
Secondary Antibody	5 mL	RTU
Chromogen Component A	0.2 mL	RTU
Chromogen Component B	4 mL	RTU
Signal Enhancer	5 mL	RTU
Counter Staining Reagent	5 mL	RTU
Mounting Media	5 mL	RTU
Control Slide	1 slide (Optional)	FFPE
Datasheet	1 Copy	
Manual	1 Copy	

Storage Instructions

All the reagents are stored at 2-8°C. The kit is stable for 6 months from the date of receipt.

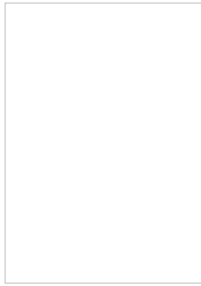
Background

ARFGAP3, also named as ADP-ribosylation factor GTPase-activating protein 3, is a 516 amino acid protein, which is Widely expressed with Highest expression in endocrine glands (pancreas, pituitary gland, salivary gland, and prostate). ARFGAP3 is a GTPase-activating protein (GAP) for ADP ribosylation factor 1 (ARF1). Hydrolysis of ARF1-bound GTP may lead to dissociation of coatamer from Golgi-derived membranes to allow fusion with target membranes.

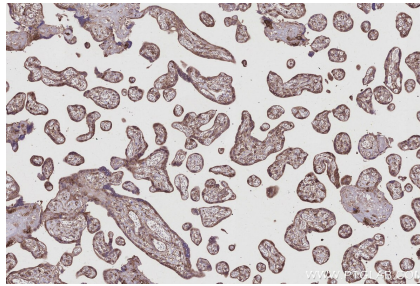
Synonyms

ADP-ribosylation factor GTPase-activating protein 3, ARF GAP 3, ARFGAP1

Selected Validation Data



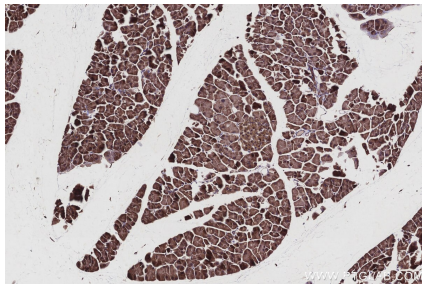
Immunohistochemical analysis of paraffin-embedded human prostate hyperplasia tissue slide using KHC2934 (ARFGAP3 IHC Kit).



Immunohistochemical analysis of paraffin-embedded human placenta tissue slide using KHC2934 (ARFGAP3 IHC Kit).



Immunohistochemical analysis of paraffin-embedded mouse prostate tissue slide using KHC2934 (ARFGAP3 IHC Kit).



Immunohistochemical analysis of paraffin-embedded mouse pancreas tissue slide using KHC2934 (ARFGAP3 IHC Kit).