

IHC*easy* RAB9B Ready-To-Use IHC Kit

Catalog Number: **KHC2936**

General Information

Sample type:
FFPE tissue
Cited sample type:
Reactivity:
Human, Mouse, Rat
Cited Reactivity:

Assay type:
Immunohistochemistry
Primary antibody type:
Mouse Monoclonal
Secondary antibody type:
Polymer-HRP-Goat anti-Mouse

Kit Component

Component	Size	Concentration
Antigen Retrieval Buffer	100 mL	50×
Washing Buffer	100 mL ×2	20×
Blocking Buffer	5 mL	RTU
Primary Antibody	5 mL	RTU
Secondary Antibody	5 mL	RTU
Chromogen Component A	0.2 mL	RTU
Chromogen Component B	4 mL	RTU
Signal Enhancer	5 mL	RTU
Counter Staining Reagent	5 mL	RTU
Mounting Media	5 mL	RTU
Control Slide	1 slide (Optional)	FFPE
Datasheet	1 Copy	
Manual	1 Copy	

Storage Instructions

All the reagents are stored at 2-8°C. The kit is stable for 6 months from the date of receipt.

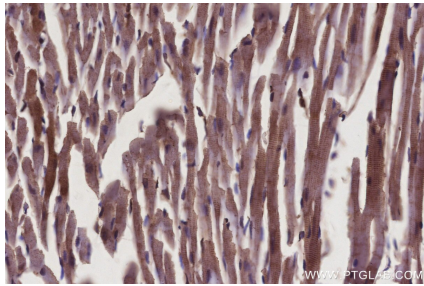
Background

RAB9B, also named as RAB9L, is involved in the transport of proteins between the endosomes and the trans Golgi network. RAB9B belongs to the Ras-related superfamily of guanine nucleotide binding proteins, which includes the Ral/Rec, Rap, R-Ras, and Rho/Rab subfamilies.

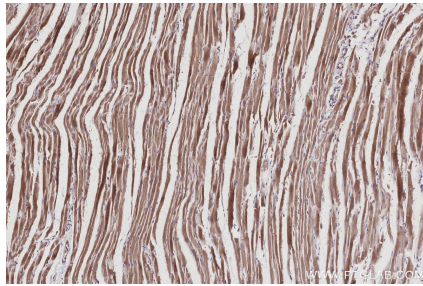
Synonyms

Rab 9 like protein, Rab 9L, RAB9L, Rab-9L, Rab-9-like protein

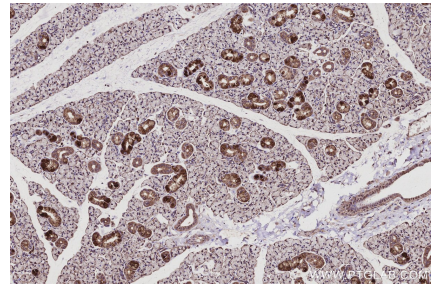
Selected Validation Data



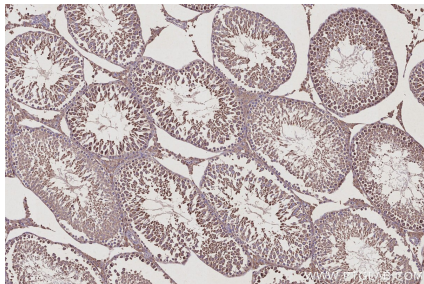
Immunohistochemical analysis of paraffin-embedded mouse heart tissue slide using KHC2936 (RAB9B IHC Kit).



Immunohistochemical analysis of paraffin-embedded rat heart tissue slide using KHC2936 (RAB9B IHC Kit).



Immunohistochemical analysis of paraffin-embedded rat salivary gland tissue slide using KHC2936 (RAB9B IHC Kit).



Immunohistochemical analysis of paraffin-embedded rat testis tissue slide using KHC2936 (RAB9B IHC Kit).