

IHCeasy[®] CYP26B1 Ready-To-Use IHC Kit

Catalog Number: **KHC2947**

General Information

Sample type:
FFPE tissue
Cited sample type:
Reactivity:
Human, Mouse
Cited Reactivity:

Assay type:
Immunohistochemistry
Primary antibody type:
Rabbit Polyclonal
Secondary antibody type:
Polymer-HRP-Goat anti-Rabbit

Kit Component

Component	Size	Concentration
Antigen Retrieval Buffer	100 mL	50×
Washing Buffer	100 mL ×2	20×
Blocking Buffer	5 mL	RTU
Primary Antibody	5 mL	RTU
Secondary Antibody	5 mL	RTU
Chromogen Component A	0.2 mL	RTU
Chromogen Component B	4 mL	RTU
Signal Enhancer	5 mL	RTU
Counter Staining Reagent	5 mL	RTU
Mounting Media	5 mL	RTU
Control Slide	1 slide (Optional)	FFPE
Datasheet	1 Copy	
Manual	1 Copy	

Storage Instructions

All the reagents are stored at 2-8°C. The kit is stable for 6 months from the date of receipt.

Background

CYP26B1(Cytochrome P450 26B1) is involved in the metabolism of retinoic acid (RA), rendering this classical morphogen inactive through oxidation. It has 3 isoforms produced by alternative splicing. Cyp26b1 deficiency induces pronounced apoptosis in the developing limb and delayed chondrocyte maturation. Defects in CYP26B1 are the cause of radiohumeral fusions with other skeletal and craniofacial anomalies (RHFA).

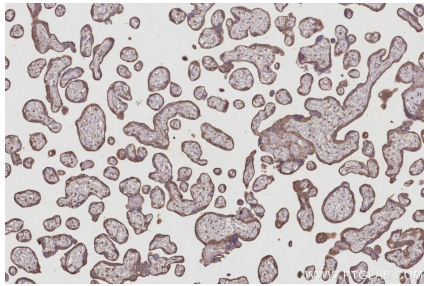
Synonyms

CYP26A2, Cytochrome P450 26A2, Cytochrome P450 26B1, Cytochrome P450 retinoic acid-inactivating 2, Cytochrome P450RAI 2

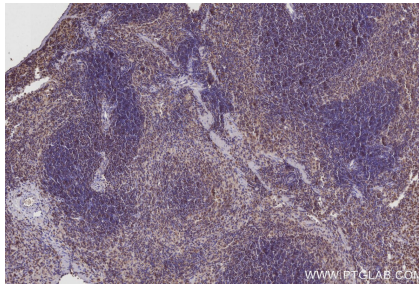
For technical support and original validation data for this product please contact:
T: 1 (888) 4PTGLAB (1-888-478-4522) (toll free in USA), or 1(312) 455-8498 (outside USA)
E: proteintech@ptglab.com
W: ptglab.com

This product is exclusively available under Proteintech Group brand and is not available to purchase from any other manufacturer.

Selected Validation Data



Immunohistochemical analysis of paraffin-embedded human placenta tissue slide using KHC2947 (CYP26B1 IHC Kit).



Immunohistochemical analysis of paraffin-embedded mouse spleen tissue slide using KHC2947 (CYP26B1 IHC Kit).