

IHCeasy[®] ST7 Ready-To-Use IHC Kit

Catalog Number: **KHC2949**

General Information

Sample type:
FFPE tissue
Cited sample type:
Reactivity:
Human, Mouse, Rat
Cited Reactivity:

Assay type:
Immunohistochemistry
Primary antibody type:
Rabbit Polyclonal
Secondary antibody type:
Polymer-HRP-Goat anti-Rabbit

Kit Component

Component	Size	Concentration
Antigen Retrieval Buffer	100 mL	50×
Washing Buffer	100 mL ×2	20×
Blocking Buffer	5 mL	RTU
Primary Antibody	5 mL	RTU
Secondary Antibody	5 mL	RTU
Chromogen Component A	0.2 mL	RTU
Chromogen Component B	4 mL	RTU
Signal Enhancer	5 mL	RTU
Counter Staining Reagent	5 mL	RTU
Mounting Media	5 mL	RTU
Control Slide	1 slide (Optional)	FFPE
Datasheet	1 Copy	
Manual	1 Copy	

Storage Instructions

All the reagents are stored at 2-8°C. The kit is stable for 6 months from the date of receipt.

Background

Human ST7 (suppressor of tumorigenicity 7) gene, also called FAM4A1, HELG or RAY1, maps to a region on chromosome 7 identified as an autism-susceptibility locus. ST7 has been proposed to be a tumor suppressor gene with highest expression in heart, liver and pancreas. The product of this gene is a multi-pass membrane protein belonging to the ST7 family, full-length ST7 cDNA has been cloned and verified in cancer cell lines, recent result suggests that ST7 may mediate tumor suppression through the regulation of the genes involved in maintaining the cellular structure of the cell and involved in oncogenic pathways.

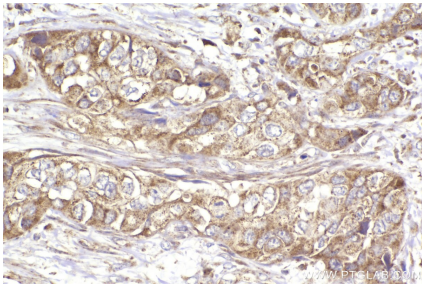
Synonyms

FAM4A, FAM4A1, RAY1, SEN4, TSG7

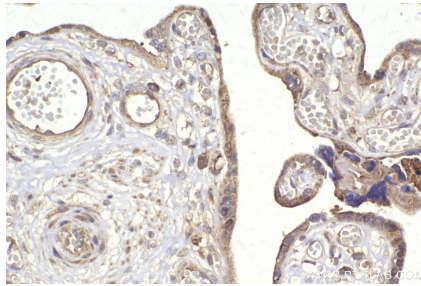
For technical support and original validation data for this product please contact:
T: 1 (888) 4PTGLAB (1-888-478-4522) (toll free in USA), or 1(312) 455-8498 (outside USA)
E: proteintech@ptglab.com
W: ptglab.com

This product is exclusively available under Proteintech Group brand and is not available to purchase from any other manufacturer.

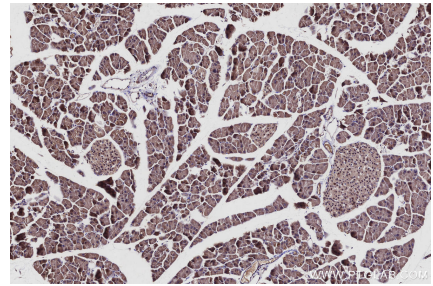
Selected Validation Data



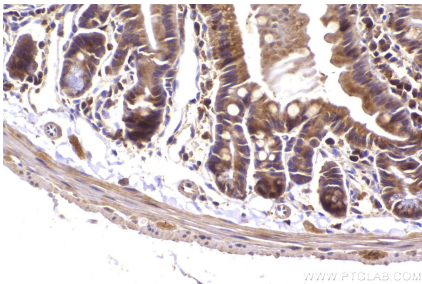
Immunohistochemical analysis of paraffin-embedded human pancreas cancer tissue slide using KHC2949 (ST7 IHC Kit).



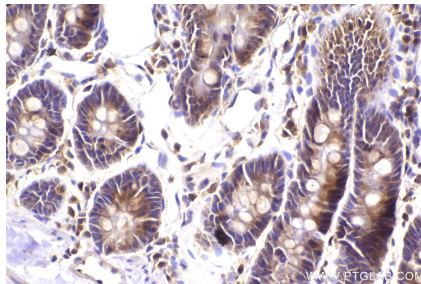
Immunohistochemical analysis of paraffin-embedded human placenta tissue slide using KHC2949 (ST7 IHC Kit).



Immunohistochemical analysis of paraffin-embedded mouse pancreas tissue slide using KHC2949 (ST7 IHC Kit).



Immunohistochemical analysis of paraffin-embedded mouse small intestine tissue slide using KHC2949 (ST7 IHC Kit).



Immunohistochemical analysis of paraffin-embedded rat small intestine tissue slide using KHC2949 (ST7 IHC Kit).