

# IHC*easy* KIF15 Ready-To-Use IHC Kit

Catalog Number: **KHC2951**

## General Information

Sample type:  
FFPE tissue  
Cited sample type:  
Reactivity:  
Human, Mouse, Rat  
Cited Reactivity:

Assay type:  
Immunohistochemistry  
Primary antibody type:  
Rabbit Polyclonal  
Secondary antibody type:  
Polymer-HRP-Goat anti-Rabbit

## Kit Component

Component	Size	Concentration
Antigen Retrieval Buffer	100 mL	50×
Washing Buffer	100 mL ×2	20×
Blocking Buffer	5 mL	RTU
Primary Antibody	5 mL	RTU
Secondary Antibody	5 mL	RTU
Chromogen Component A	0.2 mL	RTU
Chromogen Component B	4 mL	RTU
Signal Enhancer	5 mL	RTU
Counter Staining Reagent	5 mL	RTU
Mounting Media	5 mL	RTU
Control Slide	1 slide (Optional)	FFPE
Datasheet	1 Copy	
Manual	1 Copy	

## Storage Instructions

All the reagents are stored at 2-8°C. The kit is stable for 6 months from the date of receipt.

## Background

KIF15, also named as KLP2 and KNXL7, belongs to the kinesin-like protein family and KLP2 subfamily. It is a plus-end directed kinesin-like motor enzyme which involved in mitotic spindle assembly. It is located in the cytoplasm and biased expression in testis. It is known that KIF15 participates in important events during neuronal development and involves multiple cellular processes such as proliferation, apoptosis, and differentiation. There is emerging evidence indicating that KIF15 plays an important role in several malignancies including pancreatic cancer, hepatocellular carcinoma, and breast cancer.

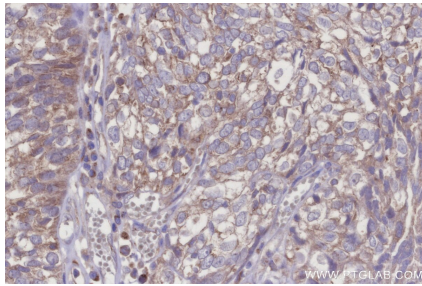
## Synonyms

hKLP2, Kinesin-like protein 2, Kinesin-like protein 7, Kinesin-like protein KIF15, KLP2

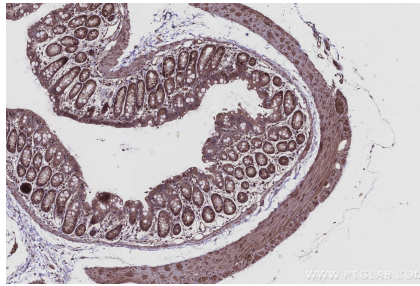
For technical support and original validation data for this product please contact:  
T: 1 (888) 4PTGLAB (1-888-478-4522) (toll free in USA), or 1(312) 455-8498 (outside USA)  
E: [proteintech@ptglab.com](mailto:proteintech@ptglab.com)  
W: [ptglab.com](http://ptglab.com)

This product is exclusively available under Proteintech Group brand and is not available to purchase from any other manufacturer.

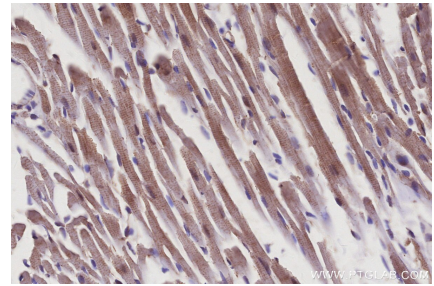
## Selected Validation Data



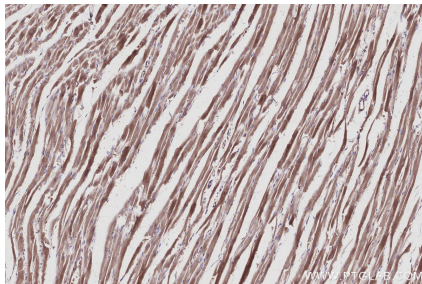
Immunohistochemical analysis of paraffin-embedded human ovary cancer tissue slide using KHC2951 (KIF15 IHC Kit).



Immunohistochemical analysis of paraffin-embedded mouse colon tissue slide using KHC2951 (KIF15 IHC Kit).



Immunohistochemical analysis of paraffin-embedded mouse heart tissue slide using KHC2951 (KIF15 IHC Kit).



Immunohistochemical analysis of paraffin-embedded rat heart tissue slide using KHC2951 (KIF15 IHC Kit).