

IHCeasy[®] FIRRM/C1orf112 Ready-To-Use IHC Kit

Catalog Number: **KHC2952**

General Information

Sample type:
FFPE tissue
Cited sample type:
Reactivity:
Human
Cited Reactivity:

Assay type:
Immunohistochemistry
Primary antibody type:
Rabbit Polyclonal
Secondary antibody type:
Polymer-HRP-Goat anti-Rabbit

Kit Component

Component	Size	Concentration
Antigen Retrieval Buffer	100 mL	50×
Washing Buffer	100 mL ×2	20×
Blocking Buffer	5 mL	RTU
Primary Antibody	5 mL	RTU
Secondary Antibody	5 mL	RTU
Chromogen Component A	0.2 mL	RTU
Chromogen Component B	4 mL	RTU
Signal Enhancer	5 mL	RTU
Counter Staining Reagent	5 mL	RTU
Mounting Media	5 mL	RTU
Control Slide	1 slide (Optional)	FFPE
Datasheet	1 Copy	
Manual	1 Copy	

Storage Instructions

All the reagents are stored at 2-8°C. The kit is stable for 6 months from the date of receipt.

Background

FIRRM (Fanconi anemia pathway and RAD51-mediated DNA repair regulator, also known as C1orf112 or FLIP) is an evolutionarily conserved protein involved in DNA damage repair and homologous recombination. It ensures DNA cross-link (ICL) repair and genomic stability by regulating RAD51 activity. FIRRM expression is upregulated in a variety of tumors and correlates with poor prognosis. Its dysfunction leads to increased genomic instability, as evidenced by enhanced DNA damage signaling, chromosomal abnormalities, and micronucleus formation. The study of FIRRM is important for understanding the mechanisms of tumorigenesis and developing new therapeutic strategies.

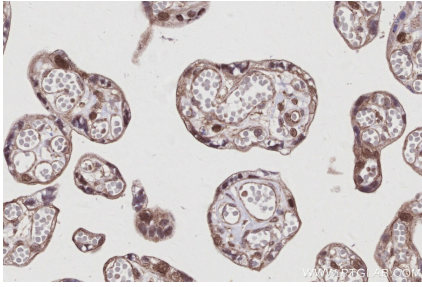
Synonyms

C1orf112, APOLO1, FIDGETIN-like-1 interacting protein, FIGNL1 Interacting Regulator Of Recombination And Mitosis, FIGNL1-interacting regulator of recombination and mitosis

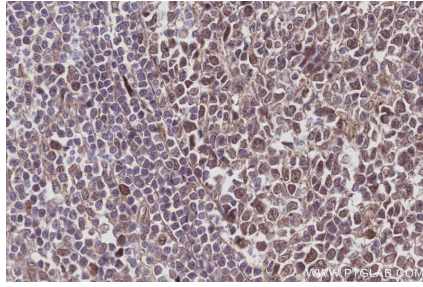
For technical support and original validation data for this product please contact:
T: 1 (888) 4PTGLAB (1-888-478-4522) (toll free in USA), or 1(312) 455-8498 (outside USA)
E: proteintech@ptglab.com
W: ptglab.com

This product is exclusively available under Proteintech Group brand and is not available to purchase from any other manufacturer.

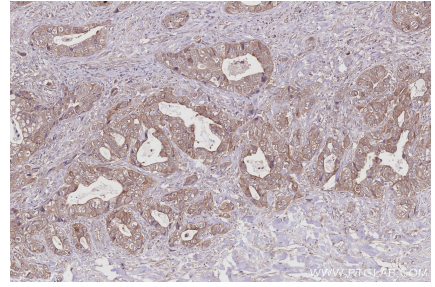
Selected Validation Data



Immunohistochemical analysis of paraffin-embedded human placenta tissue slide using KHC2952 (FIRRM/C1orf112 IHC Kit).



Immunohistochemical analysis of paraffin-embedded human appendicitis tissue slide using KHC2952 (FIRRM/C1orf112 IHC Kit).



Immunohistochemical analysis of paraffin-embedded human pancreas cancer tissue slide using KHC2952 (FIRRM/C1orf112 IHC Kit).