

# IHCeasy<sup>®</sup> RPS6KB2 Ready-To-Use IHC Kit

Catalog Number: **KHC3001**

## General Information

Sample type:  
FFPE tissue  
Cited sample type:  
Reactivity:  
Human, Mouse, Rat  
Cited Reactivity:

Assay type:  
Immunohistochemistry  
Primary antibody type:  
Rabbit Polyclonal  
Secondary antibody type:  
Polymer-HRP-Goat anti-Rabbit

## Kit Component

Component	Size	Concentration
Antigen Retrieval Buffer	100 mL	50×
Washing Buffer	100 mL ×2	20×
Blocking Buffer	5 mL	RTU
Primary Antibody	5 mL	RTU
Secondary Antibody	5 mL	RTU
Chromogen Component A	0.2 mL	RTU
Chromogen Component B	4 mL	RTU
Signal Enhancer	5 mL	RTU
Counter Staining Reagent	5 mL	RTU
Mounting Media	5 mL	RTU
Control Slide	1 slide (Optional)	FFPE
Datasheet	1 Copy	
Manual	1 Copy	

## Storage Instructions

All the reagents are stored at 2-8°C. The kit is stable for 6 months from the date of receipt.

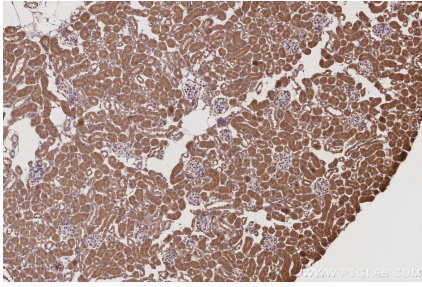
## Background

RPS6KB2(ribosomal protein S6 kinase beta-2) is also named as 70 kDa ribosomal protein S6 kinase 2(P70S6K2),Serine/threonine-protein kinase 14B(STK14B) and belongs to the protein kinase superfamily. It is activated by mitogenic stimuli, including growth factors, cytokines, and phorbol esters. The activated enzyme phosphorylates several serine residues in the C terminus of ribosomal protein S6.

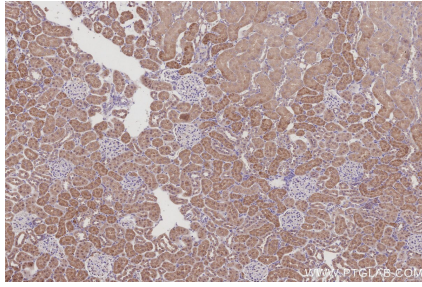
## Synonyms

p70 S6 kinase beta, S6K2, EC:2.7.11.1, KLS, P70 beta

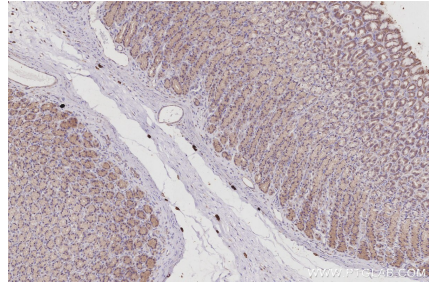
## Selected Validation Data



Immunohistochemical analysis of paraffin-embedded mouse kidney tissue slide using KHC3001 (RPS6KB2 IHC Kit).



Immunohistochemical analysis of paraffin-embedded rat kidney tissue slide using KHC3001 (RPS6KB2 IHC Kit).



Immunohistochemical analysis of paraffin-embedded rat stomach tissue slide using KHC3001 (RPS6KB2 IHC Kit).