

# IHCeasy<sup>®</sup> DCDC2 Ready-To-Use IHC Kit

Catalog Number: **KHC3009**

## General Information

Sample type:  
FFPE tissue  
Cited sample type:  
Reactivity:  
Human  
Cited Reactivity:

Assay type:  
Immunohistochemistry  
Primary antibody type:  
Rabbit Polyclonal  
Secondary antibody type:  
Polymer-HRP-Goat anti-Rabbit

## Kit Component

Component	Size	Concentration
Antigen Retrieval Buffer	100 mL	50×
Washing Buffer	100 mL ×2	20×
Blocking Buffer	5 mL	RTU
Primary Antibody	5 mL	RTU
Secondary Antibody	5 mL	RTU
Chromogen Component A	0.2 mL	RTU
Chromogen Component B	4 mL	RTU
Signal Enhancer	5 mL	RTU
Counter Staining Reagent	5 mL	RTU
Mounting Media	5 mL	RTU
Control Slide	1 slide (Optional)	FFPE
Datasheet	1 Copy	
Manual	1 Copy	

## Storage Instructions

All the reagents are stored at 2-8°C. The kit is stable for 6 months from the date of receipt.

## Background

DCDC2 (Doublecortin domain-containing protein 2), also known as KIAA1154. DCDC2 is expressed in the central nervous system of adults and fetuses, especially in the olfactory cortex, inferior temporal cortex, medial temporal cortex, hypothalamus, amygdala and hippocampus. DCDC2 protein contains two dicortical protein domains that bind to microtubules and enhance microtubule polymerization, which may play a role in neuronal migration and affect the signal transduction of primary cilia. In addition, DCDC2 also plays a role in inhibiting classical WNT signaling. DCDC2 may affect the development and function of the brain by affecting the migration of neurons and the signal conduction of primary cilia, and then it is related to reading ability.

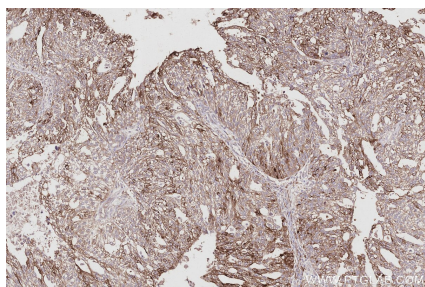
## Synonyms

DCDC2A, Doublecortin domain-containing protein 2, Protein RU2S, RU2, RU2S

For technical support and original validation data for this product please contact:  
T: 1 (888) 4PTGLAB (1-888-478-4522) (toll free in USA), or 1(312) 455-8498 (outside USA)  
E: [proteintech@ptglab.com](mailto:proteintech@ptglab.com)  
W: [ptglab.com](http://ptglab.com)

This product is exclusively available under Proteintech Group brand and is not available to purchase from any other manufacturer.

## Selected Validation Data



Immunohistochemical analysis of paraffin-embedded human ovary cancer tissue slide using KHC3009 (DCDC2 IHC Kit).