

IHCeasy[®] SERTAD1 Ready-To-Use IHC Kit

Catalog Number: **KHC3011**

General Information

Sample type:
FFPE tissue
Cited sample type:
Reactivity:
Human, Mouse
Cited Reactivity:

Assay type:
Immunohistochemistry
Primary antibody type:
Rabbit Polyclonal
Secondary antibody type:
Polymer-HRP-Goat anti-Rabbit

Kit Component

Component	Size	Concentration
Antigen Retrieval Buffer	100 mL	50×
Washing Buffer	100 mL × 2	20×
Blocking Buffer	5 mL	RTU
Primary Antibody	5 mL	RTU
Secondary Antibody	5 mL	RTU
Chromogen Component A	0.2 mL	RTU
Chromogen Component B	4 mL	RTU
Signal Enhancer	5 mL	RTU
Counter Staining Reagent	5 mL	RTU
Mounting Media	5 mL	RTU
Control Slide	1 slide (Optional)	FFPE
Datasheet	1 Copy	
Manual	1 Copy	

Storage Instructions

All the reagents are stored at 2-8°C. The kit is stable for 6 months from the date of receipt.

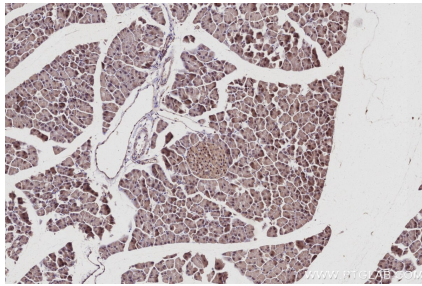
Background

SERTA domain containing 1 (SERTAD1, synonyms: SEI1, TRIP-Br1) protein is a cyclin-dependent kinase 4 (cdk4)-binding protein and acts as a growth factor sensor and facilitates the formation and activation of cyclin D-CDK complexes in the face of inhibitory levels of INK4 proteins, therefore, antagonizes the activity of p16(INK4a) tumor suppressor. SERTAD1 also suppresses CREB-mediated transcription and regulates cell cycle progression through sequential effects on the transcriptional activity of E2F-responsive promoters during G(1) and S phases.

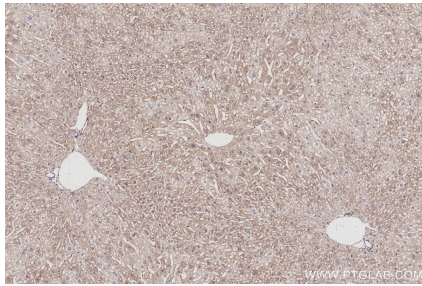
Synonyms

SEI 1, SEI1, SEI-1, SERTA domain-containing protein 1, SERTAD 1

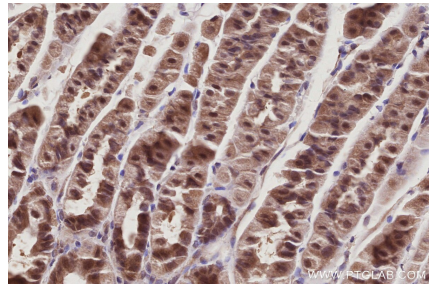
Selected Validation Data



Immunohistochemical analysis of paraffin-embedded mouse pancreas tissue slide using KHC3011 (SERTAD1 IHC Kit).



Immunohistochemical analysis of paraffin-embedded mouse liver tissue slide using KHC3011 (SERTAD1 IHC Kit).



Immunohistochemical analysis of paraffin-embedded mouse stomach tissue slide using KHC3011 (SERTAD1 IHC Kit).