

IHCeasy[®] BAZ1B/WSTF Ready-To-Use IHC Kit

Catalog Number: **KHC3013**

General Information

Sample type:
FFPE tissue
Cited sample type:
Reactivity:
Human, Mouse, Rat
Cited Reactivity:

Assay type:
Immunohistochemistry
Primary antibody type:
Rabbit Polyclonal
Secondary antibody type:
Polymer-HRP-Goat anti-Rabbit

Kit Component

Component	Size	Concentration
Antigen Retrieval Buffer	100 mL	50×
Washing Buffer	100 mL ×2	20×
Blocking Buffer	5 mL	RTU
Primary Antibody	5 mL	RTU
Secondary Antibody	5 mL	RTU
Chromogen Component A	0.2 mL	RTU
Chromogen Component B	4 mL	RTU
Signal Enhancer	5 mL	RTU
Counter Staining Reagent	5 mL	RTU
Mounting Media	5 mL	RTU
Control Slide	1 slide (Optional)	FFPE
Datasheet	1 Copy	
Manual	1 Copy	

Storage Instructions

All the reagents are stored at 2-8°C. The kit is stable for 6 months from the date of receipt.

Background

Tyrosine-protein kinase BAZ1B, also named WSTF, plays a central role in chromatin remodeling and acts as a transcription regulator. It involved in DNA damage response by phosphorylating 'Tyr-142' of histone H2AX (H2AXY142ph).

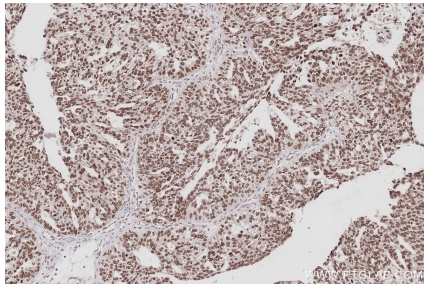
Synonyms

BAZ1B, WSTF, EC:2.7.10.2, hWALp2, Tyrosine protein kinase BAZ1B

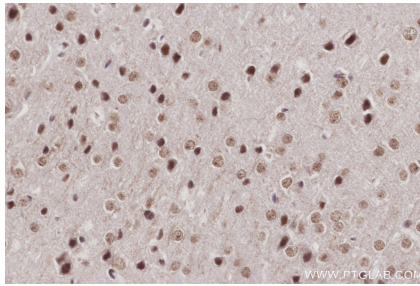
For technical support and original validation data for this product please contact:
T: 1 (888) 4PTGLAB (1-888-478-4522) (toll free in USA), or 1(312) 455-8498 (outside USA)
E: proteintech@ptglab.com
W: ptglab.com

This product is exclusively available under Proteintech Group brand and is not available to purchase from any other manufacturer.

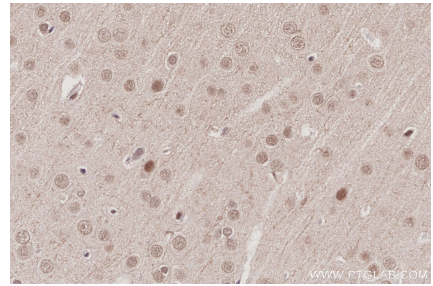
Selected Validation Data



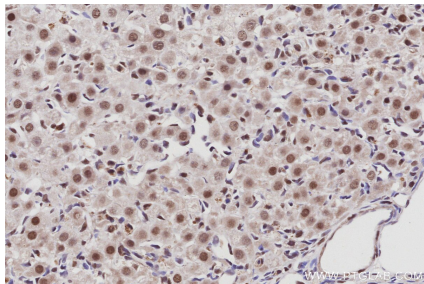
Immunohistochemical analysis of paraffin-embedded human ovary cancer tissue slide using KHC3013 (BAZ1B/WSTF IHC Kit).



Immunohistochemical analysis of paraffin-embedded mouse brain tissue slide using KHC3013 (BAZ1B/WSTF IHC Kit).



Immunohistochemical analysis of paraffin-embedded rat brain tissue slide using KHC3013 (BAZ1B/WSTF IHC Kit).



Immunohistochemical analysis of paraffin-embedded rat ovary tissue slide using KHC3013 (BAZ1B/WSTF IHC Kit).