

IHCeasy[®] RABGEF1 Ready-To-Use IHC Kit

Catalog Number: **KHC3015**

General Information

Sample type:
FFPE tissue
Cited sample type:
Reactivity:
Human, Mouse, Rat
Cited Reactivity:

Assay type:
Immunohistochemistry
Primary antibody type:
Rabbit Polyclonal
Secondary antibody type:
Polymer-HRP-Goat anti-Rabbit

Kit Component

Component	Size	Concentration
Antigen Retrieval Buffer	100 mL	50×
Washing Buffer	100 mL ×2	20×
Blocking Buffer	5 mL	RTU
Primary Antibody	5 mL	RTU
Secondary Antibody	5 mL	RTU
Chromogen Component A	0.2 mL	RTU
Chromogen Component B	4 mL	RTU
Signal Enhancer	5 mL	RTU
Counter Staining Reagent	5 mL	RTU
Mounting Media	5 mL	RTU
Control Slide	1 slide (Optional)	FFPE
Datasheet	1 Copy	
Manual	1 Copy	

Storage Instructions

All the reagents are stored at 2-8°C. The kit is stable for 6 months from the date of receipt.

Background

RabGEF1 (Rabex-5) is a guanine nucleotide exchange factor (GEF) for the endocytic pathway regulator Rab5. RabGEF1 contains a Vps9 domain, an A20-like zinc finger (ZnF) domain, and a coiled coil domain. RabGEF1 is involved in endocytic membrane fusion and membrane trafficking of recycling endosomes. It is also implicated in tumorigenesis and in the development of certain human cancers.

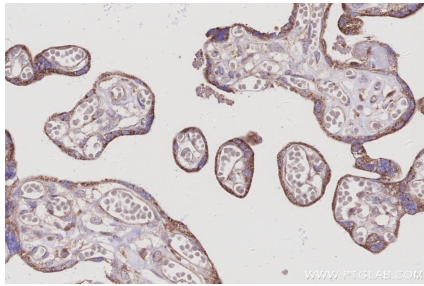
Synonyms

Rab5 GDP/GTP exchange factor, Rabaptin-5-associated exchange factor for Rab5, RABEX5, Rabex-5, RAP1

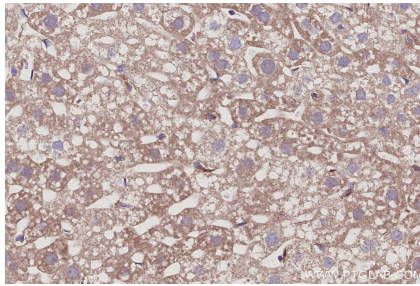
For technical support and original validation data for this product please contact:
T: 1 (888) 4PTGLAB (1-888-478-4522) (toll free in USA), or 1(312) 455-8498 (outside USA)
E: proteintech@ptglab.com
W: ptglab.com

This product is exclusively available under Proteintech Group brand and is not available to purchase from any other manufacturer.

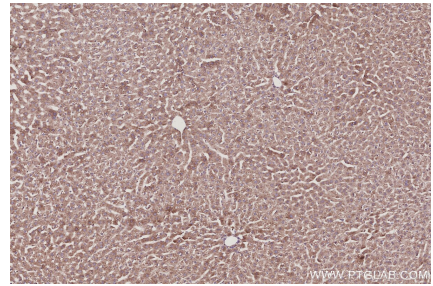
Selected Validation Data



Immunohistochemical analysis of paraffin-embedded human placenta tissue slide using KHC3015 (RABGEF1 IHC Kit).



Immunohistochemical analysis of paraffin-embedded mouse liver tissue slide using KHC3015 (RABGEF1 IHC Kit).



Immunohistochemical analysis of paraffin-embedded rat liver tissue slide using KHC3015 (RABGEF1 IHC Kit).