

# IHCeasy<sup>®</sup> TUBD1 Ready-To-Use IHC Kit

Catalog Number: **KHC3018**

## General Information

Sample type:  
FFPE tissue  
Cited sample type:  
Reactivity:  
Human, Mouse, Rat  
Cited Reactivity:

Assay type:  
Immunohistochemistry  
Primary antibody type:  
Rabbit Polyclonal  
Secondary antibody type:  
Polymer-HRP-Goat anti-Rabbit

## Kit Component

Component	Size	Concentration
Antigen Retrieval Buffer	100 mL	50×
Washing Buffer	100 mL ×2	20×
Blocking Buffer	5 mL	RTU
Primary Antibody	5 mL	RTU
Secondary Antibody	5 mL	RTU
Chromogen Component A	0.2 mL	RTU
Chromogen Component B	4 mL	RTU
Signal Enhancer	5 mL	RTU
Counter Staining Reagent	5 mL	RTU
Mounting Media	5 mL	RTU
Control Slide	1 slide (Optional)	FFPE
Datasheet	1 Copy	
Manual	1 Copy	

## Storage Instructions

All the reagents are stored at 2-8°C. The kit is stable for 6 months from the date of receipt.

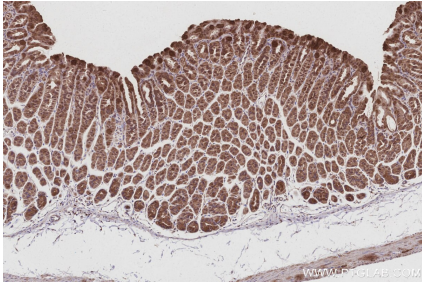
## Background

TUBD1, also named as TUBD, Tubulin delta chain, tubulin delta 1. The TUBD1 gene encodes a centrosomal protein of 453-amino acids with a molecular mass of 51 kD containing the canonical GTP-binding domain shared with other tubulins. TUBD1 mRNA is preferentially expressed in the sperm head, but it has been also detected in retina, heart, muscle, thyroid, ovary, and colon, among other tissues.

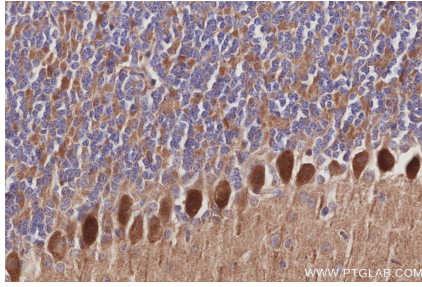
## Synonyms

Delta tubulin, Delta-tubulin, TUBD, Tubulin delta chain, tubulin, delta 1

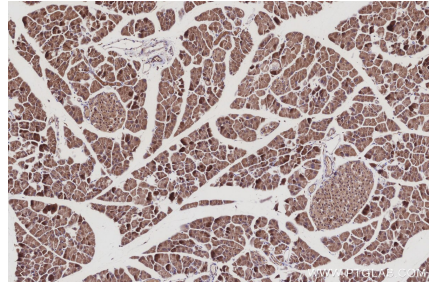
## Selected Validation Data



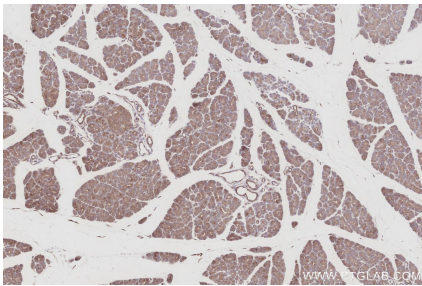
Immunohistochemical analysis of paraffin-embedded mouse stomach tissue slide using KHC3018 (TUBD1 IHC Kit).



Immunohistochemical analysis of paraffin-embedded mouse cerebellum tissue slide using KHC3018 (TUBD1 IHC Kit).



Immunohistochemical analysis of paraffin-embedded mouse pancreas tissue slide using KHC3018 (TUBD1 IHC Kit).



Immunohistochemical analysis of paraffin-embedded rat pancreas tissue slide using KHC3018 (TUBD1 IHC Kit).