

IHCeasy[®] Fetuin-B Ready-To-Use IHC Kit

Catalog Number: **KHC3025**

General Information

Sample type:
FFPE tissue
Cited sample type:
Reactivity:
Human, Mouse, Rat
Cited Reactivity:

Assay type:
Immunohistochemistry
Primary antibody type:
Mouse Monoclonal
Secondary antibody type:
Polymer-HRP-Goat anti-Mouse

Kit Component

| Component | Size | Concentration |
|--------------------------|--------------------|---------------|
| Antigen Retrieval Buffer | 100 mL | 50× |
| Washing Buffer | 100 mL ×2 | 20× |
| Blocking Buffer | 5 mL | RTU |
| Primary Antibody | 5 mL | RTU |
| Secondary Antibody | 5 mL | RTU |
| Chromogen Component A | 0.2 mL | RTU |
| Chromogen Component B | 4 mL | RTU |
| Signal Enhancer | 5 mL | RTU |
| Counter Staining Reagent | 5 mL | RTU |
| Mounting Media | 5 mL | RTU |
| Control Slide | 1 slide (Optional) | FFPE |
| Datasheet | 1 Copy | |
| Manual | 1 Copy | |

Storage Instructions

All the reagents are stored at 2-8°C. The kit is stable for 6 months from the date of receipt.

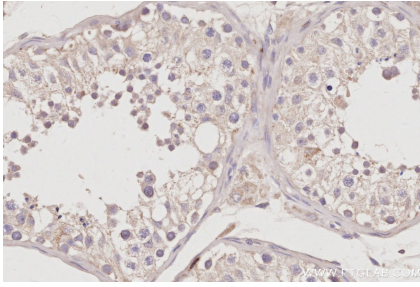
Background

Fetuin A and B are both members of the cystatin superfamily. They are mainly expressed in the liver (hepatokines), as well as other tissues such as the kidneys, tongue, and placenta. Fetuin-B has been identified as a novel adipokine/hepatokine that significantly increases hepatic steatosis and mediates impaired insulin action and glucose intolerance.

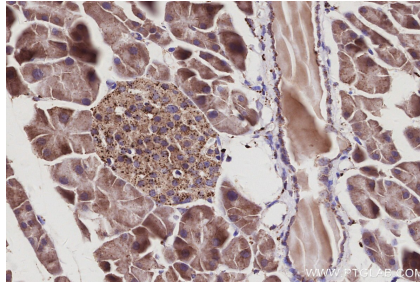
Synonyms

FETUB, 16G2, fetuin B, FetuinB, Fetuin-like protein IRL685

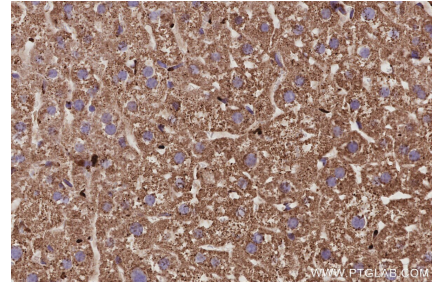
Selected Validation Data



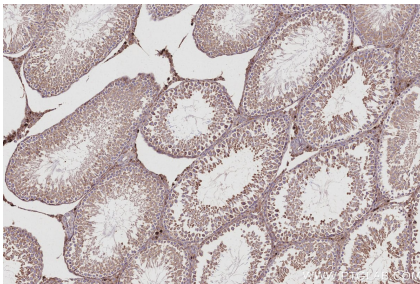
Immunohistochemical analysis of paraffin-embedded human testis tissue slide using KHC3025 (Fetuin-B IHC Kit).



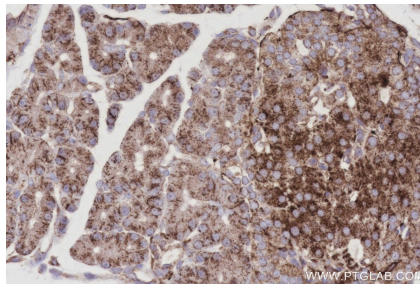
Immunohistochemical analysis of paraffin-embedded mouse pancreas tissue slide using KHC3025 (Fetuin-B IHC Kit).



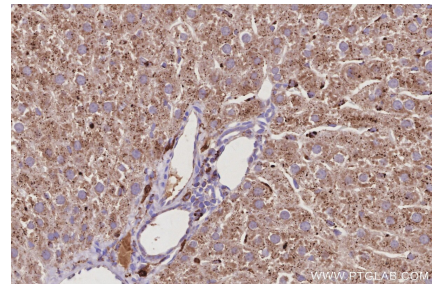
Immunohistochemical analysis of paraffin-embedded mouse liver tissue slide using KHC3025 (Fetuin-B IHC Kit).



Immunohistochemical analysis of paraffin-embedded rat testis tissue slide using KHC3025 (Fetuin-B IHC Kit).



Immunohistochemical analysis of paraffin-embedded rat pancreas tissue slide using KHC3025 (Fetuin-B IHC Kit).



Immunohistochemical analysis of paraffin-embedded rat liver tissue slide using KHC3025 (Fetuin-B IHC Kit).