

# IHCeasy<sup>®</sup> WASF3 Ready-To-Use IHC Kit

Catalog Number: **KHC3048**

## General Information

Sample type:  
FFPE tissue  
Cited sample type:  
Reactivity:  
Human, Mouse, Rat  
Cited Reactivity:

Assay type:  
Immunohistochemistry  
Primary antibody type:  
Mouse Monoclonal  
Secondary antibody type:  
Polymer-HRP-Goat anti-Mouse

## Kit Component

Component	Size	Concentration
Antigen Retrieval Buffer	100 mL	50×
Washing Buffer	100 mL ×2	20×
Blocking Buffer	5 mL	RTU
Primary Antibody	5 mL	RTU
Secondary Antibody	5 mL	RTU
Chromogen Component A	0.2 mL	RTU
Chromogen Component B	4 mL	RTU
Signal Enhancer	5 mL	RTU
Counter Staining Reagent	5 mL	RTU
Mounting Media	5 mL	RTU
Control Slide	1 slide (Optional)	FFPE
Datasheet	1 Copy	
Manual	1 Copy	

## Storage Instructions

All the reagents are stored at 2-8°C. The kit is stable for 6 months from the date of receipt.

## Background

WASF3, also named WAVE3 or SCAR3, belongs to the SCAR/WAVE family. It plays a role in the regulation of cell morphology and cytoskeletal organization. WASF3 is associated with movement, invasion, and metastasis in different cancers such as breast cancer, gastric cancer, and prostate cancer. It has been shown that WASF3 levels are elevated in advanced-stage cancers compared to lower-grade tumors and normal tissue.

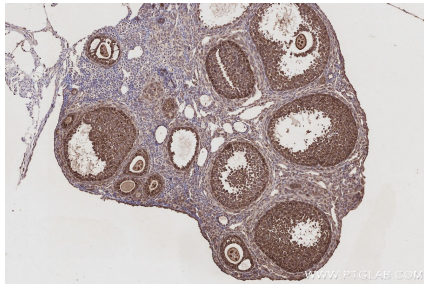
## Synonyms

Actin-binding protein WASF3, Brush 1, KIAA0900, Protein WAVE 3, Protein WAVE-3

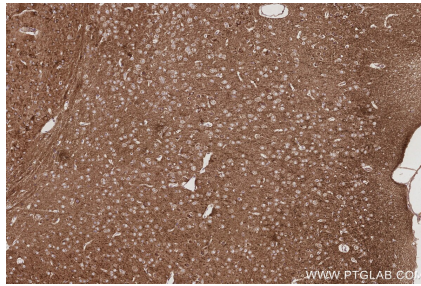
For technical support and original validation data for this product please contact:  
T: 1 (888) 4PTGLAB (1-888-478-4522) (toll free in USA), or 1(312) 455-8498 (outside USA)  
E: [proteintech@ptglab.com](mailto:proteintech@ptglab.com)  
W: [ptglab.com](http://ptglab.com)

This product is exclusively available under Proteintech Group brand and is not available to purchase from any other manufacturer.

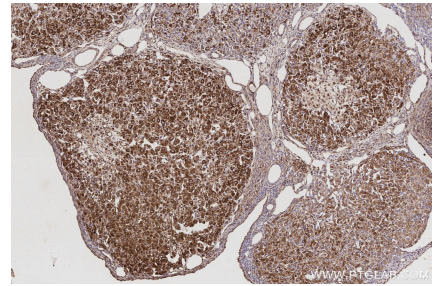
## Selected Validation Data



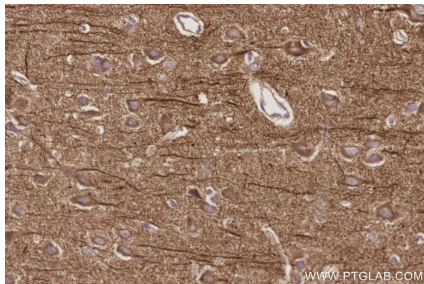
Immunohistochemical analysis of paraffin-embedded mouse ovary tissue slide using KHC3048 (WASF3 IHC Kit).



Immunohistochemical analysis of paraffin-embedded mouse brain tissue slide using KHC3048 (WASF3 IHC Kit).



Immunohistochemical analysis of paraffin-embedded rat ovary tissue slide using KHC3048 (WASF3 IHC Kit).



Immunohistochemical analysis of paraffin-embedded rat brain tissue slide using KHC3048 (WASF3 IHC Kit).