

IHCeasy[®] NUDC Ready-To-Use IHC Kit

Catalog Number: **KHC3052**

General Information

Sample type:
FFPE tissue
Cited sample type:
Reactivity:
Human, Mouse, Rat
Cited Reactivity:

Assay type:
Immunohistochemistry
Primary antibody type:
Rabbit Polyclonal
Secondary antibody type:
Polymer-HRP-Goat anti-Rabbit

Kit Component

Component	Size	Concentration
Antigen Retrieval Buffer	100 mL	50×
Washing Buffer	100 mL ×2	20×
Blocking Buffer	5 mL	RTU
Primary Antibody	5 mL	RTU
Secondary Antibody	5 mL	RTU
Chromogen Component A	0.2 mL	RTU
Chromogen Component B	4 mL	RTU
Signal Enhancer	5 mL	RTU
Counter Staining Reagent	5 mL	RTU
Mounting Media	5 mL	RTU
Control Slide	1 slide (Optional)	FFPE
Datasheet	1 Copy	
Manual	1 Copy	

Storage Instructions

All the reagents are stored at 2-8°C. The kit is stable for 6 months from the date of receipt.

Background

Nuclear distribution protein C (NudC) is a highly conserved dynein/dynactin associated protein implicated in mitosis and cytokinesis. NudC is localized on major mitotic structures, and is involved in regulating spindle formation stability of kinetochore microtubule attachments, and chromosomes congression in early mitosis. NudC also is required for multi-protein transport along axons in neurons.

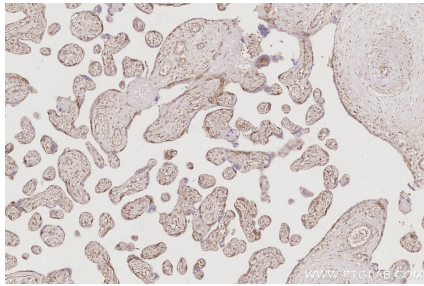
Synonyms

HNUDC, MNUDC

For technical support and original validation data for this product please contact:
T: 1 (888) 4PTGLAB (1-888-478-4522) (toll free in USA), or 1(312) 455-8498 (outside USA)
E: proteintech@ptglab.com
W: ptglab.com

This product is exclusively available under Proteintech Group brand and is not available to purchase from any other manufacturer.

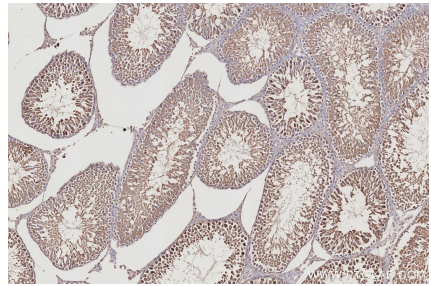
Selected Validation Data



Immunohistochemical analysis of paraffin-embedded human placenta tissue slide using KHC3052 (NUDC IHC Kit).



Immunohistochemical analysis of paraffin-embedded mouse testis tissue slide using KHC3052 (NUDC IHC Kit).



Immunohistochemical analysis of paraffin-embedded rat testis tissue slide using KHC3052 (NUDC IHC Kit).