

IHCeasy[®] SBDS Ready-To-Use IHC Kit

Catalog Number: **KHC3060**

General Information

Sample type:
FFPE tissue
Cited sample type:
Reactivity:
Human, Mouse, Rat
Cited Reactivity:

Assay type:
Immunohistochemistry
Primary antibody type:
Mouse Monoclonal
Secondary antibody type:
Polymer-HRP-Goat anti-Mouse

Kit Component

Component	Size	Concentration
Antigen Retrieval Buffer	100 mL	50×
Washing Buffer	100 mL ×2	20×
Blocking Buffer	5 mL	RTU
Primary Antibody	5 mL	RTU
Secondary Antibody	5 mL	RTU
Chromogen Component A	0.2 mL	RTU
Chromogen Component B	4 mL	RTU
Signal Enhancer	5 mL	RTU
Counter Staining Reagent	5 mL	RTU
Mounting Media	5 mL	RTU
Control Slide	1 slide (Optional)	FFPE
Datasheet	1 Copy	
Manual	1 Copy	

Storage Instructions

All the reagents are stored at 2-8°C. The kit is stable for 6 months from the date of receipt.

Background

Shwachman-Bodian-Diamond syndrome (SBDS) is a member of a highly conserved protein family that exists from archaea to vertebrates and plants. The protein may function in RNA metabolism. Mutations within its gene are associated with Shwachman-Bodian-Diamond syndrome. This gene encodes a member of a highly conserved protein family that exists from archaea to vertebrates and plants. The encoded protein may function in RNA metabolism. Mutations within this gene are associated with Shwachman-Bodian-Diamond syndrome. An alternative transcript has been described, but its biological nature has not been determined.

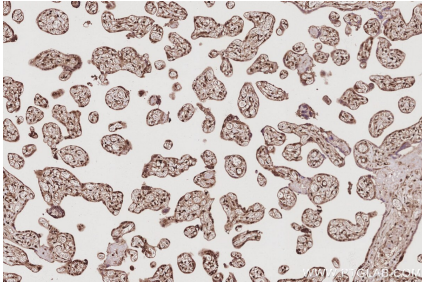
Synonyms

CGI 97, CGI-97, SDS, Shwachman-Bodian-Diamond syndrome protein, SWDS

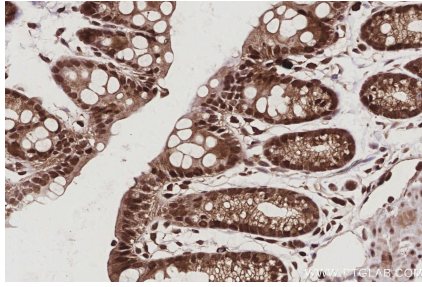
For technical support and original validation data for this product please contact:
T: 1 (888) 4PTGLAB (1-888-478-4522) (toll free in USA), or 1(312) 455-8498 (outside USA)
E: proteintech@ptglab.com
W: ptglab.com

This product is exclusively available under Proteintech Group brand and is not available to purchase from any other manufacturer.

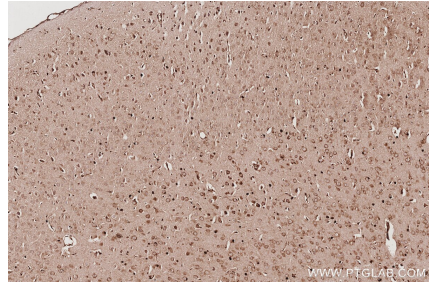
Selected Validation Data



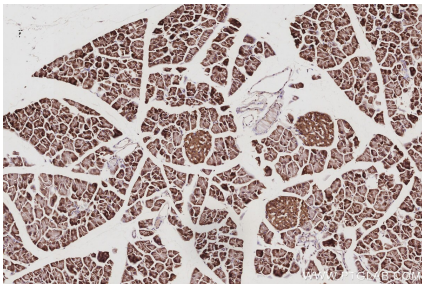
Immunohistochemical analysis of paraffin-embedded human placenta tissue slide using KHC3060 (SBDS IHC Kit).



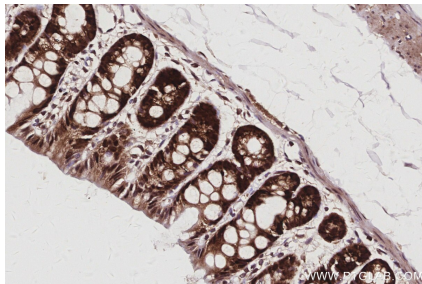
Immunohistochemical analysis of paraffin-embedded mouse colon tissue slide using KHC3060 (SBDS IHC Kit).



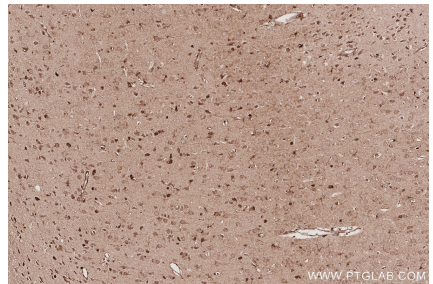
Immunohistochemical analysis of paraffin-embedded mouse brain tissue slide using KHC3060 (SBDS IHC Kit).



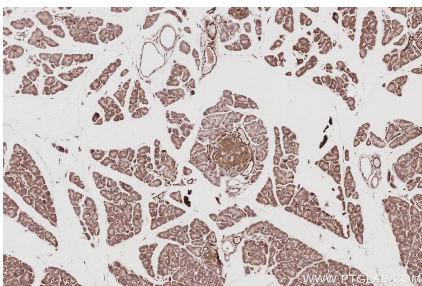
Immunohistochemical analysis of paraffin-embedded mouse pancreas tissue slide using KHC3060 (SBDS IHC Kit).



Immunohistochemical analysis of paraffin-embedded rat colon tissue slide using KHC3060 (SBDS IHC Kit).



Immunohistochemical analysis of paraffin-embedded rat brain tissue slide using KHC3060 (SBDS IHC Kit).



Immunohistochemical analysis of paraffin-embedded rat pancreas tissue slide using KHC3060 (SBDS IHC Kit).