

IHCeasy[®] CD2AP Ready-To-Use IHC Kit

Catalog Number: **KHC3079**

General Information

Sample type:
FFPE tissue
Cited sample type:
Reactivity:
Human, Mouse, Rat
Cited Reactivity:

Assay type:
Immunohistochemistry
Primary antibody type:
Rabbit Polyclonal
Secondary antibody type:
Polymer-HRP-Goat anti-Rabbit

Kit Component

Component	Size	Concentration
Antigen Retrieval Buffer	100 mL	50×
Washing Buffer	100 mL ×2	20×
Blocking Buffer	5 mL	RTU
Primary Antibody	5 mL	RTU
Secondary Antibody	5 mL	RTU
Chromogen Component A	0.2 mL	RTU
Chromogen Component B	4 mL	RTU
Signal Enhancer	5 mL	RTU
Counter Staining Reagent	5 mL	RTU
Mounting Media	5 mL	RTU
Control Slide	1 slide (Optional)	FFPE
Datasheet	1 Copy	
Manual	1 Copy	

Storage Instructions

All the reagents are stored at 2-8°C. The kit is stable for 6 months from the date of receipt.

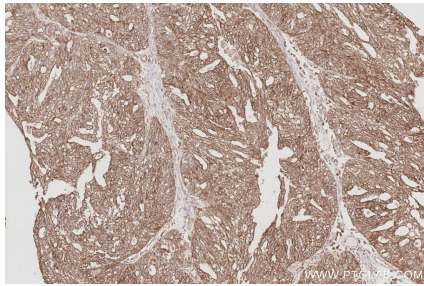
Background

CD2 associated protein (CD2AP, also known as CMS) is a scaffolding molecule that acts as an adapter protein between membrane proteins and the actin cytoskeleton. CD2AP also plays a role in epithelial cell junction formation and affects the pathogenesis of Alzheimer's disease. Its mutations are associated with sporadic nephrotic syndrome and focal segmental glomerulosclerosis (FSGS).

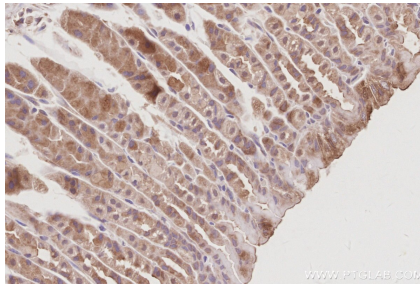
Synonyms

Adapter protein CMS, Cas ligand with multiple SH3 domains, CD2 Associated Protein, CD2-associated protein, CMS

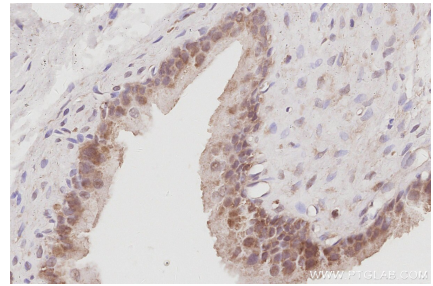
Selected Validation Data



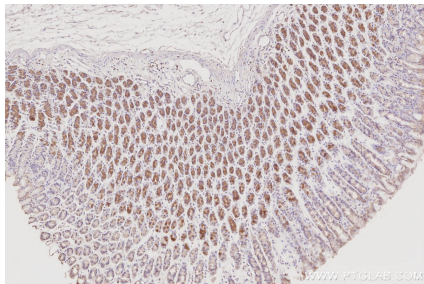
Immunohistochemical analysis of paraffin-embedded human ovary cancer tissue slide using KHC3079 (CD2AP IHC Kit).



Immunohistochemical analysis of paraffin-embedded mouse stomach tissue slide using KHC3079 (CD2AP IHC Kit).



Immunohistochemical analysis of paraffin-embedded rat bladder tissue slide using KHC3079 (CD2AP IHC Kit).



Immunohistochemical analysis of paraffin-embedded rat stomach tissue slide using KHC3079 (CD2AP IHC Kit).