

IHCeasy[®] ARFGEF1 Ready-To-Use IHC Kit

Catalog Number: **KHC3088**

General Information

Sample type:
FFPE tissue

Cited sample type:

Reactivity:
Human, Mouse, Rat

Cited Reactivity:

Assay type:
Immunohistochemistry

Primary antibody type:
Rabbit Polyclonal

Secondary antibody type:
Polymer-HRP-Goat anti-Rabbit

Kit Component

Component	Size	Concentration
Antigen Retrieval Buffer	100 mL	50×
Washing Buffer	100 mL ×2	20×
Blocking Buffer	5 mL	RTU
Primary Antibody	5 mL	RTU
Secondary Antibody	5 mL	RTU
Chromogen Component A	0.2 mL	RTU
Chromogen Component B	4 mL	RTU
Signal Enhancer	5 mL	RTU
Counter Staining Reagent	5 mL	RTU
Mounting Media	5 mL	RTU
Control Slide	1 slide (Optional)	FFPE
Datasheet	1 Copy	
Manual	1 Copy	

Storage Instructions

All the reagents are stored at 2-8°C. The kit is stable for 6 months from the date of receipt.

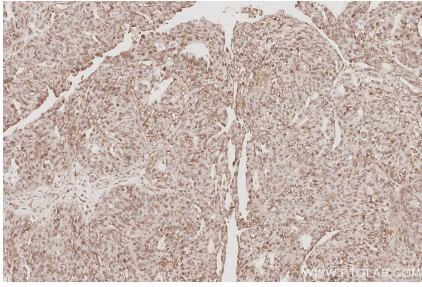
Background

ARFGEF1 (ADP ribosylation factor guanine nucleotide exchange factor 1), also known as BIG1 (Brefeldin A-inhibited guanine nucleotide exchange protein 1), is one of the ADP ribosylation factor (ARF) guanine nucleotide exchange factor (GEF) with a conserved catalytic sec7 domain. ARFGEF1 is connected with trafficking regulation through the trans-Golgi network and endosomes.

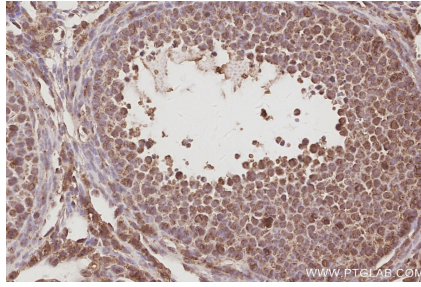
Synonyms

ARFGEP1, BIG1, Brefeldin A inhibited GEP 1, P200, p200 ARF GEP1

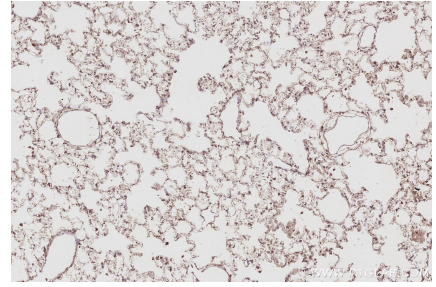
Selected Validation Data



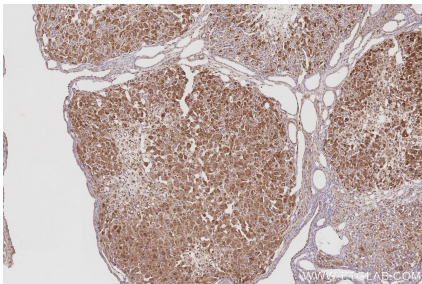
Immunohistochemical analysis of paraffin-embedded human ovary cancer tissue slide using KHC3088 (ARFGEF1 IHC Kit).



Immunohistochemical analysis of paraffin-embedded mouse ovary tissue slide using KHC3088 (ARFGEF1 IHC Kit).



Immunohistochemical analysis of paraffin-embedded rat lung tissue slide using KHC3088 (ARFGEF1 IHC Kit).



Immunohistochemical analysis of paraffin-embedded rat ovary tissue slide using KHC3088 (ARFGEF1 IHC Kit).