

IHCeasy[®] CEPT1 Ready-To-Use IHC Kit

Catalog Number: **KHC3093**

General Information

Sample type:
FFPE tissue
Cited sample type:
Reactivity:
Human, Mouse, Rat
Cited Reactivity:

Assay type:
Immunohistochemistry
Primary antibody type:
Rabbit Polyclonal
Secondary antibody type:
Polymer-HRP-Goat anti-Rabbit

Kit Component

Component	Size	Concentration
Antigen Retrieval Buffer	100 mL	50×
Washing Buffer	100 mL ×2	20×
Blocking Buffer	5 mL	RTU
Primary Antibody	5 mL	RTU
Secondary Antibody	5 mL	RTU
Chromogen Component A	0.2 mL	RTU
Chromogen Component B	4 mL	RTU
Signal Enhancer	5 mL	RTU
Counter Staining Reagent	5 mL	RTU
Mounting Media	5 mL	RTU
Control Slide	1 slide (Optional)	FFPE
Datasheet	1 Copy	
Manual	1 Copy	

Storage Instructions

All the reagents are stored at 2-8°C. The kit is stable for 6 months from the date of receipt.

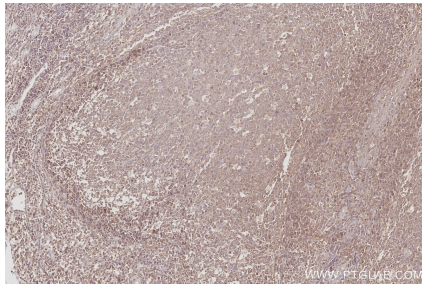
Background

Choline-ethanolamine phosphotransferase 1 (CEPT1) is a 47-kDa membrane-bound protein that catalyzes the terminal step of the Kennedy pathway. CEPT1 is encoded by the Cept1 gene and is responsible for phosphatidylcholine (PC) and phosphatidylethanolamine (PE) production.

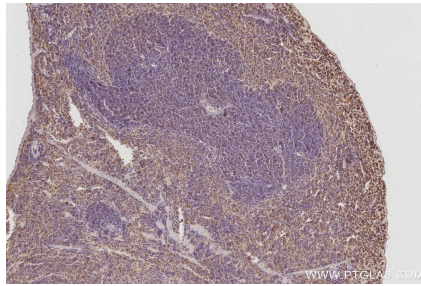
Synonyms

1-alkenyl-2-acylglycerol choline phosphotransferase, choline/ethanolamine phosphotransferase 1, EC:2.7.8.1, EC:2.7.8.22, hCEPT1

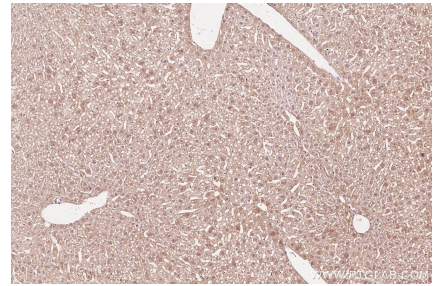
Selected Validation Data



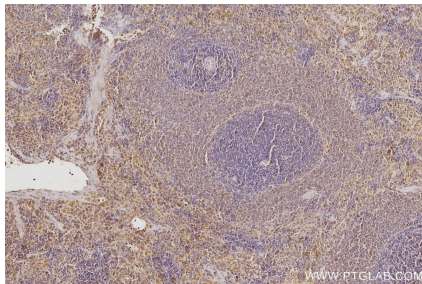
Immunohistochemical analysis of paraffin-embedded human tonsillitis tissue slide using KHC3093 (CEPT1 IHC Kit).



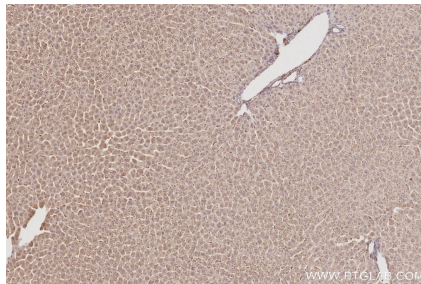
Immunohistochemical analysis of paraffin-embedded mouse spleen tissue slide using KHC3093 (CEPT1 IHC Kit).



Immunohistochemical analysis of paraffin-embedded mouse liver tissue slide using KHC3093 (CEPT1 IHC Kit).



Immunohistochemical analysis of paraffin-embedded rat spleen tissue slide using KHC3093 (CEPT1 IHC Kit).



Immunohistochemical analysis of paraffin-embedded rat liver tissue slide using KHC3093 (CEPT1 IHC Kit).