

IHCeasy[®] USH1C Ready-To-Use IHC Kit

Catalog Number: **KHC3095**

General Information

Sample type:
FFPE tissue

Cited sample type:

Reactivity:
Human, Mouse, Rat

Cited Reactivity:

Assay type:
Immunohistochemistry

Primary antibody type:
Rabbit Polyclonal

Secondary antibody type:
Polymer-HRP-Goat anti-Rabbit

Kit Component

Component	Size	Concentration
Antigen Retrieval Buffer	100 mL	50×
Washing Buffer	100 mL ×2	20×
Blocking Buffer	5 mL	RTU
Primary Antibody	5 mL	RTU
Secondary Antibody	5 mL	RTU
Chromogen Component A	0.2 mL	RTU
Chromogen Component B	4 mL	RTU
Signal Enhancer	5 mL	RTU
Counter Staining Reagent	5 mL	RTU
Mounting Media	5 mL	RTU
Control Slide	1 slide (Optional)	FFPE
Datasheet	1 Copy	
Manual	1 Copy	

Storage Instructions

All the reagents are stored at 2-8°C. The kit is stable for 6 months from the date of receipt.

Background

Harmonin, also known as USH1C, is a scaffold protein which interacts with other USH1 proteins (USH1B/myosin VIIa and USH1G/sans) to form complex and is implicated in proper development, morphogenesis, and structural integrity of the hair cell mechanoreceptor. Mutations of Harmonin cause Usher syndrome type 1 (congenital deafness and balance disorder, and early-onset sight loss).

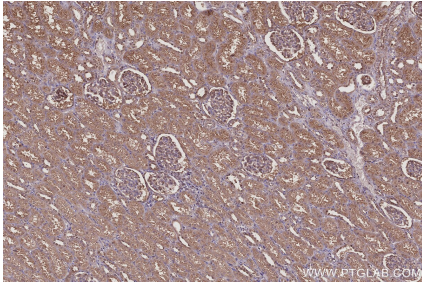
Synonyms

Harmonin, AIE75, AIE-75, Antigen NY-CO-38/NY-CO-37, Autoimmune enteropathy-related antigen AIE-75

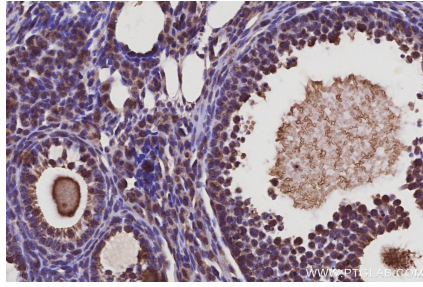
For technical support and original validation data for this product please contact:
T: 1 (888) 4PTGLAB (1-888-478-4522) (toll free in USA), or 1(312) 455-8498 (outside USA)
E: proteintech@ptglab.com
W: ptglab.com

This product is exclusively available under Proteintech Group brand and is not available to purchase from any other manufacturer.

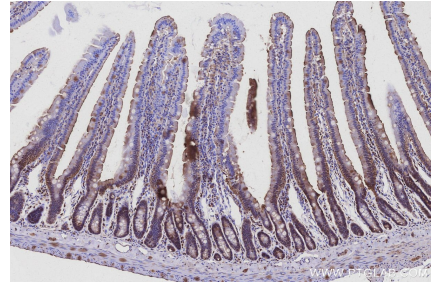
Selected Validation Data



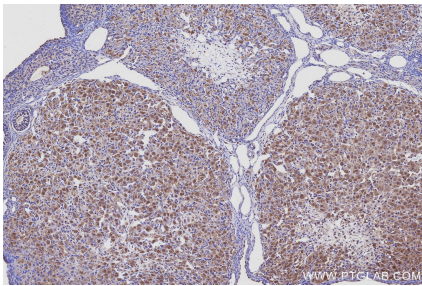
Immunohistochemical analysis of paraffin-embedded human kidney tissue slide using KHC3095 (USH1C IHC Kit).



Immunohistochemical analysis of paraffin-embedded mouse ovary tissue slide using KHC3095 (USH1C IHC Kit).



Immunohistochemical analysis of paraffin-embedded rat small intestine tissue slide using KHC3095 (USH1C IHC Kit).



Immunohistochemical analysis of paraffin-embedded rat ovary tissue slide using KHC3095 (USH1C IHC Kit).