

# IHCeasy<sup>®</sup> SAC3D1 Ready-To-Use IHC Kit

Catalog Number: **KHC3097**

## General Information

Sample type:  
FFPE tissue  
Cited sample type:  
Reactivity:  
Human  
Cited Reactivity:

Assay type:  
Immunohistochemistry  
Primary antibody type:  
Rabbit Polyclonal  
Secondary antibody type:  
Polymer-HRP-Goat anti-Rabbit

## Kit Component

Component	Size	Concentration
Antigen Retrieval Buffer	100 mL	50×
Washing Buffer	100 mL ×2	20×
Blocking Buffer	5 mL	RTU
Primary Antibody	5 mL	RTU
Secondary Antibody	5 mL	RTU
Chromogen Component A	0.2 mL	RTU
Chromogen Component B	4 mL	RTU
Signal Enhancer	5 mL	RTU
Counter Staining Reagent	5 mL	RTU
Mounting Media	5 mL	RTU
Control Slide	1 slide (Optional)	FFPE
Datasheet	1 Copy	
Manual	1 Copy	

## Storage Instructions

All the reagents are stored at 2-8°C. The kit is stable for 6 months from the date of receipt.

## Background

SAC3D1, also named as SHD1 and HSU79266. SAC3D1 is widely found in the cytoplasm, cytoskeleton, microtubule, tissue center, centrosome and spindle, involved in centrosome duplication and mitotic progression. SAC3D1 is abnormally expressed in multiple types of cancer, such as colon cancer and hepatocellular carcinoma and gastric cancer. SAC3D1 may serve as a prognostic biomarker in hepatocellular carcinoma.

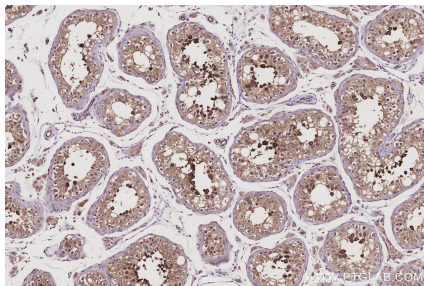
## Synonyms

SAC3 domain containing 1, SHD1

For technical support and original validation data for this product please contact:  
T: 1 (888) 4PTGLAB (1-888-478-4522) (toll free in USA), or 1(312) 455-8498 (outside USA)  
E: [proteintech@ptglab.com](mailto:proteintech@ptglab.com)  
W: [ptglab.com](http://ptglab.com)

This product is exclusively available under Proteintech Group brand and is not available to purchase from any other manufacturer.

## Selected Validation Data



Immunohistochemical analysis of paraffin-embedded human testis tissue slide using KHC3097 (SAC3D1 IHC Kit).