

IHCeasy[®] CWF19L1 Ready-To-Use IHC Kit

Catalog Number: **KHC3103**

General Information

Sample type:
FFPE tissue
Cited sample type:
Reactivity:
Human, Mouse, Rat
Cited Reactivity:

Assay type:
Immunohistochemistry
Primary antibody type:
Rabbit Polyclonal
Secondary antibody type:
Polymer-HRP-Goat anti-Rabbit

Kit Component

Component	Size	Concentration
Antigen Retrieval Buffer	100 mL	50×
Washing Buffer	100 mL ×2	20×
Blocking Buffer	5 mL	RTU
Primary Antibody	5 mL	RTU
Secondary Antibody	5 mL	RTU
Chromogen Component A	0.2 mL	RTU
Chromogen Component B	4 mL	RTU
Signal Enhancer	5 mL	RTU
Counter Staining Reagent	5 mL	RTU
Mounting Media	5 mL	RTU
Control Slide	1 slide (Optional)	FFPE
Datasheet	1 Copy	
Manual	1 Copy	

Storage Instructions

All the reagents are stored at 2-8°C. The kit is stable for 6 months from the date of receipt.

Background

CWF19L1 belongs to the CWF19 family. CWF19L1 includes a metallophosphatase (MMP) domain, a histidine triad motif (HIT) domain, and a C-terminal Cwf-J-C domain. CWF19L1 is believed to be involved in cell cycle control, endosomal trafficking, and mRNA processing. CWF19L1 is a rare cause of autosomal recessive cerebellar ataxias (ARCA). CWF19L1 is expressed in many brain regions, including cerebellum, thalamus and occipital, parietal and temporal lobes. CWF19L1 is also expressed in the spinal cord.

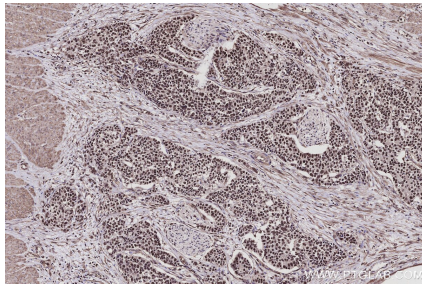
Synonyms

C19L1, hDrn1, SCAR17

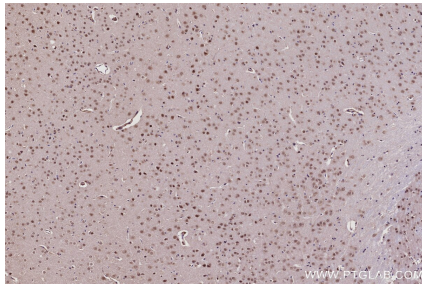
For technical support and original validation data for this product please contact:
T: 1 (888) 4PTGLAB (1-888-478-4522) (toll free in USA), or 1(312) 455-8498 (outside USA)
E: proteintech@ptglab.com
W: ptglab.com

This product is exclusively available under Proteintech Group brand and is not available to purchase from any other manufacturer.

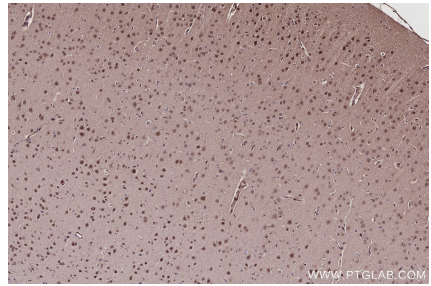
Selected Validation Data



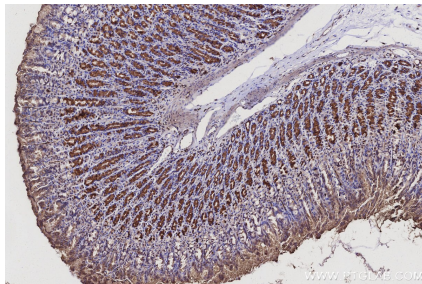
Immunohistochemical analysis of paraffin-embedded human stomach cancer tissue slide using KHC3103 (CWF19L1 IHC Kit).



Immunohistochemical analysis of paraffin-embedded mouse brain tissue slide using KHC3103 (CWF19L1 IHC Kit).



Immunohistochemical analysis of paraffin-embedded rat brain tissue slide using KHC3103 (CWF19L1 IHC Kit).



Immunohistochemical analysis of paraffin-embedded rat stomach tissue slide using KHC3103 (CWF19L1 IHC Kit).